

Mouse Stk25 Antibody (C-term)
Affinity Purified Rabbit Polyclonal Antibody (Pab)
Catalog # AP14468b

Specification

Mouse Stk25 Antibody (C-term) - Product Information

Application	WB,E
Primary Accession	O9Z2W1
Reactivity	Human
Host	Rabbit
Clonality	Polyclonal
Isotype	Rabbit IgG
Calculated MW	48158
Antigen Region	327-355

Mouse Stk25 Antibody (C-term) - Additional Information

Gene ID 59041

Other Names

Serine/threonine-protein kinase 25, Ste20-like kinase, Sterile 20/oxidant stress-response kinase 1, SOK-1, Ste20/oxidant stress response kinase 1, Stk25, Sok1

Target/Specificity

This Mouse Stk25 antibody is generated from rabbits immunized with a KLH conjugated synthetic peptide between 327-355 amino acids from the C-terminal region of mouse Stk25.

Dilution

WB~~1:1000

Format

Purified polyclonal antibody supplied in PBS with 0.09% (W/V) sodium azide. This antibody is purified through a protein A column, followed by peptide affinity purification.

Storage

Maintain refrigerated at 2-8°C for up to 2 weeks. For long term storage store at -20°C in small aliquots to prevent freeze-thaw cycles.

Precautions

Mouse Stk25 Antibody (C-term) is for research use only and not for use in diagnostic or therapeutic procedures.

Mouse Stk25 Antibody (C-term) - Protein Information

Name Stk25

Synonyms Sok1

Function Oxidant stress-activated serine/threonine kinase that may play a role in the response to environmental stress. Targets to the Golgi apparatus where it appears to regulate protein transport events, cell adhesion, and polarity complexes important for cell migration (By similarity).

Cellular Location

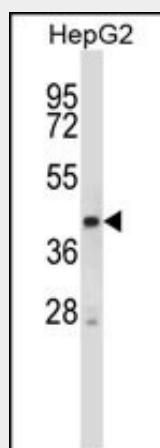
Cytoplasm. Golgi apparatus. Note=Localizes to the Golgi apparatus.

Mouse Stk25 Antibody (C-term) - Protocols

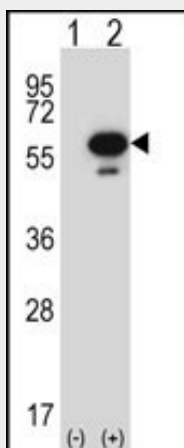
Provided below are standard protocols that you may find useful for product applications.

- [Western Blot](#)
- [Blocking Peptides](#)
- [Dot Blot](#)
- [Immunohistochemistry](#)
- [Immunofluorescence](#)
- [Immunoprecipitation](#)
- [Flow Cytometry](#)
- [Cell Culture](#)

Mouse Stk25 Antibody (C-term) - Images



Mouse Stk25 Antibody (C-term) (Cat. #AP14468b) western blot analysis in HepG2 cell line lysates (35ug/lane). This demonstrates the Stk25 antibody detected the Stk25 protein (arrow).



Western blot analysis of Stk25 (arrow) using rabbit polyclonal Mouse Stk25 Antibody (C-term) (Cat. #AP14468b). 293 cell lysates (2 ug/lane) either nontransfected (Lane 1) or transiently transfected (Lane 2) with the Stk25 gene.

Mouse Stk25 Antibody (C-term) - Background

Oxidant stress-activated serine/threonine kinase that may play a role in the response to environmental stress. Targets to the Golgi apparatus where it appears to regulate protein transport events, cell adhesion, and polarity complexes important for cell migration (By similarity).