

Mouse Tie1 Antibody (Center)
Affinity Purified Rabbit Polyclonal Antibody (Pab)
Catalog # AP14471c

Specification

Mouse Tie1 Antibody (Center) - Product Information

Application	WB,E
Primary Accession	Q06806
Reactivity	Human, Mouse
Host	Rabbit
Clonality	Polyclonal
Isotype	Rabbit IgG
Calculated MW	124583
Antigen Region	361-389

Mouse Tie1 Antibody (Center) - Additional Information

Gene ID 21846

Other Names

Tyrosine-protein kinase receptor Tie-1, Tie1, Tie, Tie-1

Target/Specificity

This Mouse Tie1 antibody is generated from rabbits immunized with a KLH conjugated synthetic peptide between 361-389 amino acids from the Central region of mouse Tie1.

Dilution

WB~~1:1000

Format

Purified polyclonal antibody supplied in PBS with 0.09% (W/V) sodium azide. This antibody is purified through a protein A column, followed by peptide affinity purification.

Storage

Maintain refrigerated at 2-8°C for up to 2 weeks. For long term storage store at -20°C in small aliquots to prevent freeze-thaw cycles.

Precautions

Mouse Tie1 Antibody (Center) is for research use only and not for use in diagnostic or therapeutic procedures.

Mouse Tie1 Antibody (Center) - Protein Information

Name Tie1

Synonyms Tie, Tie-1

Function Transmembrane tyrosine-protein kinase that may modulate TEK/TIE2 activity and

contribute to the regulation of angiogenesis.

Cellular Location

Cell membrane; Single-pass type I membrane protein

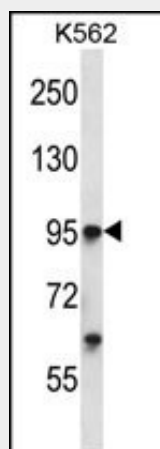
Tissue Location

Specifically expressed in developing vascular endothelial cells. Abundantly expressed in lung and heart, moderately in brain, liver and kidney, and weakly in thymus, spleen and testis

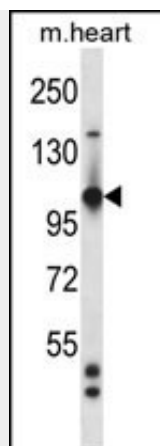
Mouse Tie1 Antibody (Center) - Protocols

Provided below are standard protocols that you may find useful for product applications.

- [Western Blot](#)
- [Blocking Peptides](#)
- [Dot Blot](#)
- [Immunohistochemistry](#)
- [Immunofluorescence](#)
- [Immunoprecipitation](#)
- [Flow Cytometry](#)
- [Cell Culture](#)

Mouse Tie1 Antibody (Center) - Images

Mouse Tie1 Antibody (Center) (Cat. #AP14471c) western blot analysis in K562 cell line lysates (35ug/lane). This demonstrates the Tie1 antibody detected the Tie1 protein (arrow).



Mouse Tie1 Antibody (Center) (Cat. #AP14471c) western blot analysis in mouse heart tissue lysates (35ug/lane). This demonstrates the Tie1 antibody detected the Tie1 protein (arrow).

Mouse Tie1 Antibody (Center) - Background

Probable protein tyrosine-kinase transmembrane receptor.