

**PERP Antibody (C-term)**  
**Affinity Purified Rabbit Polyclonal Antibody (Pab)**  
**Catalog # AP14508b**

**Specification**

---

**PERP Antibody (C-term) - Product Information**

Application	WB, IHC-P,E
Primary Accession	<a href="#">Q96FX8</a>
Other Accession	<a href="#">NP_071404.2</a>
Reactivity	Human
Host	Rabbit
Clonality	Polyclonal
Isotype	Rabbit IgG
Calculated MW	21386
Antigen Region	162-191

**PERP Antibody (C-term) - Additional Information**

**Gene ID** 64065

**Other Names**

p53 apoptosis effector related to PMP-22, Keratinocyte-associated protein 1, KCP-1, P53-induced protein PIGPC1, Transmembrane protein THW, PERP, KCP1, KRTCAP1, PIGPC1, THW

**Target/Specificity**

This PERP antibody is generated from rabbits immunized with a KLH conjugated synthetic peptide between 162-191 amino acids from the C-terminal region of human PERP.

**Dilution**

WB~~1:1000

IHC-P~~1:10~50

**Format**

Purified polyclonal antibody supplied in PBS with 0.09% (W/V) sodium azide. This antibody is purified through a protein A column, followed by peptide affinity purification.

**Storage**

Maintain refrigerated at 2-8°C for up to 2 weeks. For long term storage store at -20°C in small aliquots to prevent freeze-thaw cycles.

**Precautions**

PERP Antibody (C-term) is for research use only and not for use in diagnostic or therapeutic procedures.

**PERP Antibody (C-term) - Protein Information**

**Name** PERP

**Function** Component of intercellular desmosome junctions. Plays a role in stratified epithelial integrity and cell-cell adhesion by promoting desmosome assembly.

**Cellular Location**

Cell junction, desmosome {ECO:0000250|UniProtKB:Q9JK95}. Cell membrane; Multi-pass membrane protein. Note=Associated with desmosomes (By similarity). Colocalizes with KRT14 in the cell membrane (PubMed:31898316). {ECO:0000250|UniProtKB:Q9JK95, ECO:0000269|PubMed:31898316}

**Tissue Location**

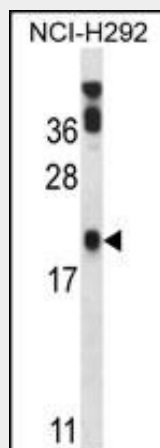
Expressed in skin, heart, placental, liver, pancreas, keratinocytes and dermal fibroblasts

**PERP Antibody (C-term) - Protocols**

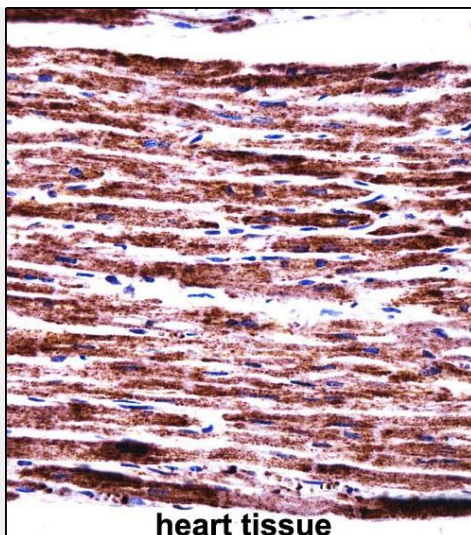
Provided below are standard protocols that you may find useful for product applications.

- [Western Blot](#)
- [Blocking Peptides](#)
- [Dot Blot](#)
- [Immunohistochemistry](#)
- [Immunofluorescence](#)
- [Immunoprecipitation](#)
- [Flow Cytometry](#)
- [Cell Culture](#)

**PERP Antibody (C-term) - Images**



PERP Antibody (C-term) (Cat. #AP14508b) western blot analysis in NCI-H292 cell line lysates (35ug/lane). This demonstrates the PERP antibody detected the PERP protein (arrow).



heart tissue

PERP Antibody (C-term) (AP14508b) immunohistochemistry analysis in formalin fixed and paraffin embedded human heart tissue followed by peroxidase conjugation of the secondary antibody and DAB staining. This data demonstrates the use of PERP Antibody (C-term) for immunohistochemistry. Clinical relevance has not been evaluated.

#### **PERP Antibody (C-term) - Background**

Component of intercellular desmosome junctions. Plays a role in stratified epithelial integrity and cell-cell adhesion by promoting desmosome assembly. Plays a role as an effector in the TP53-dependent apoptotic pathway (By similarity).

#### **PERP Antibody (C-term) - References**

Bailey, S.D., et al. Diabetes Care 33(10):2250-2253(2010)  
Liu, C.Y., et al. Carcinogenesis 31(7):1259-1263(2010)  
Yarden, R.I., et al. Mol. Carcinog. 49(6):545-555(2010)  
Talmud, P.J., et al. Am. J. Hum. Genet. 85(5):628-642(2009)  
Beaudry, V.G., et al. Am. J. Med. Genet. A 149A (9), 1952-1957 (2009) :