

**PPT2 Antibody (Center)**  
**Affinity Purified Rabbit Polyclonal Antibody (Pab)**  
**Catalog # AP14515c**

## Specification

---

### PPT2 Antibody (Center) - Product Information

Application	WB, IHC-P,E
Primary Accession	<a href="#">O9UMR5</a>
Other Accession	<a href="#">NP_005146.3</a> , <a href="#">NP_619731.1</a>
Reactivity	Human
Host	Rabbit
Clonality	Polyclonal
Isotype	Rabbit IgG
Calculated MW	34225
Antigen Region	183-212

### PPT2 Antibody (Center) - Additional Information

**Gene ID** 9374

#### Other Names

Lysosomal thioesterase PPT2, PPT-2, 312-, S-thioesterase G14, PPT2

#### Target/Specificity

This PPT2 antibody is generated from rabbits immunized with a KLH conjugated synthetic peptide between 183-212 amino acids from the Central region of human PPT2.

#### Dilution

WB~~1:1000

IHC-P~~1:10~50

#### Format

Purified polyclonal antibody supplied in PBS with 0.09% (W/V) sodium azide. This antibody is purified through a protein A column, followed by peptide affinity purification.

#### Storage

Maintain refrigerated at 2-8°C for up to 2 weeks. For long term storage store at -20°C in small aliquots to prevent freeze-thaw cycles.

#### Precautions

PPT2 Antibody (Center) is for research use only and not for use in diagnostic or therapeutic procedures.

### PPT2 Antibody (Center) - Protein Information

**Name** PPT2

**Function** Removes thioester-linked fatty acyl groups from various substrates including

S-palmitoyl-CoA. Has the highest S-thioesterase activity for the acyl groups palmitic and myristic acid followed by other short- and long-chain acyl substrates. However, because of structural constraints, is unable to remove palmitate from peptides or proteins.

**Cellular Location**

Lysosome.

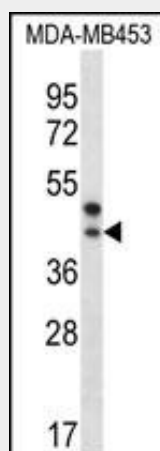
**Tissue Location**

Broadly expressed, with highest levels in skeletal muscle.

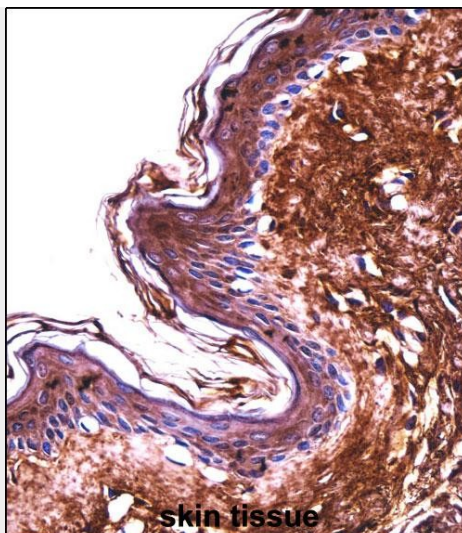
**PPT2 Antibody (Center) - Protocols**

Provided below are standard protocols that you may find useful for product applications.

- [Western Blot](#)
- [Blocking Peptides](#)
- [Dot Blot](#)
- [Immunohistochemistry](#)
- [Immunofluorescence](#)
- [Immunoprecipitation](#)
- [Flow Cytometry](#)
- [Cell Culture](#)

**PPT2 Antibody (Center) - Images**

PPT2 Antibody (Center) (Cat. #AP14515c) western blot analysis in MDA-MB453 cell line lysates (35ug/lane). This demonstrates the PPT2 antibody detected the PPT2 protein (arrow).



PPT2 Antibody (Center) (AP14515c) immunohistochemistry analysis in formalin fixed and paraffin embedded human skin tissue followed by peroxidase conjugation of the secondary antibody and DAB staining. This data demonstrates the use of PPT2 Antibody (Center) for immunohistochemistry. Clinical relevance has not been evaluated.

#### **PPT2 Antibody (Center) - Background**

This gene encodes a member of the palmitoyl-protein thioesterase family. The encoded glycosylated lysosomal protein has palmitoyl-CoA hydrolase activity in vitro, but does not hydrolyze palmitate from cysteine residues in proteins. Three transcript variants encoding different isoforms have been described for this gene, with one of the isoforms being inactive. [provided by RefSeq].

#### **PPT2 Antibody (Center) - References**

Hancock, D.B., et al. Nat. Genet. 42(1):45-52(2010)  
Barcellos, L.F., et al. PLoS Genet. 5 (10), E1000696 (2009) :  
McKinnon, E., et al. Diabetes Obes Metab 11 SUPPL 1, 92-100 (2009) :  
Lamesch, P., et al. Genomics 89(3):307-315(2007)  
Sleat, D.E., et al. Mol. Cell Proteomics 5(4):686-701(2006)