

OSM Antibody (C-term)
Affinity Purified Rabbit Polyclonal Antibody (Pab)
Catalog # AP14525b

Specification

OSM Antibody (C-term) - Product Information

Application	WB,E
Primary Accession	P13725
Other Accession	NP_065391.1
Reactivity	Human
Host	Rabbit
Clonality	Polyclonal
Isotype	Rabbit IgG
Antigen Region	214-243

OSM Antibody (C-term) - Additional Information

Gene ID 5008

Other Names

Oncostatin-M, OSM, OSM

Target/Specificity

This OSM antibody is generated from rabbits immunized with a KLH conjugated synthetic peptide between 214-243 amino acids from the C-terminal region of human OSM.

Dilution

WB~~1:1000

Format

Purified polyclonal antibody supplied in PBS with 0.09% (W/V) sodium azide. This antibody is purified through a protein A column, followed by peptide affinity purification.

Storage

Maintain refrigerated at 2-8°C for up to 2 weeks. For long term storage store at -20°C in small aliquots to prevent freeze-thaw cycles.

Precautions

OSM Antibody (C-term) is for research use only and not for use in diagnostic or therapeutic procedures.

OSM Antibody (C-term) - Protein Information

Name OSM

Function Growth regulator. Inhibits the proliferation of a number of tumor cell lines. Stimulates proliferation of AIDS-KS cells. It regulates cytokine production, including IL-6, G-CSF and GM-CSF from endothelial cells. Uses both type I OSM receptor (heterodimers composed of LIFR and IL6ST)

and type II OSM receptor (heterodimers composed of OSMR and IL6ST). Involved in the maturation of fetal hepatocytes, thereby promoting liver development and regeneration (By similarity).

Cellular Location

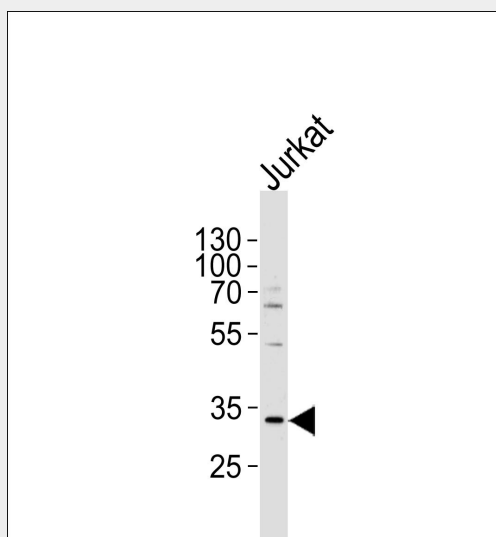
Secreted.

OSM Antibody (C-term) - Protocols

Provided below are standard protocols that you may find useful for product applications.

- [Western Blot](#)
- [Blocking Peptides](#)
- [Dot Blot](#)
- [Immunohistochemistry](#)
- [Immunofluorescence](#)
- [Immunoprecipitation](#)
- [Flow Cytometry](#)
- [Cell Culture](#)

OSM Antibody (C-term) - Images



Western blot analysis of lysate from Jurkat cell line, using OSM Antibody (C-term)(Cat. #AP14525b). AP14525b was diluted at 1:1000 at each lane. A goat anti-rabbit IgG H&L(HRP) at 1:5000 dilution was used as the secondary antibody. Lysate at 35ug per lane.

OSM Antibody (C-term) - Background

Oncostatin M is a member of a cytokine family that includes leukemia-inhibitory factor, granulocyte colony-stimulating factor, and interleukin 6. This gene encodes a growth regulator which inhibits the proliferation of a number of tumor cell lines. It regulates cytokine production, including IL-6, G-CSF and GM-CSF from endothelial cells.

OSM Antibody (C-term) - References

Bailey, S.D., et al. Diabetes Care 33(10):2250-2253(2010)

Thorat Manojkumar, S., et al. Cytokine 50(3):248-252(2010)
Pradeep, A.R., et al. Biomarkers 15(3):277-282(2010)
Davila, S., et al. Genes Immun. 11(3):232-238(2010)
Lee, G., et al. J. Obstet. Gynaecol. Res. 35(5):869-875(2009)