

SLC15A1 Antibody (C-term)
Affinity Purified Rabbit Polyclonal Antibody (Pab)
Catalog # AP14536b

Specification

SLC15A1 Antibody (C-term) - Product Information

Application	WB,E
Primary Accession	P46059
Other Accession	NP_005064.1
Reactivity	Human
Host	Rabbit
Clonality	Polyclonal
Isotype	Rabbit IgG
Antigen Region	663-692

SLC15A1 Antibody (C-term) - Additional Information

Gene ID 6564

Other Names

Solute carrier family 15 member 1, Intestinal H(+)/peptide cotransporter, Oligopeptide transporter, small intestine isoform, Peptide transporter 1, SLC15A1, PEPT1

Target/Specificity

This SLC15A1 antibody is generated from rabbits immunized with a KLH conjugated synthetic peptide between 663-692 amino acids from the C-terminal region of human SLC15A1.

Dilution

WB~~1:1000

Format

Purified polyclonal antibody supplied in PBS with 0.09% (W/V) sodium azide. This antibody is purified through a protein A column, followed by peptide affinity purification.

Storage

Maintain refrigerated at 2-8°C for up to 2 weeks. For long term storage store at -20°C in small aliquots to prevent freeze-thaw cycles.

Precautions

SLC15A1 Antibody (C-term) is for research use only and not for use in diagnostic or therapeutic procedures.

SLC15A1 Antibody (C-term) - Protein Information

Name SLC15A1 ([HGNC:10920](#))

Function Electrogenic proton-coupled amino-acid transporter that transports oligopeptides of 2 to 4 amino acids with a preference for dipeptides. Transports neutral and monovalently charged

peptides with a proton to peptide stoichiometry of 1:1 or 2:1 (PubMed:[7896779](#), PubMed:[9835627](#), PubMed:[8914574](#), PubMed:[15521010](#), PubMed:[18367661](#), PubMed:[19685173](#), PubMed:[26320580](#)) (By similarity). Primarily responsible for the absorption of dietary di- and tripeptides from the small intestinal lumen (By similarity). Mediates transepithelial transport of muramyl and N-formylated bacterial dipeptides contributing to recognition of pathogenic bacteria by the mucosal immune system (PubMed:[9835627](#), PubMed:[15521010](#)).

Cellular Location

Apical cell membrane; Multi-pass membrane protein. Note=Localized to the apical membrane of enterocytes

Tissue Location

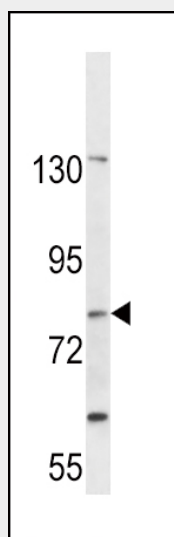
Expressed in small intestine.

SLC15A1 Antibody (C-term) - Protocols

Provided below are standard protocols that you may find useful for product applications.

- [Western Blot](#)
- [Blocking Peptides](#)
- [Dot Blot](#)
- [Immunohistochemistry](#)
- [Immunofluorescence](#)
- [Immunoprecipitation](#)
- [Flow Cytometry](#)
- [Cell Culture](#)

SLC15A1 Antibody (C-term) - Images



SLC15A1 Antibody (C-term) (Cat. #AP14536b) western blot analysis in CEM cell line lysates (35ug/lane). This demonstrates the SLC15A1 antibody detected the SLC15A1 protein (arrow).

SLC15A1 Antibody (C-term) - Background

This gene encodes an intestinal hydrogen peptide cotransporter that is a member of the solute carrier family 15. The encoded protein is localized to the brush border membrane of the

intestinal epithelium and mediates the uptake of di- and tripeptides from the lumen into the enterocytes. This protein plays an important role in the uptake and digestion of dietary proteins. This protein also facilitates the absorption of numerous peptidomimetic drugs.

SLC15A1 Antibody (C-term) - References

Dalmasso, G., et al. Am. J. Physiol. Gastrointest. Liver Physiol. 299 (3), G687-G696 (2010) :
Pieri, M., et al. Am. J. Physiol. Gastrointest. Liver Physiol. 299 (1), G136-G143 (2010) :
Rose, J.E., et al. Mol. Med. 16 (7-8), 247-253 (2010) :
Geissler, S., et al. J. Agric. Food Chem. 58(4):2543-2547(2010)
Yokoyama, K., et al. Nephron Clin Pract 115 (4), C237-C243 (2010) :