

**PSMD9 Antibody (C-term)**  
**Affinity Purified Rabbit Polyclonal Antibody (Pab)**  
**Catalog # AP14537B**

**Specification**

---

**PSMD9 Antibody (C-term) - Product Information**

Application	WB,E
Primary Accession	<a href="#">O00233</a>
Other Accession	<a href="#">NP_002804.2</a>
Reactivity	Human
Host	Rabbit
Clonality	Polyclonal
Isotype	Rabbit IgG
Calculated MW	24682
Antigen Region	176-205

**PSMD9 Antibody (C-term) - Additional Information**

**Gene ID** 5715

**Other Names**

26S proteasome non-ATPase regulatory subunit 9, 26S proteasome regulatory subunit p27, PSMD9

**Target/Specificity**

This PSMD9 antibody is generated from rabbits immunized with a KLH conjugated synthetic peptide between 176-205 amino acids from the C-terminal region of human PSMD9.

**Dilution**

WB~~1:1000

**Format**

Purified polyclonal antibody supplied in PBS with 0.09% (W/V) sodium azide. This antibody is purified through a protein A column, followed by peptide affinity purification.

**Storage**

Maintain refrigerated at 2-8°C for up to 2 weeks. For long term storage store at -20°C in small aliquots to prevent freeze-thaw cycles.

**Precautions**

PSMD9 Antibody (C-term) is for research use only and not for use in diagnostic or therapeutic procedures.

**PSMD9 Antibody (C-term) - Protein Information**

**Name** PSMD9

**Function** Acts as a chaperone during the assembly of the 26S proteasome, specifically of the base subcomplex of the PA700/19S regulatory complex (RC). During the base subcomplex assembly is

part of an intermediate PSMD9:PSMC6:PSMC3 module, also known as modulator trimer complex; PSMD9 is released during the further base assembly process.

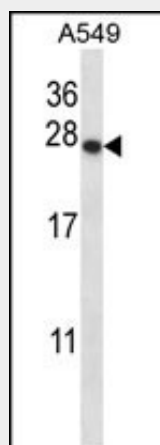
**Tissue Location**

Expressed in all tissues tested, highly expressed in liver and kidney

**PSMD9 Antibody (C-term) - Protocols**

Provided below are standard protocols that you may find useful for product applications.

- [Western Blot](#)
- [Blocking Peptides](#)
- [Dot Blot](#)
- [Immunohistochemistry](#)
- [Immunofluorescence](#)
- [Immunoprecipitation](#)
- [Flow Cytometry](#)
- [Cell Culture](#)

**PSMD9 Antibody (C-term) - Images**

PSMD9 Antibody (C-term) (Cat. #AP14537b) western blot analysis in A549 cell line lysates (35ug/lane). This demonstrates the PSMD9 antibody detected the PSMD9 protein (arrow).

**PSMD9 Antibody (C-term) - Background**

The 26S proteasome is a multicatalytic proteinase complex with a highly ordered structure composed of 2 complexes, a 20S core and a 19S regulator. The 20S core is composed of 4 rings of 28 non-identical subunits; 2 rings are composed of 7 alpha subunits and 2 rings are composed of 7 beta subunits. The 19S regulator is composed of a base, which contains 6 ATPase subunits and 2 non-ATPase subunits, and a lid, which contains up to 10 non-ATPase subunits. Proteasomes are distributed throughout eukaryotic cells at a high concentration and cleave peptides in an ATP/ubiquitin-dependent process in a non-lysosomal pathway. An essential function of a modified proteasome, the immunoproteasome, is the processing of class I MHC peptides. This gene encodes a non-ATPase subunit of the 19S regulator.

**PSMD9 Antibody (C-term) - References**

Gragnoli, C. J. Cell. Physiol. 223(1):1-5(2010)  
Huang, L.W., et al. Pathol. Oncol. Res. 16(1):81-86(2010)  
Gragnoli, C. J. Cell. Physiol. 222(2):265-267(2010)  
Kaneko, T., et al. Cell 137(5):914-925(2009)  
Kim, J., et al. Clin. Cancer Res. 15(1):81-90(2009)