

Mouse Adck2 Antibody (Center)
Affinity Purified Rabbit Polyclonal Antibody (Pab)
Catalog # AP14608c**Specification**

Mouse Adck2 Antibody (Center) - Product Information

Application	WB,E
Primary Accession	O6NSR3
Other Accession	NP_849204.1
Reactivity	Mouse
Host	Rabbit
Clonality	Polyclonal
Isotype	Rabbit IgG
Calculated MW	68677
Antigen Region	232-259

Mouse Adck2 Antibody (Center) - Additional Information**Gene ID** 57869**Other Names**

Uncharacterized aarF domain-containing protein kinase 2, 2711-, Adck2

Target/Specificity

This Mouse Adck2 antibody is generated from rabbits immunized with a KLH conjugated synthetic peptide between 232-259 amino acids from the Central region of mouse Adck2.

Dilution

WB~~1:1000

Format

Purified polyclonal antibody supplied in PBS with 0.09% (W/V) sodium azide. This antibody is purified through a protein A column, followed by peptide affinity purification.

Storage

Maintain refrigerated at 2-8°C for up to 2 weeks. For long term storage store at -20°C in small aliquots to prevent freeze-thaw cycles.

Precautions

Mouse Adck2 Antibody (Center) is for research use only and not for use in diagnostic or therapeutic procedures.

Mouse Adck2 Antibody (Center) - Protein Information**Name** Adck2

Function The function of this protein is not yet clear. It is not known if it has protein kinase activity and what type of substrate it would phosphorylate (Ser, Thr or Tyr) (Probable). Involved in

the mitochondrial import of CoQ precursors, plays a role in muscle mitochondrial function and fatty acid beta-oxidation (PubMed:[31480808](#), PubMed:[35936917](#)).

Cellular Location

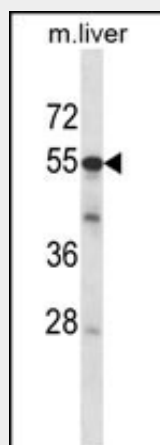
Mitochondrion. Membrane; Single-pass membrane protein

Mouse Adck2 Antibody (Center) - Protocols

Provided below are standard protocols that you may find useful for product applications.

- [Western Blot](#)
- [Blocking Peptides](#)
- [Dot Blot](#)
- [Immunohistochemistry](#)
- [Immunofluorescence](#)
- [Immunoprecipitation](#)
- [Flow Cytometry](#)
- [Cell Culture](#)

Mouse Adck2 Antibody (Center) - Images



Mouse Adck2 Antibody (Center) (Cat. #AP14608c) western blot analysis in mouse liver tissue lysates (35ug/lane). This demonstrates the Adck2 antibody detected the Adck2 protein (arrow).

Mouse Adck2 Antibody (Center) - Background

The function of this protein is not yet clear. It is not known if it has protein kinase activity and what type of substrate it would phosphorylate (Ser, Thr or Tyr).

Mouse Adck2 Antibody (Center) - References

Pagliarini, D.J., et al. Cell 134(1):112-123(2008)
Zambrowicz, B.P., et al. Proc. Natl. Acad. Sci. U.S.A. 100(24):14109-14114(2003)