

Mouse Sgk223 Antibody (N-term)
Affinity Purified Rabbit Polyclonal Antibody (Pab)
Catalog # AP14635a**Specification**

Mouse Sgk223 Antibody (N-term) - Product Information

Application	WB,E
Primary Accession	Q57114
Other Accession	NP_766499.2
Reactivity	Mouse
Host	Rabbit
Clonality	Polyclonal
Isotype	Rabbit IgG
Calculated MW	147945
Antigen Region	195-224

Mouse Sgk223 Antibody (N-term) - Additional Information**Gene ID** 244418**Other Names**

Tyrosine-protein kinase SgK223, Sugen kinase 223, Sgk223, D8Ertd82e

Target/Specificity

This Mouse Sgk223 antibody is generated from rabbits immunized with a KLH conjugated synthetic peptide between 195-224 amino acids from the N-terminal region of mouse Sgk223.

Dilution

WB~~1:1000

Format

Purified polyclonal antibody supplied in PBS with 0.09% (W/V) sodium azide. This antibody is purified through a protein A column, followed by peptide affinity purification.

Storage

Maintain refrigerated at 2-8°C for up to 2 weeks. For long term storage store at -20°C in small aliquots to prevent freeze-thaw cycles.

Precautions

Mouse Sgk223 Antibody (N-term) is for research use only and not for use in diagnostic or therapeutic procedures.

Mouse Sgk223 Antibody (N-term) - Protein Information**Name** Prag1 {ECO:0000312|MGI:MGI:1196223}

Function Catalytically inactive protein kinase that acts as a scaffold protein (By similarity). Functions as an effector of the small GTPase RND2, which stimulates RhoA activity and inhibits

NGF-induced neurite outgrowth (By similarity). Promotes Src family kinase (SFK) signaling by regulating the subcellular localization of CSK, a negative regulator of these kinases, leading to the regulation of cell morphology and motility by a CSK-dependent mechanism (By similarity). Acts as a critical coactivator of Notch signaling (PubMed:[25038227](#)).

Cellular Location

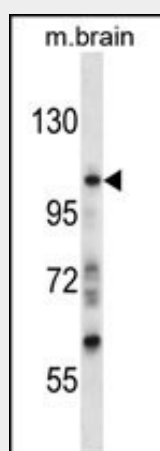
Cytoplasm {ECO:0000250|UniProtKB:D3ZMK9}. Nucleus. Cell junction, focal adhesion {ECO:0000250|UniProtKB:Q86YV5}. Note=Colocalized with NOTCH1 in the nucleus (PubMed:25038227)

Mouse Sgk223 Antibody (N-term) - Protocols

Provided below are standard protocols that you may find useful for product applications.

- [Western Blot](#)
- [Blocking Peptides](#)
- [Dot Blot](#)
- [Immunohistochemistry](#)
- [Immunofluorescence](#)
- [Immunoprecipitation](#)
- [Flow Cytometry](#)
- [Cell Culture](#)

Mouse Sgk223 Antibody (N-term) - Images



Mouse Sgk223 Antibody (N-term) (Cat. #AP14635a) western blot analysis in mouse brain tissue lysates (35ug/lane). This demonstrates the Sgk223 antibody detected the Sgk223 protein (arrow).

Mouse Sgk223 Antibody (N-term) - Background

PRAGMIN is also known as SGK223 (sugen kinase 223). The rat homolog was originally identified in a yeast two-hybrid screen for Rnd2 effector proteins expressed in neural cells. Rat Pragmin was found to stimulate RhoA activity for the regulation of neurite outgrowth.

Mouse Sgk223 Antibody (N-term) - References

Tanaka, H., et al. J. Biol. Chem. 281(15):10355-10364(2006)