

**Mouse Mapk8 Antibody (Center)**  
**Affinity Purified Rabbit Polyclonal Antibody (Pab)**  
**Catalog # AP14650c**

**Specification**

---

**Mouse Mapk8 Antibody (Center) - Product Information**

Application	WB,E
Primary Accession	<a href="#">O91Y86</a> and <a href="#">P45983</a>
Other Accession	<a href="#">Q8QHK8</a> , <a href="#">P49185</a> , <a href="#">NP_057909.1</a> , <a href="#">P45983</a> , <a href="#">O91Y86</a>
Reactivity	Human
Predicted	Mouse, Rat, Xenopus
Host	Rabbit
Clonality	Polyclonal
Isotype	Rabbit IgG
Antigen Region	239-268

**Mouse Mapk8 Antibody (Center) - Additional Information**

**Other Names**

Mitogen-activated protein kinase 8, MAP kinase 8, MAPK 8, Stress-activated protein kinase JNK1, c-Jun N-terminal kinase 1, Mapk8, Jnk1, Prkm8

**Target/Specificity**

This Mouse Mapk8 antibody is generated from rabbits immunized with a KLH conjugated synthetic peptide between 239-268 amino acids from the Central region of mouse Mapk8.

**Dilution**

WB~~1:1000

**Format**

Purified polyclonal antibody supplied in PBS with 0.09% (W/V) sodium azide. This antibody is purified through a protein A column, followed by peptide affinity purification.

**Storage**

Maintain refrigerated at 2-8°C for up to 2 weeks. For long term storage store at -20°C in small aliquots to prevent freeze-thaw cycles.

**Precautions**

Mouse Mapk8 Antibody (Center) is for research use only and not for use in diagnostic or therapeutic procedures.

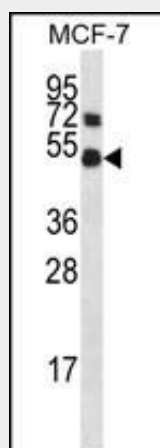
**Mouse Mapk8 Antibody (Center) - Protein Information**

**Mouse Mapk8 Antibody (Center) - Protocols**

Provided below are standard protocols that you may find useful for product applications.

- [Western Blot](#)
- [Blocking Peptides](#)
- [Dot Blot](#)
- [Immunohistochemistry](#)
- [Immunofluorescence](#)
- [Immunoprecipitation](#)
- [Flow Cytometry](#)
- [Cell Culture](#)

#### Mouse Mapk8 Antibody (Center) - Images



Mouse Mapk8 Antibody (Center) (Cat. #AP14650c) western blot analysis in MCF-7 cell line lysates (35ug/lane). This demonstrates the Mapk8 antibody detected the Mapk8 protein (arrow).

#### Mouse Mapk8 Antibody (Center) - Background

Mapk8 responds to activation by environmental stress and pro-inflammatory cytokines by phosphorylating a number of transcription factors, primarily components of AP-1 such as JUN, JDP2 and ATF2 and thus regulates AP-1 transcriptional activity. In T-cells, JNK1 and JNK2 are required for polarized differentiation of T-helper cells into Th1 cells. Phosphorylates heat shock factor protein 4 (HSF4) (By similarity).

#### Mouse Mapk8 Antibody (Center) - References

Sherrin, T., et al. J. Neurosci. 30(40):13348-13361(2010)  
Morel, C., et al. Mol. Cell. Biol. 30(19):4616-4625(2010)  
Gao, D., et al. J. Biol. Chem. 285(39):29965-29973(2010)  
Han, J.S., et al. Anticancer Res. 30(9):3407-3412(2010)  
Cellurale, C., et al. PLoS ONE 5 (8), E12469 (2010) :