

**Latexin Antibody (Center)**  
**Affinity Purified Rabbit Polyclonal Antibody (Pab)**  
**Catalog # AP1467c**

**Specification**

---

**Latexin Antibody (Center) - Product Information**

Application	WB, IHC-P, FC,E
Primary Accession	<a href="#">Q9BS40</a>
Reactivity	Human
Host	Rabbit
Clonality	Polyclonal
Isotype	Rabbit IgG
Calculated MW	25750
Antigen Region	78-107

**Latexin Antibody (Center) - Additional Information**

**Gene ID** 56925

**Other Names**

Latexin, Endogenous carboxypeptidase inhibitor, ECI, Protein MUM, Tissue carboxypeptidase inhibitor, TCI, LXN

**Target/Specificity**

This Latexin antibody is generated from rabbits immunized with a KLH conjugated synthetic peptide between 78-107 amino acids from the Central region of human Latexin.

**Dilution**

WB~~1:1000  
IHC-P~~1:10~50  
FC~~1:10~50

**Format**

Purified polyclonal antibody supplied in PBS with 0.09% (W/V) sodium azide. This antibody is purified through a protein A column, followed by peptide affinity purification.

**Storage**

Maintain refrigerated at 2-8°C for up to 2 weeks. For long term storage store at -20°C in small aliquots to prevent freeze-thaw cycles.

**Precautions**

Latexin Antibody (Center) is for research use only and not for use in diagnostic or therapeutic procedures.

**Latexin Antibody (Center) - Protein Information**

**Name** LXN

**Function** Hardly reversible, non-competitive, and potent inhibitor of CPA1, CPA2 and CPA4. May play a role in inflammation.

**Cellular Location**

Cytoplasm.

**Tissue Location**

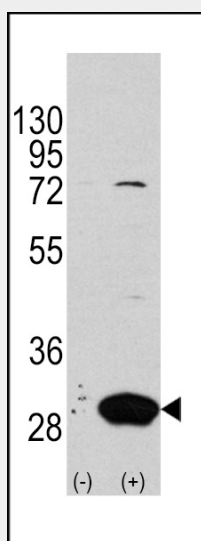
Highly expressed in heart, prostate, ovary, kidney, pancreas, and colon, moderate or low in other tissues including brain

**Latexin Antibody (Center) - Protocols**

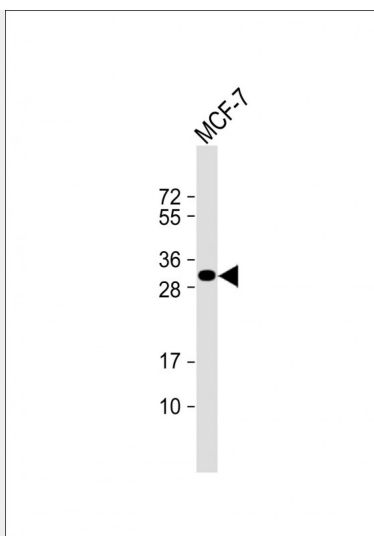
Provided below are standard protocols that you may find useful for product applications.

- [Western Blot](#)
- [Blocking Peptides](#)
- [Dot Blot](#)
- [Immunohistochemistry](#)
- [Immunofluorescence](#)
- [Immunoprecipitation](#)
- [Flow Cytometry](#)
- [Cell Culture](#)

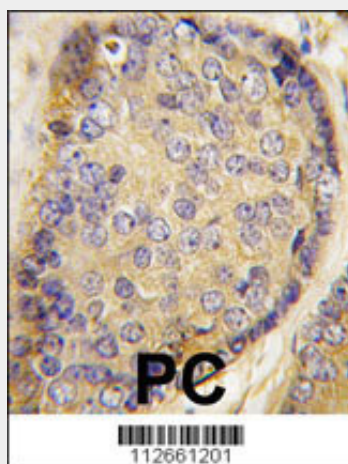
**Latexin Antibody (Center) - Images**



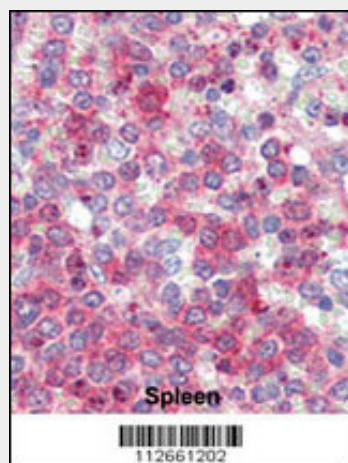
Western blot analysis of Latexin (arrow) using rabbit polyclonal Latexin Antibody (Center) (RB12661). 293 cell lysates (2 ug/lane) either nontransfected (Lane 1) or transiently transfected with the LXN gene (Lane 2) (Origene Technologies).



Anti-Latexin Antibody (Center) at 1:1000 dilution + MCF-7 whole cell lysate Lysates/proteins at 20  $\mu$ g per lane. Secondary Goat Anti-Rabbit IgG, (H+L), Peroxidase conjugated at 1/10000 dilution. Predicted band size : 26 kDa Blocking/Dilution buffer: 5% NFDM/TBST.

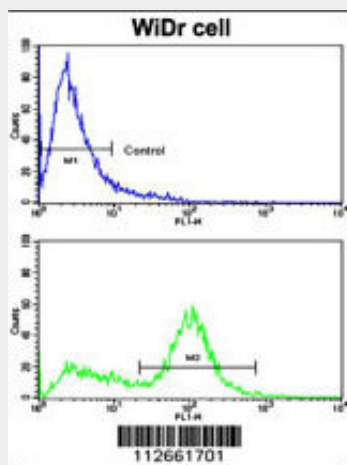


Formalin-fixed and paraffin-embedded human prostata carcinoma tissue reacted with Latexin antibody (Center) (Cat.#AP1467c), which was peroxidase-conjugated to the secondary antibody, followed by DAB staining. This data demonstrates the use of this antibody for immunohistochemistry; clinical relevance has not been evaluated.



Formalin-fixed and paraffin-embedded human Spleen tissue reacted with Latexin antibody

(Center) (Cat.#AP1467c), which was peroxidase-conjugated to the secondary antibody, followed by AEC staining. This data demonstrates the use of this antibody for immunohistochemistry; clinical relevance has not been evaluated.



Flow cytometric analysis of WiDr cells using Latexin Antibody (Center)(bottom histogram) compared to a negative control cell (top histogram). FITC-conjugated goat-anti-rabbit secondary antibodies were used for the analysis.

#### **Latexin Antibody (Center) - Background**

Latexin possesses nearly irreversible, non-competitive and potent inhibition of zinc-dependent metallopeptidases CPA1, CPA2, and CPA4. It is expressed in a neuronal subset in the cerebral cortex and cells in other neural and non-neural tissues of rat. Latexin plays a role in regional specification and/or morphogenesis of the forebrain.

#### **Latexin Antibody (Center) - References**

Pallares,I., Proc. Natl. Acad. Sci. U.S.A. 102 (11), 3978-3983 (2005)