

**PAX7 Antibody (Center)**  
**Affinity Purified Rabbit Polyclonal Antibody (Pab)**  
**Catalog # AP14692c**

**Specification**

---

**PAX7 Antibody (Center) - Product Information**

Application	WB, IHC-P,E
Primary Accession	<a href="#">P23759</a>
Other Accession	<a href="#">P47239</a> , <a href="#">NP_001128726.1</a> , <a href="#">NP_039236.1</a>
Reactivity	Human
Predicted	Mouse
Host	Rabbit
Clonality	Polyclonal
Isotype	Rabbit IgG
Calculated MW	55119
Antigen Region	181-210

**PAX7 Antibody (Center) - Additional Information**

**Gene ID** 5081

**Other Names**

Paired box protein Pax-7, HuP1, PAX7, HUP1

**Target/Specificity**

This PAX7 antibody is generated from rabbits immunized with a KLH conjugated synthetic peptide between 181-210 amino acids from the Central region of human PAX7.

**Dilution**

WB~~1:1000

IHC-P~~1:10~50

**Format**

Purified polyclonal antibody supplied in PBS with 0.09% (W/V) sodium azide. This antibody is purified through a protein A column, followed by peptide affinity purification.

**Storage**

Maintain refrigerated at 2-8°C for up to 2 weeks. For long term storage store at -20°C in small aliquots to prevent freeze-thaw cycles.

**Precautions**

PAX7 Antibody (Center) is for research use only and not for use in diagnostic or therapeutic procedures.

**PAX7 Antibody (Center) - Protein Information**

**Name** PAX7

**Synonyms** HUP1

**Function** Transcription factor that is involved in the regulation of muscle stem cells proliferation, playing a role in myogenesis and muscle regeneration.

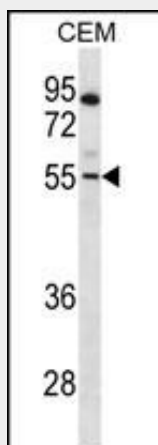
**Cellular Location**

Nucleus {ECO:0000250|UniProtKB:P47239}.

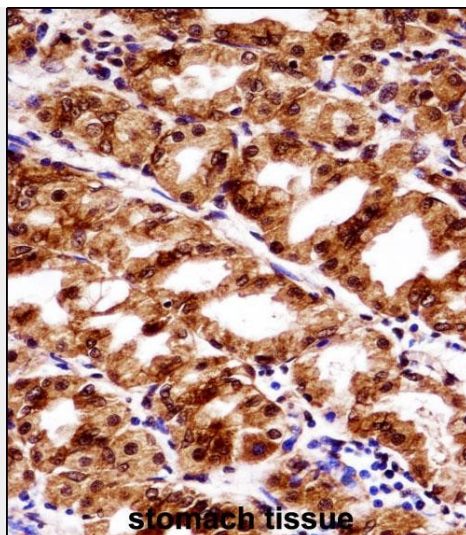
**PAX7 Antibody (Center) - Protocols**

Provided below are standard protocols that you may find useful for product applications.

- [Western Blot](#)
- [Blocking Peptides](#)
- [Dot Blot](#)
- [Immunohistochemistry](#)
- [Immunofluorescence](#)
- [Immunoprecipitation](#)
- [Flow Cytometry](#)
- [Cell Culture](#)

**PAX7 Antibody (Center) - Images**

PAX7 Antibody (Center) (Cat. #AP14692c) western blot analysis in CEM cell line lysates (35ug/lane). This demonstrates the PAX7 antibody detected the PAX7 protein (arrow).



PAX7 Antibody (Center) (AP14692c) immunohistochemistry analysis in formalin fixed and paraffin embedded human stomach tissue followed by peroxidase conjugation of the secondary antibody and DAB staining. This data demonstrates the use of PAX7 Antibody (Center) for immunohistochemistry. Clinical relevance has not been evaluated.

#### **PAX7 Antibody (Center) - Background**

This gene is a member of the paired box (PAX) family of transcription factors. Members of this gene family typically contain a paired box domain, an octapeptide, and a paired-type homeodomain. These genes play critical roles during fetal development and cancer growth. The specific function of the paired box 7 gene is unknown but speculated to involve tumor suppression since fusion of this gene with a forkhead domain family member has been associated with alveolar rhabdomyosarcoma. Three transcript variants encoding different isoforms have been found for this gene.

#### **PAX7 Antibody (Center) - References**

Shimada, M., et al. Hum. Genet. 128(4):433-441(2010)  
Williamson, D., et al. J. Clin. Oncol. 28(13):2151-2158(2010)  
Xynos, A., et al. Stem Cells 28(5):965-973(2010)  
Edwards, T.L., et al. Ann. Hum. Genet. 74(2):97-109(2010)  
Yerges, L.M., et al. J. Bone Miner. Res. 24(12):2039-2049(2009)