

Mouse Gucy2f Antibody (Center)
Affinity Purified Rabbit Polyclonal Antibody (Pab)
Catalog # AP14715C**Specification**

Mouse Gucy2f Antibody (Center) - Product Information

Application	WB,E
Primary Accession	Q5SDA5
Other Accession	NP_001007577.1
Reactivity	Mouse
Host	Rabbit
Clonality	Polyclonal
Isotype	Rabbit IgG
Calculated MW	124425
Antigen Region	317-344

Mouse Gucy2f Antibody (Center) - Additional Information**Gene ID** 245650**Other Names**

Retinal guanylyl cyclase 2, Gucy2f

Target/Specificity

This Mouse Gucy2f antibody is generated from rabbits immunized with a KLH conjugated synthetic peptide between 317-344 amino acids from the Central region of mouse Gucy2f.

Dilution

WB~~1:1000

Format

Purified polyclonal antibody supplied in PBS with 0.09% (W/V) sodium azide. This antibody is purified through a protein A column, followed by peptide affinity purification.

Storage

Maintain refrigerated at 2-8°C for up to 2 weeks. For long term storage store at -20°C in small aliquots to prevent freeze-thaw cycles.

Precautions

Mouse Gucy2f Antibody (Center) is for research use only and not for use in diagnostic or therapeutic procedures.

Mouse Gucy2f Antibody (Center) - Protein Information**Name** Gucy2f {ECO:0000312|MGI:MGI:105119}**Function** Responsible for the synthesis of cyclic GMP (cGMP) in rods and cones of photoreceptors (By similarity). Plays an essential role in phototransduction, by mediating cGMP replenishment.

May also participate in the trafficking of membrane-associated proteins to the photoreceptor outer segment membrane (PubMed:[17255100](#)).

Cellular Location

Membrane {ECO:0000250|UniProtKB:P51842}; Single-pass type I membrane protein.
Photoreceptor outer segment membrane; Single-pass type I membrane protein

Tissue Location

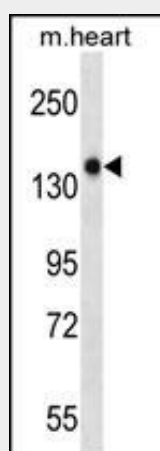
Retina..

Mouse Gucy2f Antibody (Center) - Protocols

Provided below are standard protocols that you may find useful for product applications.

- [Western Blot](#)
- [Blocking Peptides](#)
- [Dot Blot](#)
- [Immunohistochemistry](#)
- [Immunofluorescence](#)
- [Immunoprecipitation](#)
- [Flow Cytometry](#)
- [Cell Culture](#)

Mouse Gucy2f Antibody (Center) - Images



Mouse Gucy2f Antibody (Center) (Cat. #AP14715c) western blot analysis in mouse heart tissue lysates (35ug/lane). This demonstrates the Gucy2f antibody detected the Gucy2f protein (arrow).

Mouse Gucy2f Antibody (Center) - Background

Probably plays a specific functional role in the rods and/or cones of photoreceptors. It may be the enzyme involved in the resynthesis of cGMP required for recovery of the dark state after phototransduction (By similarity).

Mouse Gucy2f Antibody (Center) - References

Schmidt, H., et al. J. Cell Biol. 179(2):331-340(2007)
Baehr, W., et al. J. Biol. Chem. 282(12):8837-8847(2007)
Corbo, J.C., et al. PLoS Genet. 1 (2), E11 (2005) :
Shearstone, J.R., et al. Genomics 85(3):309-321(2005)

Yamazaki, K., et al. Genomics 51(2):303-305(1998)