

**C11orf20 Antibody (C-term)**  
**Affinity Purified Rabbit Polyclonal Antibody (Pab)**  
**Catalog # AP14718b****Specification**

---

**C11orf20 Antibody (C-term) - Product Information**

Application	WB,E
Primary Accession	<a href="#">O9NTU4</a>
Other Accession	<a href="#">NP_001034585.1</a>
Reactivity	Human
Host	Rabbit
Clonality	Polyclonal
Isotype	Rabbit IgG
Calculated MW	22839
Antigen Region	172-200

**C11orf20 Antibody (C-term) - Additional Information****Gene ID** 25858**Other Names**

Testis-expressed sequence 40 protein, TEX40, C11orf20

**Target/Specificity**

This C11orf20 antibody is generated from rabbits immunized with a KLH conjugated synthetic peptide between 172-200 amino acids from the C-terminal region of human C11orf20.

**Dilution**

WB~~1:1000

**Format**

Purified polyclonal antibody supplied in PBS with 0.09% (W/V) sodium azide. This antibody is purified through a protein A column, followed by peptide affinity purification.

**Storage**

Maintain refrigerated at 2-8°C for up to 2 weeks. For long term storage store at -20°C in small aliquots to prevent freeze-thaw cycles.

**Precautions**

C11orf20 Antibody (C-term) is for research use only and not for use in diagnostic or therapeutic procedures.

**C11orf20 Antibody (C-term) - Protein Information****Name** CATSPERZ ([HGNC:19231](#))

**Function** Auxiliary component of the CatSper complex, a complex involved in sperm cell hyperactivation. Sperm cell hyperactivation is needed for sperm motility which is essential late in

the preparation of sperm for fertilization. Required for a distribution of the CatSper complex in linear quadrilateral nanodomains along the flagellum, maximizing fertilization inside the mammalian female reproductive tract. Together with EFCAB9, associates with the CatSper channel pore and is required for the two-row structure of each single CatSper channel.

#### Cellular Location

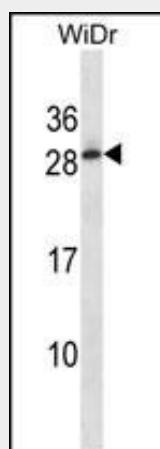
Cell projection, cilium, flagellum membrane; Peripheral membrane protein. Note=Specifically located in the principal piece of sperm tail (PubMed:28226241). Although it does not contain a transmembrane domain, localizes with the CatSper complex at the flagellum membrane (PubMed:28226241).

#### C11orf20 Antibody (C-term) - Protocols

Provided below are standard protocols that you may find useful for product applications.

- [Western Blot](#)
- [Blocking Peptides](#)
- [Dot Blot](#)
- [Immunohistochemistry](#)
- [Immunofluorescence](#)
- [Immunoprecipitation](#)
- [Flow Cytometry](#)
- [Cell Culture](#)

#### C11orf20 Antibody (C-term) - Images



C11orf20 Antibody (C-term) (Cat. #AP14718b) western blot analysis in WiDr cell line lysates (35ug/lane). This demonstrates the C11orf20 antibody detected the C11orf20 protein (arrow).

#### C11orf20 Antibody (C-term) - Background

C11orf20 may be involved in late spermatogenesis (By similarity).

#### C11orf20 Antibody (C-term) - References

Simpson, J.C., et al. EMBO Rep. 1(3):287-292(2000)