

CDH12 Antibody (C-term)
Affinity Purified Rabbit Polyclonal Antibody (Pab)
Catalog # AP1473b**Specification**

CDH12 Antibody (C-term) - Product Information

Application	WB, IHC-P,E
Primary Accession	P55289
Reactivity	Human
Host	Rabbit
Clonality	Polyclonal
Isotype	Rabbit IgG
Antigen Region	688-716

CDH12 Antibody (C-term) - Additional Information**Gene ID** 1010**Other Names**

Cadherin-12, Brain cadherin, BR-cadherin, Neural type cadherin 2, N-cadherin 2, CDH12

Target/Specificity

This CDH12 antibody is generated from rabbits immunized with a KLH conjugated synthetic peptide between 688-716 amino acids from the C-terminal region of human CDH12.

Dilution

WB~~1:1000

IHC-P~~1:10~50

Format

Purified polyclonal antibody supplied in PBS with 0.09% (W/V) sodium azide. This antibody is purified through a protein A column, followed by peptide affinity purification.

Storage

Maintain refrigerated at 2-8°C for up to 2 weeks. For long term storage store at -20°C in small aliquots to prevent freeze-thaw cycles.

Precautions

CDH12 Antibody (C-term) is for research use only and not for use in diagnostic or therapeutic procedures.

CDH12 Antibody (C-term) - Protein Information**Name** CDH12

Function Cadherins are calcium-dependent cell adhesion proteins. They preferentially interact with themselves in a homophilic manner in connecting cells; cadherins may thus contribute to the sorting of heterogeneous cell types.

Cellular Location

Cell membrane; Single-pass type I membrane protein

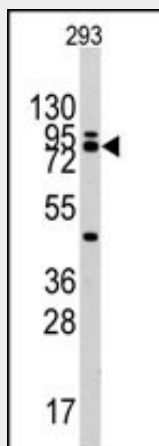
Tissue Location

Brain.

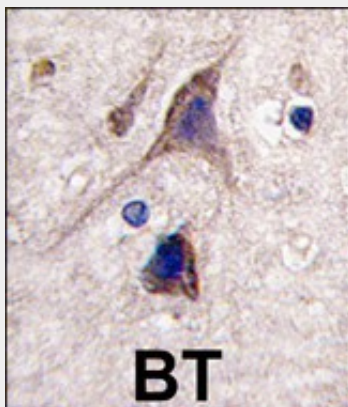
CDH12 Antibody (C-term) - Protocols

Provided below are standard protocols that you may find useful for product applications.

- [Western Blot](#)
- [Blocking Peptides](#)
- [Dot Blot](#)
- [Immunohistochemistry](#)
- [Immunofluorescence](#)
- [Immunoprecipitation](#)
- [Flow Cytometry](#)
- [Cell Culture](#)

CDH12 Antibody (C-term) - Images

Western blot analysis of CDH12 Antibody (C-term) (Cat.#AP1473b) in 293 cell line lysates (35ug/lane). CDH12 (arrow) was detected using the purified Pab.



Formalin-fixed and paraffin-embedded human brain tissue reacted with CDH12 antibody (C-term), which was peroxidase-conjugated to the secondary antibody, followed by DAB staining. This data demonstrates the use of this antibody for immunohistochemistry; clinical relevance has not been

evaluated.

CDH12 Antibody (C-term) - Background

CDH12 is a type II classical cadherin from the cadherin superfamily of integral membrane proteins that mediate calcium-dependent cell-cell adhesion. Mature cadherin proteins are composed of a large N-terminal extracellular domain, a single membrane-spanning domain, and a small, highly conserved C-terminal cytoplasmic domain. Type II (atypical) cadherins are defined based on their lack of a HAV cell adhesion recognition sequence specific to type I cadherins. This particular cadherin appears to be expressed specifically in the brain and its temporal pattern of expression would be consistent with a role during a critical period of neuronal development, perhaps specifically during synaptogenesis.

CDH12 Antibody (C-term) - References

Shimoyama,Y., Biochem. J. 349 (PT 1), 159-167 (2000)
Chalmers,I.J., Genomics 57 (1), 160-163 (1999)
Kremmidiotis,G., Genomics 49 (3), 467-471 (1998)
Selig,S., Proc. Natl. Acad. Sci. U.S.A. 94 (6), 2398-2403 (1997)