

**Alkaline Phosphatase (ALPL) Antibody (N-term)**  
**Purified Rabbit Polyclonal Antibody (Pab)**  
**Catalog # AP1474a****Specification**

---

**Alkaline Phosphatase (ALPL) Antibody (N-term) - Product Information**

Application	WB,E
Primary Accession	<a href="#">P05186</a>
Other Accession	<a href="#">P09487</a>
Reactivity	Human, Mouse
Predicted	Bovine
Host	Rabbit
Clonality	Polyclonal
Isotype	Rabbit IgG
Calculated MW	57305
Antigen Region	3-32

**Alkaline Phosphatase (ALPL) Antibody (N-term) - Additional Information****Gene ID** 249**Other Names**

Alkaline phosphatase, tissue-nonspecific isozyme, AP-TNAP, TNSALP, Alkaline phosphatase liver/bone/kidney isozyme, ALPL

**Target/Specificity**

This Alkaline Phosphatase (ALPL) antibody is generated from rabbits immunized with a KLH conjugated synthetic peptide between 3-32 amino acids from the N-terminal region of human Alkaline Phosphatase (ALPL).

**Dilution**

WB~~1:1000

**Format**

Purified polyclonal antibody supplied in PBS with 0.09% (W/V) sodium azide. This antibody is prepared by Saturated Ammonium Sulfate (SAS) precipitation followed by dialysis against PBS.

**Storage**

Maintain refrigerated at 2-8°C for up to 2 weeks. For long term storage store at -20°C in small aliquots to prevent freeze-thaw cycles.

**Precautions**

Alkaline Phosphatase (ALPL) Antibody (N-term) is for research use only and not for use in diagnostic or therapeutic procedures.

**Alkaline Phosphatase (ALPL) Antibody (N-term) - Protein Information****Name** ALPL {ECO:0000303|PubMed:8406453, ECO:0000312|HGNC:HGNC:438}

**Function** Alkaline phosphatase that metabolizes various phosphate compounds and plays a key role in skeletal mineralization and adaptive thermogenesis (PubMed:[12162492](#), PubMed:[23688511](#), PubMed:[25982064](#)). Has broad substrate specificity and can hydrolyze a considerable variety of compounds; however, only a few substrates, such as diphosphate (inorganic pyrophosphate; PPI), pyridoxal 5'-phosphate (PLP) and N-phosphocreatine are natural substrates (PubMed:[12162492](#), PubMed:[2220817](#)). Plays an essential role in skeletal and dental mineralization via its ability to hydrolyze extracellular diphosphate, a potent mineralization inhibitor, to phosphate: it thereby promotes hydroxyapatite crystal formation and increases inorganic phosphate concentration (PubMed:[23688511](#), PubMed:[25982064](#)). Acts in a non-redundant manner with PHOSPHO1 in skeletal mineralization: while PHOSPHO1 mediates the initiation of hydroxyapatite crystallization in the matrix vesicles (MVs), ALPL/TNAP catalyzes the spread of hydroxyapatite crystallization in the extracellular matrix (By similarity). Also promotes dephosphorylation of osteopontin (SSP1), an inhibitor of hydroxyapatite crystallization in its phosphorylated state; it is however unclear whether ALPL/TNAP mediates SSP1 dephosphorylation via a direct or indirect manner (By similarity). Catalyzes dephosphorylation of PLP to pyridoxal (PL), the transportable form of vitamin B6, in order to provide a sufficient amount of PLP in the brain, an essential cofactor for enzymes catalyzing the synthesis of diverse neurotransmitters (PubMed:[2220817](#), PubMed:[20049532](#)). Additionally, also able to mediate ATP degradation in a stepwise manner to adenosine, thereby regulating the availability of ligands for purinergic receptors (By similarity). Also capable of dephosphorylating microbial products, such as lipopolysaccharides (LPS) as well as other phosphorylated small-molecules, such as poly-inosine:cytosine (poly I:C) (PubMed:[28448526](#)). Acts as a key regulator of adaptive thermogenesis as part of the futile creatine cycle: localizes to the mitochondria of thermogenic fat cells and acts by mediating hydrolysis of N-phosphocreatine to initiate a futile cycle of creatine dephosphorylation and phosphorylation (By similarity). During the futile creatine cycle, creatine and N-phosphocreatine are in a futile cycle, which dissipates the high energy charge of N-phosphocreatine as heat without performing any mechanical or chemical work (By similarity).

#### Cellular Location

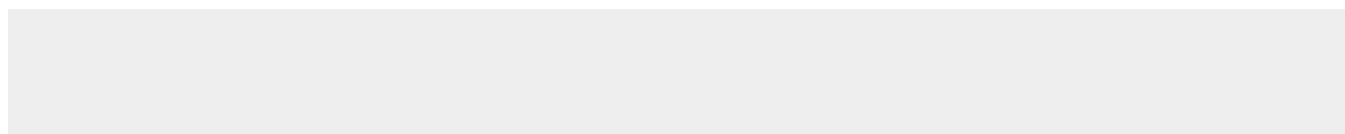
Cell membrane; Lipid-anchor, GPI-anchor Extracellular vesicle membrane {ECO:0000250|UniProtKB:P09242}; Lipid- anchor, GPI-anchor {ECO:0000250|UniProtKB:P09242}. Mitochondrion membrane {ECO:0000250|UniProtKB:P09242}; Lipid-anchor, GPI-anchor {ECO:0000250|UniProtKB:P09242}. Mitochondrion intermembrane space {ECO:0000250|UniProtKB:P09242}. Note=Localizes to special class of extracellular vesicles, named matrix vesicles (MVs), which are released by osteogenic cells. Localizes to the mitochondria of thermogenic fat cells: tethered to mitochondrial membranes via a GPI-anchor and probably resides in the mitochondrion intermembrane space {ECO:0000250|UniProtKB:P09242}

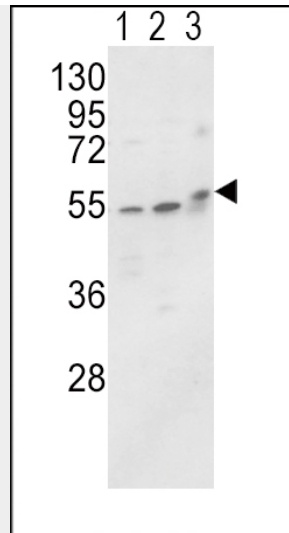
#### Alkaline Phosphatase (ALPL) Antibody (N-term) - Protocols

Provided below are standard protocols that you may find useful for product applications.

- [Western Blot](#)
- [Blocking Peptides](#)
- [Dot Blot](#)
- [Immunohistochemistry](#)
- [Immunofluorescence](#)
- [Immunoprecipitation](#)
- [Flow Cytometry](#)
- [Cell Culture](#)

#### Alkaline Phosphatase (ALPL) Antibody (N-term) - Images





Western blot analysis of ALPL Antibody (N-term) (Cat. #AP1474a) in MCF-7(lane 1),HL-60 cell line(lane 2) and mouse brain tissue(lane 3) lysates (35ug/lane). ALPL (arrow) was detected using the purified Pab.

#### **Alkaline Phosphatase (ALPL) Antibody (N-term) - Background**

There are at least four distinct but related alkaline phosphatases: intestinal, placental, placental-like, and liver/bone/kidney (tissue non-specific). The genes for the first three are located together on chromosome 2 while the tissue non-specific form is located on chromosome 1. This protein is a membrane bound glycosylated enzyme that is not expressed in any particular tissue and is, therefore, referred to as the tissue-nonspecific form of the enzyme. The exact physiological function of the alkaline phosphatases is not known. A proposed function of this form of the enzyme is matrix mineralization, however, mice that lack a functional form of this enzyme show normal skeletal development. This enzyme has been linked directly to a disorder known as hypophosphatasia, a disorder that is characterized by hypercalcemia and includes skeletal defects. The character of this disorder can vary, however, depending on the specific mutation since this determines age of onset and severity of symptoms.

#### **Alkaline Phosphatase (ALPL) Antibody (N-term) - References**

Panuccio,V., Am. J. Kidney Dis. 50 (6), 1001-1008 (2007)  
Brun-Heath,I., Eur J Med Genet 50 (5), 367-378 (2007)  
So,P.P., J. Rheumatol. 34 (6), 1313-1322 (2007)