

**SULT1A3 Antibody (Center)**  
**Affinity Purified Rabbit Polyclonal Antibody (Pab)**  
**Catalog # AP14760c**

**Specification**

---

**SULT1A3 Antibody (Center) - Product Information**

Application	WB, IHC-P,E
Primary Accession	<a href="#">P50224</a>
Other Accession	<a href="#">P0DMN0</a> , <a href="#">P0DMM9</a> , <a href="#">NP_003157.1</a> , <a href="#">NP_808220.1</a>
Reactivity	Human
Host	Rabbit
Clonality	Polyclonal
Isotype	Rabbit IgG
Antigen Region	67-95

**SULT1A3 Antibody (Center) - Additional Information**

**Other Names**

SULT1A3; STM; Sulfotransferase 1A3/1A4; Aryl sulfotransferase 1A3/1A4; Catecholamine-sulfating phenol sulfotransferase; HAST3; M-PST; Monoamine-sulfating phenol sulfotransferase; Placental estrogen sulfotransferase; Sulfotransferase, monoamine-preferring; Thermolabile phenol sulfotransferase

**Target/Specificity**

This SULT1A3 antibody is generated from rabbits immunized with a KLH conjugated synthetic peptide between 67-95 amino acids from the Central region of human SULT1A3.

**Dilution**

WB~~1:1000  
IHC-P~~1:10~50

**Format**

Purified polyclonal antibody supplied in PBS with 0.09% (W/V) sodium azide. This antibody is purified through a protein A column, followed by peptide affinity purification.

**Storage**

Maintain refrigerated at 2-8°C for up to 2 weeks. For long term storage store at -20°C in small aliquots to prevent freeze-thaw cycles.

**Precautions**

SULT1A3 Antibody (Center) is for research use only and not for use in diagnostic or therapeutic procedures.

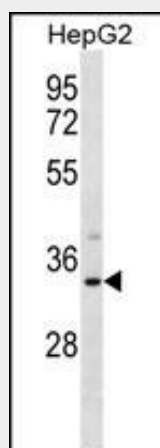
**SULT1A3 Antibody (Center) - Protein Information**

**SULT1A3 Antibody (Center) - Protocols**

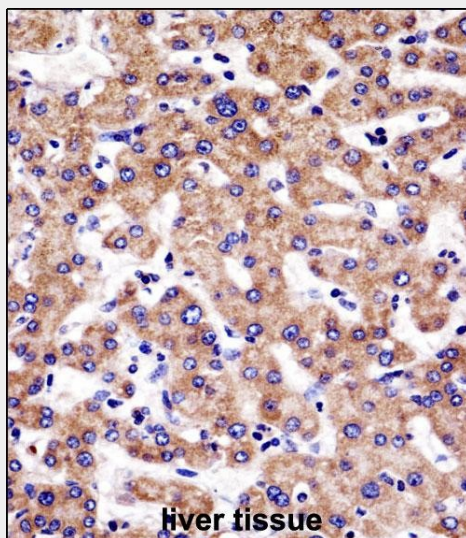
Provided below are standard protocols that you may find useful for product applications.

- [Western Blot](#)
- [Blocking Peptides](#)
- [Dot Blot](#)
- [Immunohistochemistry](#)
- [Immunofluorescence](#)
- [Immunoprecipitation](#)
- [Flow Cytometry](#)
- [Cell Culture](#)

#### **SULT1A3 Antibody (Center) - Images**



SULT1A3 Antibody (Center) (Cat. #AP14760c) western blot analysis in HepG2 cell line lysates (35ug/lane). This demonstrates the SULT1A3 antibody detected the SULT1A3 protein (arrow).



SULT1A3 Antibody (Center) (AP14760c) immunohistochemistry analysis in formalin fixed and paraffin embedded human liver tissue followed by peroxidase conjugation of the secondary antibody and DAB staining. This data demonstrates the use of SULT1A3 Antibody (Center) for immunohistochemistry. Clinical relevance has not been evaluated.

#### **SULT1A3 Antibody (Center) - Background**

Sulfotransferase enzymes catalyze the sulfate conjugation of many hormones, neurotransmitters, drugs, and xenobiotic

compounds. These cytosolic enzymes are different in their tissue distributions and substrate specificities. The gene structure (number and length of exons) is similar among family members. This gene encodes a phenol sulfotransferase with thermolabile enzyme activity. Four sulfotransferase genes are located on the p arm of chromosome 16; this gene and SULT1A4 arose from a segmental duplication. This gene is the most centromeric of the four sulfotransferase genes. Read-through transcription exists between this gene and the upstream SLX1A (SLX1 structure-specific endonuclease subunit homolog A) gene that encodes a protein containing GIY-YIG domains.

#### **SULT1A3 Antibody (Center) - References**

Mitra, P., et al. Biochem. Pharmacol. 78(12):1475-1482(2009)  
Riches, Z., et al. Drug Metab. Dispos. 37(11):2255-2261(2009)  
Yasuda, S., et al. Neurosci. Res. 64(3):273-279(2009)  
Salman, E.D., et al. Drug Metab. Dispos. 37(4):706-709(2009)  
Miksits, M., et al. J. Pharm. Pharmacol. 61(2):185-191(2009)