

Mouse Csnk1a1 Antibody (C-term)
Affinity Purified Rabbit Polyclonal Antibody (Pab)
Catalog # AP14783B

Specification

Mouse Csnk1a1 Antibody (C-term) - Product Information

Application	WB, FC,E
Primary Accession	Q8BK63
Other Accession	P39951 , P11440
Reactivity	Human, Mouse
Predicted	Rat
Host	Rabbit
Clonality	Polyclonal
Isotype	Rabbit IgG
Antigen Region	309-337

Mouse Csnk1a1 Antibody (C-term) - Additional Information

Other Names

Casein kinase I isoform alpha, CKI-alpha, CK1, Csnk1a1

Target/Specificity

This Mouse Csnk1a1 antibody is generated from rabbits immunized with a KLH conjugated synthetic peptide between 309-337 amino acids from the C-terminal region of mouse Csnk1a1.

Dilution

WB~~1:1000
FC~~1:10~50

Format

Purified polyclonal antibody supplied in PBS with 0.09% (W/V) sodium azide. This antibody is purified through a protein A column, followed by peptide affinity purification.

Storage

Maintain refrigerated at 2-8°C for up to 2 weeks. For long term storage store at -20°C in small aliquots to prevent freeze-thaw cycles.

Precautions

Mouse Csnk1a1 Antibody (C-term) is for research use only and not for use in diagnostic or therapeutic procedures.

Mouse Csnk1a1 Antibody (C-term) - Protein Information

Name Csnk1a1

Function Casein kinases are operationally defined by their preferential utilization of acidic proteins such as caseins as substrates (By similarity). Can phosphorylate a large number of proteins (By similarity). Participates in Wnt signaling (By similarity). Phosphorylates CTNNB1 at

'Ser-45' (By similarity). May phosphorylate PER1 and PER2 (PubMed:[21930935](#)). May play a role in segregating chromosomes during mitosis (By similarity). May play a role in keratin cytoskeleton disassembly and thereby, it may regulate epithelial cell migration (By similarity). Acts as a positive regulator of mTORC1 and mTORC2 signaling in response to nutrients by mediating phosphorylation of DEPTOR inhibitor (By similarity). Acts as an inhibitor of NLRP3 inflammasome assembly by mediating phosphorylation of NLRP3 (PubMed:[34615873](#)).

Cellular Location

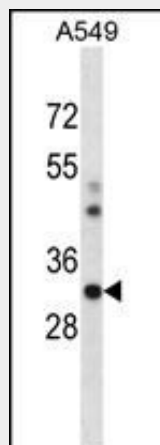
Cytoplasm {ECO:0000250|UniProtKB:P48729}. Cytoplasm, cytoskeleton, microtubule organizing center, centrosome {ECO:0000250|UniProtKB:P48729}. Chromosome, centromere, kinetochore {ECO:0000250|UniProtKB:P48729}. Nucleus speckle {ECO:0000250|UniProtKB:P48729}. Cytoplasm, cytoskeleton, cilium basal body. Cytoplasm, cytoskeleton, spindle. Note=Localizes to the centrosome in interphase cells, and to kinetochore fibers during mitosis. Also recruited to the keratin cytoskeleton. {ECO:0000250|UniProtKB:P48729}

Mouse Csnk1a1 Antibody (C-term) - Protocols

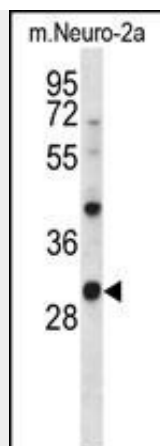
Provided below are standard protocols that you may find useful for product applications.

- [Western Blot](#)
- [Blocking Peptides](#)
- [Dot Blot](#)
- [Immunohistochemistry](#)
- [Immunofluorescence](#)
- [Immunoprecipitation](#)
- [Flow Cytometry](#)
- [Cell Culture](#)

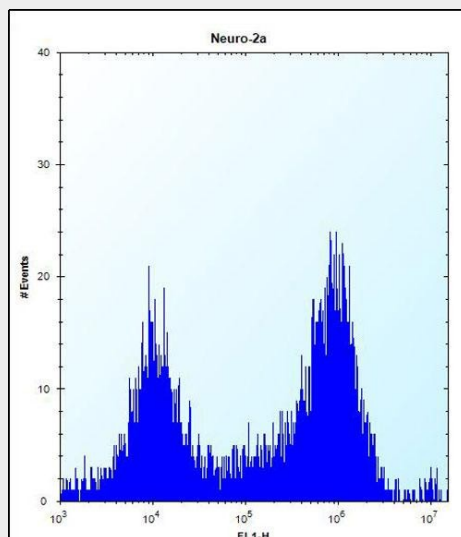
Mouse Csnk1a1 Antibody (C-term) - Images



Mouse Csnk1a1 Antibody (C-term) (Cat. #AP14783b) western blot analysis in A549 cell line lysates (35ug/lane). This demonstrates the Csnk1a1 antibody detected the Csnk1a1 protein (arrow).



Mouse Csnk1a1 Antibody (C-term) (Cat. #AP14783b) western blot analysis in mouse Neuro-2a cell line lysates (35ug/lane). This demonstrates the Csnk1a1 antibody detected the Csnk1a1 protein (arrow).



Mouse Csnk1a1 Antibody (C-term) (Cat. #AP14783b) flow cytometric analysis of Neuro-2a cells (right histogram) compared to a negative control cell (left histogram). FITC-conjugated donkey-anti-rabbit secondary antibodies were used for the analysis.

Mouse Csnk1a1 Antibody (C-term) - Background

Casein kinases are operationally defined by their preferential utilization of acidic proteins such as caseins as substrates. It can phosphorylate a large number of proteins. Participates in Wnt signaling. Phosphorylates CTNNB1 at 'Ser-45'. May play a role in segregating chromosomes during mitosis (By similarity).