

OTX1 Antibody (Center)
Affinity Purified Rabbit Polyclonal Antibody (Pab)
Catalog # AP14805c**Specification**

OTX1 Antibody (Center) - Product Information

Application	WB,E
Primary Accession	P32242
Other Accession	NP_055377.1
Reactivity	Human
Host	Rabbit
Clonality	Polyclonal
Isotype	Rabbit IgG
Calculated MW	37327
Antigen Region	87-116

OTX1 Antibody (Center) - Additional Information**Gene ID** 5013**Other Names**

Homeobox protein OTX1, Orthodenticle homolog 1, OTX1

Target/Specificity

This OTX1 antibody is generated from rabbits immunized with a KLH conjugated synthetic peptide between 87-116 amino acids from the Central region of human OTX1.

Dilution

WB~~1:1000

Format

Purified polyclonal antibody supplied in PBS with 0.09% (W/V) sodium azide. This antibody is purified through a protein A column, followed by peptide affinity purification.

Storage

Maintain refrigerated at 2-8°C for up to 2 weeks. For long term storage store at -20°C in small aliquots to prevent freeze-thaw cycles.

Precautions

OTX1 Antibody (Center) is for research use only and not for use in diagnostic or therapeutic procedures.

OTX1 Antibody (Center) - Protein Information**Name** OTX1

Function Probably plays a role in the development of the brain and the sense organs. Can bind to the BCD target sequence (BTS): 5'-TCTAATCCC- 3'.

Cellular Location

Nucleus.

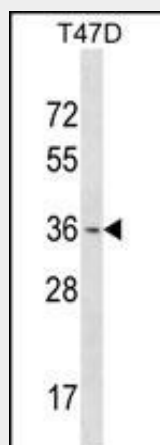
Tissue Location

Expressed in brain. Detected in the anterior part of the neural fetal retina (at protein level)

OTX1 Antibody (Center) - Protocols

Provided below are standard protocols that you may find useful for product applications.

- [Western Blot](#)
- [Blocking Peptides](#)
- [Dot Blot](#)
- [Immunohistochemistry](#)
- [Immunofluorescence](#)
- [Immunoprecipitation](#)
- [Flow Cytometry](#)
- [Cell Culture](#)

OTX1 Antibody (Center) - Images

OTX1 Antibody (Center) (Cat. #AP14805c) western blot analysis in T47D cell line lysates (35ug/lane). This demonstrates the OTX1 antibody detected the OTX1 protein (arrow).

OTX1 Antibody (Center) - Background

This gene encodes a member of the bicoid sub-family of homeodomain-containing transcription factors. The encoded protein acts as a transcription factor and may play a role in brain and sensory organ development. A similar protein in mice is required for proper brain and sensory organ development and can cause epilepsy.

OTX1 Antibody (Center) - References

Larsen, K.B., et al. J. Histochem. Cytochem. 58(7):669-678(2010)
Omodei, D., et al. Am. J. Pathol. 175(6):2609-2617(2009)
Eeles, R.A., et al. Nat. Genet. 41(10):1116-1121(2009)
Larsen, K.B., et al. Int. J. Dev. Neurosci. 27(5):485-492(2009)
Xin, X., et al. Genome Res. 19(7):1262-1269(2009)