

**KLK15 Antibody (Center)**  
**Affinity Purified Rabbit Polyclonal Antibody (Pab)**  
**Catalog # AP14825c****Specification**

---

**KLK15 Antibody (Center) - Product Information**

|                   |   |
|-------------------|---|
| Application       | WB, IHC-P,E   |
| Primary Accession | <a href="#">Q9H2R5</a>                                    |
| Other Accession   | <a href="#">NP_059979.2</a> , <a href="#">NP_612631.1</a> |
| Reactivity        | Human   |
| Host              | Rabbit  |
| Clonality         | Polyclonal  |
| Isotype           | Rabbit IgG  |
| Calculated MW     | 28087   |
| Antigen Region    | 78-106  |

**KLK15 Antibody (Center) - Additional Information****Gene ID** 55554**Other Names**

Kallikrein-15, 3421-, ACO protease, KLK15

**Target/Specificity**

This KLK15 antibody is generated from rabbits immunized with a KLH conjugated synthetic peptide between 78-106 amino acids from the Central region of human KLK15.

**Dilution**

WB~~1:1000

IHC-P~~1:10~50

**Format**

Purified polyclonal antibody supplied in PBS with 0.09% (W/V) sodium azide. This antibody is purified through a protein A column, followed by peptide affinity purification.

**Storage**

Maintain refrigerated at 2-8°C for up to 2 weeks. For long term storage store at -20°C in small aliquots to prevent freeze-thaw cycles.

**Precautions**

KLK15 Antibody (Center) is for research use only and not for use in diagnostic or therapeutic procedures.

**KLK15 Antibody (Center) - Protein Information****Name** KLK15**Function** Protease whose physiological substrate is not yet known.

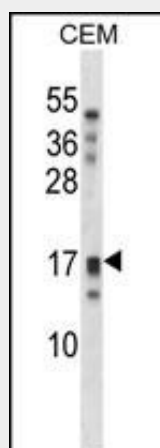
**Cellular Location**  
Secreted.**Tissue Location**

Highest expression in the thyroid gland. Also expressed in the prostate, salivary, and adrenal glands and in the colon testis and kidney.

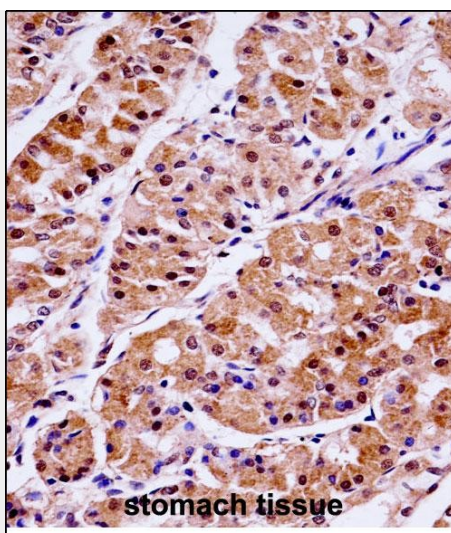
**KLK15 Antibody (Center) - Protocols**

Provided below are standard protocols that you may find useful for product applications.

- [Western Blot](#)
- [Blocking Peptides](#)
- [Dot Blot](#)
- [Immunohistochemistry](#)
- [Immunofluorescence](#)
- [Immunoprecipitation](#)
- [Flow Cytometry](#)
- [Cell Culture](#)

**KLK15 Antibody (Center) - Images**

KLK15 Antibody (Center) (Cat. #AP14825c) western blot analysis in CEM cell line lysates (35ug/lane). This demonstrates the KLK15 antibody detected the KLK15 protein (arrow).



KLK15 Antibody (Center) (AP14825c) immunohistochemistry analysis in formalin fixed and paraffin embedded human stomach tissue followed by peroxidase conjugation of the secondary antibody and DAB staining. This data demonstrates the use of KLK15 Antibody (Center) for immunohistochemistry. Clinical relevance has not been evaluated.

#### **KLK15 Antibody (Center) - Background**

Kallikreins are a subgroup of serine proteases having diverse physiological functions. Growing evidence suggests that many kallikreins are implicated in carcinogenesis and some have potential as novel cancer and other disease biomarkers. This gene is one of the fifteen kallikrein subfamily members located in a cluster on chromosome 19. In prostate cancer, this gene has increased expression, which indicates its possible use as a diagnostic or prognostic marker for prostate cancer. The gene contains multiple polyadenylation sites and alternative splicing results in multiple transcript variants encoding distinct isoforms.

#### **KLK15 Antibody (Center) - References**

Rabien, A., et al. Int. J. Cancer 127(10):2386-2394(2010)  
Bailey, S.D., et al. Diabetes Care 33(10):2250-2253(2010)  
Han, S., et al. Hum. Immunol. 71(7):727-730(2010)  
Gallagher, D.J., et al. Clin. Cancer Res. 16(10):2819-2832(2010)  
Klein, R.J., et al. Cancer Prev Res (Phila) 3(5):611-619(2010)