

CACNB2 Antibody (Center)
Affinity Purified Rabbit Polyclonal Antibody (Pab)
Catalog # AP14868c

Specification

CACNB2 Antibody (Center) - Product Information

Application	WB,E
Primary Accession	Q08289
Other Accession	Q8VGC3 , P54288 , Q8CC27 , Q9MZL5 , NP_963864.1 , NP_963890.2
Reactivity	Human
Predicted	Bovine, Mouse, Rabbit, Rat
Host	Rabbit
Clonality	Polyclonal
Isotype	Rabbit IgG
Calculated MW	73581
Antigen Region	232-261

CACNB2 Antibody (Center) - Additional Information

Gene ID 783

Other Names

Voltage-dependent L-type calcium channel subunit beta-2, CAB2, Calcium channel voltage-dependent subunit beta 2, Lambert-Eaton myasthenic syndrome antigen B, MYSB, CACNB2, CACNLB2, MYSB

Target/Specificity

This CACNB2 antibody is generated from rabbits immunized with a KLH conjugated synthetic peptide between 232-261 amino acids from the Central region of human CACNB2.

Dilution

WB~~1:1000

Format

Purified polyclonal antibody supplied in PBS with 0.09% (W/V) sodium azide. This antibody is purified through a protein A column, followed by peptide affinity purification.

Storage

Maintain refrigerated at 2-8°C for up to 2 weeks. For long term storage store at -20°C in small aliquots to prevent freeze-thaw cycles.

Precautions

CACNB2 Antibody (Center) is for research use only and not for use in diagnostic or therapeutic procedures.

CACNB2 Antibody (Center) - Protein Information

Name CACNB2

Synonyms CACNLB2, MYSB

Function Beta subunit of voltage-dependent calcium channels which contributes to the function of the calcium channel by increasing peak calcium current (By similarity). Plays a role in shifting voltage dependencies of activation and inactivation of the channel (By similarity). May modulate G protein inhibition (By similarity). May contribute to beta-adrenergic augmentation of Ca(2+) influx in cardiomyocytes, thereby regulating increases in heart rate and contractile force (PubMed:[36424916](#)). Involved in membrane targeting of the alpha-1 subunit CACNA1C (PubMed:[17525370](#)).

Cellular Location

Cell membrane, sarcolemma; Peripheral membrane protein; Cytoplasmic side

Tissue Location

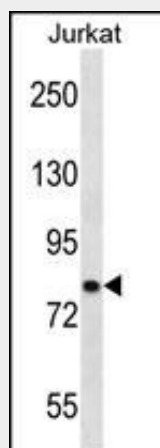
Expressed in all tissues.

CACNB2 Antibody (Center) - Protocols

Provided below are standard protocols that you may find useful for product applications.

- [Western Blot](#)
- [Blocking Peptides](#)
- [Dot Blot](#)
- [Immunohistochemistry](#)
- [Immunofluorescence](#)
- [Immunoprecipitation](#)
- [Flow Cytometry](#)
- [Cell Culture](#)

CACNB2 Antibody (Center) - Images



CACNB2 Antibody (Center) (Cat. #AP14868c) western blot analysis in Jurkat cell line lysates (35ug/lane). This demonstrates the CACNB2 antibody detected the CACNB2 protein (arrow).

CACNB2 Antibody (Center) - Background

This gene encodes a subunit of a voltage-dependent calcium channel protein which is a member of the voltage-gated calcium

channel superfamily. The gene product was originally identified as an antigen target in Lambert-Eaton myasthenic syndrome which is an autoimmune disorder. Mutations in this gene are associated with Brugada syndrome. Alternatively spliced variants have been identified for this gene.

CACNB2 Antibody (Center) - References

Burashnikov, E., et al. Heart Rhythm (2010) In press :
Shimada, M., et al. Hum. Genet. 128(4):433-441(2010)
Takeuchi, F., et al. Circulation 121(21):2302-2309(2010)
Hong, K.W., et al. J. Hum. Genet. 55(6):336-341(2010)
Lee, M.T., et al. Mol. Psychiatry (2010) In press :