

**ICOSLG Antibody (C-term)**  
**Affinity Purified Rabbit Polyclonal Antibody (Pab)**  
**Catalog # AP14872b****Specification**

---

**ICOSLG Antibody (C-term) - Product Information**

Application	WB,E
Primary Accession	<a href="#">O75144</a>
Other Accession	<a href="#">NP_056074.1</a>
Reactivity	Human
Host	Rabbit
Clonality	Polyclonal
Isotype	Rabbit IgG
Calculated MW	33349
Antigen Region	217-246

**ICOSLG Antibody (C-term) - Additional Information****Gene ID** 23308**Other Names**

ICOS ligand, B7 homolog 2, B7-H2, B7-like protein GI50, B7-related protein 1, B7RP-1, CD275, ICOSLG, B7H2, B7RP1, ICOSL, KIAA0653

**Target/Specificity**

This ICOSLG antibody is generated from rabbits immunized with a KLH conjugated synthetic peptide between 217-246 amino acids from the C-terminal region of human ICOSLG.

**Dilution**

WB~~1:1000

**Format**

Purified polyclonal antibody supplied in PBS with 0.09% (W/V) sodium azide. This antibody is purified through a protein A column, followed by peptide affinity purification.

**Storage**

Maintain refrigerated at 2-8°C for up to 2 weeks. For long term storage store at -20°C in small aliquots to prevent freeze-thaw cycles.

**Precautions**

ICOSLG Antibody (C-term) is for research use only and not for use in diagnostic or therapeutic procedures.

**ICOSLG Antibody (C-term) - Protein Information****Name** ICOSLG**Synonyms** B7H2, B7RP1, ICOSL, KIAA0653

**Function** Ligand for the T-cell-specific cell surface receptor ICOS. Acts as a costimulatory signal for T-cell proliferation and cytokine secretion; induces also B-cell proliferation and differentiation into plasma cells. Could play an important role in mediating local tissue responses to inflammatory conditions, as well as in modulating the secondary immune response by co-stimulating memory T-cell function (By similarity).

#### **Cellular Location**

Cell membrane; Single-pass type I membrane protein

#### **Tissue Location**

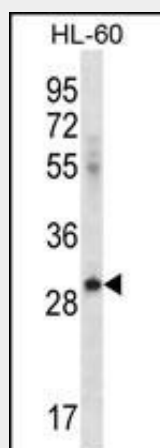
Isoform 1 is widely expressed (brain, heart, kidney, liver, lung, pancreas, placenta, skeletal muscle, bone marrow, colon, ovary, prostate, testis, lymph nodes, leukocytes, spleen, thymus and tonsil), while isoform 2 is detected only in lymph nodes, leukocytes and spleen. Expressed on activated monocytes and dendritic cells.

### **ICOSLG Antibody (C-term) - Protocols**

Provided below are standard protocols that you may find useful for product applications.

- [Western Blot](#)
- [Blocking Peptides](#)
- [Dot Blot](#)
- [Immunohistochemistry](#)
- [Immunofluorescence](#)
- [Immunoprecipitation](#)
- [Flow Cytometry](#)
- [Cell Culture](#)

### **ICOSLG Antibody (C-term) - Images**



ICOSLG Antibody (C-term) (Cat. #AP14872b) western blot analysis in HL-60 cell line lysates (35ug/lane). This demonstrates the ICOSLG antibody detected the ICOSLG protein (arrow).

### **ICOSLG Antibody (C-term) - Background**

Ligand for the T-cell-specific cell surface receptor ICOS. Acts as a costimulatory signal for T-cell proliferation and cytokine secretion; induces also B-cell proliferation and differentiation into plasma cells. Could play an important role in mediating local tissue responses to inflammatory conditions, as well as in modulating the secondary immune response by co-stimulating memory T-cell function (By similarity).

**ICOSLG Antibody (C-term) - References**

Shimada, M., et al. Hum. Genet. 128(4):433-441(2010)  
Bailey, S.D., et al. Diabetes Care 33(10):2250-2253(2010)  
Wang, K., et al. Hum. Mol. Genet. 19(10):2059-2067(2010)  
Pan, F., et al. Immunogenetics 62(4):237-251(2010)  
Dubois, P.C., et al. Nat. Genet. 42(4):295-302(2010)