

ALG11 Antibody (C-term)
Affinity Purified Rabbit Polyclonal Antibody (Pab)
Catalog # AP14881B**Specification**

ALG11 Antibody (C-term) - Product Information

Application	WB,E
Primary Accession	Q2TAA5
Other Accession	NP_001004127.2
Reactivity	Human
Host	Rabbit
Clonality	Polyclonal
Isotype	Rabbit IgG
Calculated MW	55651
Antigen Region	344-373

ALG11 Antibody (C-term) - Additional Information**Gene ID** 440138**Other Names**

GDP-Man:Man(3)GlcNAc(2)-PP-Dol alpha-1, 2-mannosyltransferase, Asparagine-linked glycosylation protein 11 homolog, Glycolipid 2-alpha-mannosyltransferase, ALG11, GT8

Target/Specificity

This ALG11 antibody is generated from rabbits immunized with a KLH conjugated synthetic peptide between 344-373 amino acids from the C-terminal region of human ALG11.

Dilution

WB~~1:1000

Format

Purified polyclonal antibody supplied in PBS with 0.09% (W/V) sodium azide. This antibody is purified through a protein A column, followed by peptide affinity purification.

Storage

Maintain refrigerated at 2-8°C for up to 2 weeks. For long term storage store at -20°C in small aliquots to prevent freeze-thaw cycles.

Precautions

ALG11 Antibody (C-term) is for research use only and not for use in diagnostic or therapeutic procedures.

ALG11 Antibody (C-term) - Protein Information**Name** ALG11**Synonyms** GT8

Function Mannosyltransferase involved in the last steps of the synthesis of Man5GlcNAc(2)-PP-dolichol core oligosaccharide on the cytoplasmic face of the endoplasmic reticulum. Catalyzes the addition of the 4th and 5th mannose residues to the dolichol-linked oligosaccharide chain.

Cellular Location

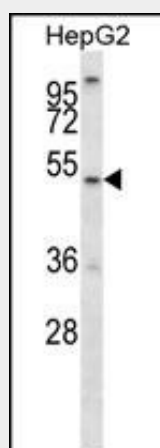
Endoplasmic reticulum. Endoplasmic reticulum membrane; Multi-pass membrane protein

ALG11 Antibody (C-term) - Protocols

Provided below are standard protocols that you may find useful for product applications.

- [Western Blot](#)
- [Blocking Peptides](#)
- [Dot Blot](#)
- [Immunohistochemistry](#)
- [Immunofluorescence](#)
- [Immunoprecipitation](#)
- [Flow Cytometry](#)
- [Cell Culture](#)

ALG11 Antibody (C-term) - Images



ALG11 Antibody (C-term) (Cat. #AP14881b) western blot analysis in HepG2 cell line lysates (35ug/lane). This demonstrates the ALG11 antibody detected the ALG11 protein (arrow).

ALG11 Antibody (C-term) - Background

This gene encodes a GDP-Man:Man3GlcNAc2-PP-dolichol-alpha1,2-mannosyltransferase which is localized to the cytosolic side of the endoplasmic reticulum (ER) and catalyzes the transfer of the fourth and fifth mannose residue from GDP-mannose (GDP-Man) to Man3GlcNAc2-PP-dolichol and Man4GlcNAc2-PP-dolichol resulting in the production of Man5GlcNAc2-PP-dolichol. Mutations in this gene are associated with congenital disorder of glycosylation type I_p (CDGIP). This gene overlaps but is distinct from the UTP14, U3 small nucleolar ribonucleoprotein, homolog C (yeast) gene. A pseudogene of the GDP-Man:Man3GlcNAc2-PP-dolichol-alpha1,2-mannosyltransferase has been identified on chromosome 19.

ALG11 Antibody (C-term) - References

Rind, N., et al. Hum. Mol. Genet. 19(8):1413-1424(2010)
Rohozinski, J., et al. Biol. Reprod. 74(4):644-651(2006)