

CLCNKB Antibody (N-term)
Affinity Purified Rabbit Polyclonal Antibody (Pab)
Catalog # AP14969A

Specification

CLCNKB Antibody (N-term) - Product Information

Application	WB,E
Primary Accession	P51801
Other Accession	Q9WUB7 , NP_000076.2
Reactivity	Mouse
Host	Rabbit
Clonality	Polyclonal
Isotype	Rabbit IgG
Calculated MW	75446
Antigen Region	11-40

CLCNKB Antibody (N-term) - Additional Information

Gene ID 1188

Other Names

Chloride channel protein CIC-Kb, Chloride channel Kb, CIC-K2, CLCNKB

Target/Specificity

This CLCNKB antibody is generated from rabbits immunized with a KLH conjugated synthetic peptide between 11-40 amino acids from the N-terminal region of human CLCNKB.

Dilution

WB~~1:1000

Format

Purified polyclonal antibody supplied in PBS with 0.09% (W/V) sodium azide. This antibody is purified through a protein A column, followed by peptide affinity purification.

Storage

Maintain refrigerated at 2-8°C for up to 2 weeks. For long term storage store at -20°C in small aliquots to prevent freeze-thaw cycles.

Precautions

CLCNKB Antibody (N-term) is for research use only and not for use in diagnostic or therapeutic procedures.

CLCNKB Antibody (N-term) - Protein Information

Name CLCNKB

Function Voltage-gated chloride channel. Chloride channels have several functions including the regulation of cell volume; membrane potential stabilization, signal transduction and transepithelial

transport. May be important in urinary concentrating mechanisms.

Cellular Location

Cell membrane; Multi-pass membrane protein.

Tissue Location

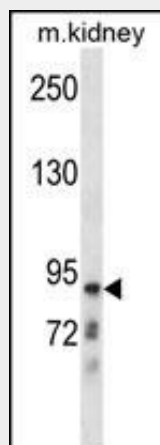
Expressed predominantly in the kidney.

CLCNKB Antibody (N-term) - Protocols

Provided below are standard protocols that you may find useful for product applications.

- [Western Blot](#)
- [Blocking Peptides](#)
- [Dot Blot](#)
- [Immunohistochemistry](#)
- [Immunofluorescence](#)
- [Immunoprecipitation](#)
- [Flow Cytometry](#)
- [Cell Culture](#)

CLCNKB Antibody (N-term) - Images



CLCNKB Antibody (N-term) (Cat. #AP14969a) western blot analysis in mouse kidney tissue lysates (35ug/lane). This demonstrates the CLCNKB antibody detected the CLCNKB protein (arrow).

CLCNKB Antibody (N-term) - Background

The protein encoded by this gene is a member of the family of voltage-gated chloride channels. Chloride channels have several functions, including the regulation of cell volume, membrane potential stabilization, signal transduction and transepithelial transport. This gene is expressed predominantly in the kidney and may be important for renal salt reabsorption. Mutations in this gene are associated with autosomal recessive Bartter syndrome type 3 (BS3). Alternatively spliced transcript variants encoding different isoforms have been found for this gene. [provided by RefSeq].

CLCNKB Antibody (N-term) - References

Bailey, S.D., et al. Diabetes Care 33(10):2250-2253(2010)
Yu, Y., et al. Clin. Genet. 77(2):155-162(2010)
Talmud, P.J., et al. Am. J. Hum. Genet. 85(5):628-642(2009)
Brochard, K., et al. Nephrol. Dial. Transplant. 24(5):1455-1464(2009)
Sile, S., et al. J. Hypertens. 27(2):298-304(2009)