

**PPP2R5A Antibody (C-term)**  
**Affinity Purified Rabbit Polyclonal Antibody (Pab)**  
**Catalog # AP14971b**

**Specification**

---

**PPP2R5A Antibody (C-term) - Product Information**

Application	WB,E
Primary Accession	<a href="#">Q15172</a>
Other Accession	<a href="#">Q6PD03</a> , <a href="#">NP_006234.1</a>
Reactivity	Mouse
Host	Rabbit
Clonality	Polyclonal
Isotype	Rabbit IgG
Calculated MW	56194
Antigen Region	418-446

**PPP2R5A Antibody (C-term) - Additional Information**

**Gene ID** 5525

**Other Names**

Serine/threonine-protein phosphatase 2A 56 kDa regulatory subunit alpha isoform, PP2A B subunit isoform B'-alpha, PP2A B subunit isoform B56-alpha, PP2A B subunit isoform PR61-alpha, PR61alpha, PP2A B subunit isoform R5-alpha, PPP2R5A

**Target/Specificity**

This PPP2R5A antibody is generated from rabbits immunized with a KLH conjugated synthetic peptide between 418-446 amino acids from the C-terminal region of human PPP2R5A.

**Dilution**

WB~~1:1000

**Format**

Purified polyclonal antibody supplied in PBS with 0.09% (W/V) sodium azide. This antibody is purified through a protein A column, followed by peptide affinity purification.

**Storage**

Maintain refrigerated at 2-8°C for up to 2 weeks. For long term storage store at -20°C in small aliquots to prevent freeze-thaw cycles.

**Precautions**

PPP2R5A Antibody (C-term) is for research use only and not for use in diagnostic or therapeutic procedures.

**PPP2R5A Antibody (C-term) - Protein Information**

**Name** PPP2R5A

**Function** The B regulatory subunit might modulate substrate selectivity and catalytic activity, and also might direct the localization of the catalytic enzyme to a particular subcellular compartment.

**Cellular Location**

Cytoplasm. Nucleus. Chromosome, centromere. Note=From mitotic prophase to metaphase, localizes at the inner centromere between a pair of sister kinetochores. Decreased expression at the onset of anaphase

**Tissue Location**

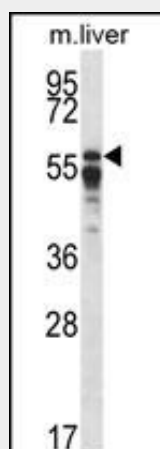
Widely expressed with the highest expression in heart and skeletal muscle

**PPP2R5A Antibody (C-term) - Protocols**

Provided below are standard protocols that you may find useful for product applications.

- [Western Blot](#)
- [Blocking Peptides](#)
- [Dot Blot](#)
- [Immunohistochemistry](#)
- [Immunofluorescence](#)
- [Immunoprecipitation](#)
- [Flow Cytometry](#)
- [Cell Culture](#)

**PPP2R5A Antibody (C-term) - Images**



PPP2R5A Antibody (C-term) (Cat. #AP14971b) western blot analysis in mouse liver tissue lysates (35ug/lane). This demonstrates the PPP2R5A antibody detected the PPP2R5A protein (arrow).

**PPP2R5A Antibody (C-term) - Background**

The product of this gene belongs to the phosphatase 2A regulatory subunit B family. Protein phosphatase 2A is one of the four major Ser/Thr phosphatases, and it is implicated in the negative control of cell growth and division. It consists of a common heteromeric core enzyme, which is composed of a catalytic subunit and a constant regulatory subunit, that associates with a variety of regulatory subunits. The B regulatory subunit might modulate substrate selectivity and catalytic activity. This gene encodes an alpha isoform of the regulatory subunit B56 subfamily.

**PPP2R5A Antibody (C-term) - References**

Flegg, C.P., et al. J. Biol. Chem. 285(24):18144-18154(2010)  
Freeman, A.K., et al. Cell Cycle 9(4):736-747(2010)  
Reece, K.M., et al. Biochem. Biophys. Res. Commun. 386(4):582-587(2009)  
Li, H., et al. Mol. Cell. Biol. 29(3):919-928(2009)  
Ruvolo, V.R., et al. J. Biol. Chem. 283(51):35474-35485(2008)