

**GJA3 Antibody (N-term)**  
**Purified Rabbit Polyclonal Antibody (Pab)**  
**Catalog # AP1543a****Specification**

---

**GJA3 Antibody (N-term) - Product Information**

Application	WB, IHC-P,E
Primary Accession	<a href="#">Q9Y6H8</a>
Reactivity	Human
Host	Rabbit
Clonality	Polyclonal
Isotype	Rabbit IgG
Antigen Region	108-139

**GJA3 Antibody (N-term) - Additional Information****Gene ID** 2700**Other Names**

Gap junction alpha-3 protein, Connexin-46, Cx46, GJA3

**Target/Specificity**

This GJA3 antibody is generated from rabbits immunized with a KLH conjugated synthetic peptide between 108-139 amino acids from the N-terminal region of human GJA3.

**Dilution**

WB~~1:1000

IHC-P~~1:50~100

**Format**

Purified polyclonal antibody supplied in PBS with 0.09% (W/V) sodium azide. This antibody is prepared by Saturated Ammonium Sulfate (SAS) precipitation followed by dialysis against PBS.

**Storage**

Maintain refrigerated at 2-8°C for up to 2 weeks. For long term storage store at -20°C in small aliquots to prevent freeze-thaw cycles.

**Precautions**

GJA3 Antibody (N-term) is for research use only and not for use in diagnostic or therapeutic procedures.

**GJA3 Antibody (N-term) - Protein Information****Name** GJA3

**Function** Structural component of lens fiber gap junctions (PubMed:[30044662](#)). Gap junctions are dodecameric channels that connect the cytoplasm of adjoining cells (By similarity). They are formed by the docking of two hexameric hemichannels, one from each cell membrane. Small

molecules and ions diffuse from one cell to a neighboring cell via the central pore (PubMed:[30044662](#)).

#### **Cellular Location**

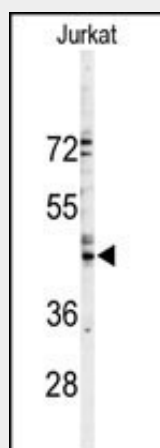
Cell membrane; Multi-pass membrane protein {ECO:0000250|UniProtKB:Q9TU17}. Cell junction, gap junction

#### **GJA3 Antibody (N-term) - Protocols**

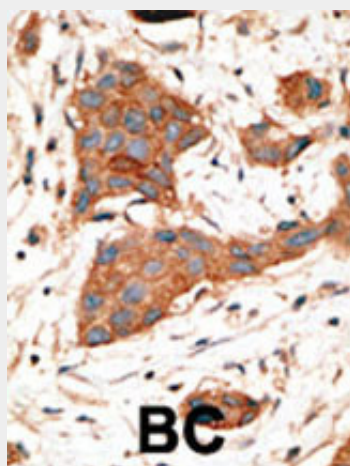
Provided below are standard protocols that you may find useful for product applications.

- [Western Blot](#)
- [Blocking Peptides](#)
- [Dot Blot](#)
- [Immunohistochemistry](#)
- [Immunofluorescence](#)
- [Immunoprecipitation](#)
- [Flow Cytometry](#)
- [Cell Culture](#)

#### **GJA3 Antibody (N-term) - Images**



Western blot analysis of GJA3 Antibody (N-term) (Cat.#AP1543a) in Jurkat cell line lysates (35ug/lane). GJA3 (arrow) was detected using the purified Pab.



Formalin-fixed and paraffin-embedded human cancer tissue reacted with the primary antibody, which was peroxidase-conjugated to the secondary antibody, followed by DAB staining. This data demonstrates the use of this antibody for immunohistochemistry; clinical relevance has not been evaluated. BC = breast carcinoma;

#### **GJA3 Antibody (N-term) - Background**

GJA3, an integral membrane protein, belong to the connexin family, alpha-type (group II) subfamily. One gap junction consists of a cluster of closely packed pairs of transmembrane channels, the connexons, through which materials of low MW diffuse from one cell to a neighboring cell. A connexon is composed of a hexamer of connexins. This particular connexin is a component of lens fiber gap junctions, can form both junctional and nonjunctional ('hemi-') channels. Defects in GJA3 are the cause of zonular pulverulent cataract type 3 (CZP3), a form of autosomal dominant congenital cataract.

#### **GJA3 Antibody (N-term) - References**

Mackay, D., et al., Am. J. Hum. Genet. 64(5):1357-1364 (1999).