

RAB25 Antibody (Center)
Affinity Purified Rabbit Polyclonal Antibody (Pab)
Catalog # AP16015c**Specification**

RAB25 Antibody (Center) - Product Information

Application	WB,E
Primary Accession	P57735
Other Accession	P46629 , NP_065120.2
Reactivity	Mouse
Predicted	Rabbit
Host	Rabbit
Clonality	Polyclonal
Isotype	Rabbit IgG
Calculated MW	23496
Antigen Region	113-141

RAB25 Antibody (Center) - Additional Information**Gene ID** 57111**Other Names**

Ras-related protein Rab-25, CATX-8, RAB25, CATX8

Target/Specificity

This RAB25 antibody is generated from rabbits immunized with a KLH conjugated synthetic peptide between 113-141 amino acids from the Central region of human RAB25.

Dilution

WB~~1:1000

Format

Purified polyclonal antibody supplied in PBS with 0.09% (W/V) sodium azide. This antibody is purified through a protein A column, followed by peptide affinity purification.

Storage

Maintain refrigerated at 2-8°C for up to 2 weeks. For long term storage store at -20°C in small aliquots to prevent freeze-thaw cycles.

Precautions

RAB25 Antibody (Center) is for research use only and not for use in diagnostic or therapeutic procedures.

RAB25 Antibody (Center) - Protein Information**Name** RAB25 ([HGNC:18238](#))**Synonyms** CATX8

Function Involved in the regulation of cell survival. Promotes invasive migration of cells in which it functions to localize and maintain integrin alpha-V/beta-1 at the tips of extending pseudopodia (PubMed:[17925226](#)). Involved in the regulation of epithelial morphogenesis through the control of CLDN4 expression and localization at tight junctions (By similarity). May selectively regulate the apical recycling pathway. Together with MYO5B regulates transcytosis (By similarity).

Cellular Location

Cell membrane; Lipid-anchor; Cytoplasmic side. Cell projection, pseudopodium membrane. Cytoplasmic vesicle. Note=Colocalizes with integrin alpha-V/beta-1 in vesicles at the pseudopodial tips

Tissue Location

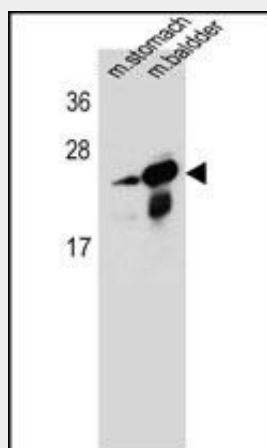
Expressed in ovarian epithelium (NOE) and breast tissue. Expressed in ovarian cancer; expression is increased relative to NOE cells. Expression in ovarian cancer is stage dependent, with stage III and stage IV showing higher levels than early stage cancers Expressed in breast cancer; expression is increased relative to normal breast tissue.

RAB25 Antibody (Center) - Protocols

Provided below are standard protocols that you may find useful for product applications.

- [Western Blot](#)
- [Blocking Peptides](#)
- [Dot Blot](#)
- [Immunohistochemistry](#)
- [Immunofluorescence](#)
- [Immunoprecipitation](#)
- [Flow Cytometry](#)
- [Cell Culture](#)

RAB25 Antibody (Center) - Images



RAB25 Antibody (Center) (Cat. #AP16015c) western blot analysis in mouse stomach,bladder tissue lysates (35ug/lane).This demonstrates the RAB25 antibody detected the RAB25 protein (arrow).

RAB25 Antibody (Center) - Background

RAB proteins, such as RAB25, are members of the RAS superfamily of small GTPases that are involved in membrane

trafficking. Members of the RAB11 subfamily, including RAB25, control the return of internalized membrane-associated moieties to the cell surface (Caswell et al., 2007 [PubMed 17925226]).[supplied by OMIM].

RAB25 Antibody (Center) - References

Cheng, J.M., et al. Int. J. Cancer 126(12):2799-2812(2010)
Nam, K.T., et al. J. Clin. Invest. 120(3):840-849(2010)
Caswell, P.T., et al. Dev. Cell 13(4):496-510(2007)
Ewing, R.M., et al. Mol. Syst. Biol. 3, 89 (2007) :
Fan, Y., et al. Pathology 38(6):561-567(2006)