

**Mouse Cdkl5 Antibody (C-term)**  
**Affinity Purified Rabbit Polyclonal Antibody (Pab)**  
**Catalog # AP16017b****Specification**

---

**Mouse Cdkl5 Antibody (C-term) - Product Information**

Application	WB,E
Primary Accession	<a href="#">Q3UTQ8</a>
Reactivity	Mouse
Host	Rabbit
Clonality	Polyclonal
Isotype	Rabbit IgG
Calculated MW	105489
Antigen Region	730-758

**Mouse Cdkl5 Antibody (C-term) - Additional Information****Gene ID** 382253**Other Names**

Cyclin-dependent kinase-like 5, Cdkl5

**Target/Specificity**

This Mouse Cdkl5 antibody is generated from rabbits immunized with a KLH conjugated synthetic peptide between 730-758 amino acids from the C-terminal region of mouse Cdkl5.

**Dilution**

WB~~1:1000

**Format**

Purified polyclonal antibody supplied in PBS with 0.09% (W/V) sodium azide. This antibody is purified through a protein A column, followed by peptide affinity purification.

**Storage**

Maintain refrigerated at 2-8°C for up to 2 weeks. For long term storage store at -20°C in small aliquots to prevent freeze-thaw cycles.

**Precautions**

Mouse Cdkl5 Antibody (C-term) is for research use only and not for use in diagnostic or therapeutic procedures.

**Mouse Cdkl5 Antibody (C-term) - Protein Information****Name** Cdkl5 {ECO:0000312|MGI:MGI:1278336}**Function** Mediates phosphorylation of MECP2. May regulate ciliogenesis.**Cellular Location**

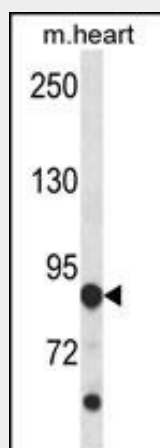
Nucleus {ECO:0000250|UniProtKB:O76039}. Cytoplasm, cytoskeleton, cilium basal body {ECO:0000250|UniProtKB:O76039}. Cytoplasm, cytoskeleton, microtubule organizing center, centrosome {ECO:0000250|UniProtKB:O76039}

### Mouse Cdkl5 Antibody (C-term) - Protocols

Provided below are standard protocols that you may find useful for product applications.

- [Western Blot](#)
- [Blocking Peptides](#)
- [Dot Blot](#)
- [Immunohistochemistry](#)
- [Immunofluorescence](#)
- [Immunoprecipitation](#)
- [Flow Cytometry](#)
- [Cell Culture](#)

### Mouse Cdkl5 Antibody (C-term) - Images



Mouse Cdkl5 Antibody (C-term) (Cat. #AP16017b) western blot analysis in mouse heart tissue lysates (35ug/lane). This demonstrates the Cdkl5 antibody detected the Cdkl5 protein (arrow).

### Mouse Cdkl5 Antibody (C-term) - Background

Cdkl5 mediates phosphorylation of MECP2 (By similarity).