

CHRD Antibody (Center)
Affinity Purified Rabbit Polyclonal Antibody (Pab)
Catalog # AP16028c**Specification**

CHRD Antibody (Center) - Product Information

Application	WB,E
Primary Accession	O9H2X0
Other Accession	NP_003732.2
Reactivity	Mouse
Host	Rabbit
Clonality	Polyclonal
Isotype	Rabbit IgG
Calculated MW	102032
Antigen Region	439-467

CHRD Antibody (Center) - Additional Information**Gene ID** 8646**Other Names**

Chordin, CHRD

Target/Specificity

This CHRD antibody is generated from rabbits immunized with a KLH conjugated synthetic peptide between 439-467 amino acids from the Central region of human CHRD.

Dilution

WB~~1:1000

Format

Purified polyclonal antibody supplied in PBS with 0.09% (W/V) sodium azide. This antibody is purified through a protein A column, followed by peptide affinity purification.

Storage

Maintain refrigerated at 2-8°C for up to 2 weeks. For long term storage store at -20°C in small aliquots to prevent freeze-thaw cycles.

Precautions

CHRD Antibody (Center) is for research use only and not for use in diagnostic or therapeutic procedures.

CHRD Antibody (Center) - Protein Information**Name** CHRD

Function Dorsalizing factor. Key developmental protein that dorsalizes early vertebrate embryonic tissues by binding to ventralizing TGF-beta family bone morphogenetic proteins (BMPs)

and sequestering them in latent complexes (By similarity).

Cellular Location

Secreted.

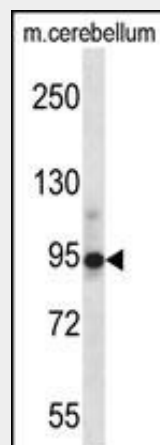
Tissue Location

Expressed at the highest level in liver.

CHRD Antibody (Center) - Protocols

Provided below are standard protocols that you may find useful for product applications.

- [Western Blot](#)
- [Blocking Peptides](#)
- [Dot Blot](#)
- [Immunohistochemistry](#)
- [Immunofluorescence](#)
- [Immunoprecipitation](#)
- [Flow Cytometry](#)
- [Cell Culture](#)

CHRD Antibody (Center) - Images

CHRD Antibody (Center) (Cat. #AP16028c) western blot analysis in mouse cerebellum tissue lysates (35ug/lane). This demonstrates the CHRD antibody detected the CHRD protein (arrow).

CHRD Antibody (Center) - Background

This gene encodes a secreted protein that dorsalizes early vertebrate embryonic tissues by binding to ventralizing TGF-beta-like bone morphogenetic proteins and sequestering them in latent complexes. The encoded protein may also have roles in organogenesis and during adulthood. Multiple transcript variants encoding distinct isoforms have been identified for this gene. Other alternative splice variants have been described but their full length sequence has not been determined.

CHRD Antibody (Center) - References

Bailey, S.D., et al. Diabetes Care 33(10):2250-2253(2010)

Yerges, L.M., et al. J. Bone Miner. Res. 24(12):2039-2049(2009)

Talmud, P.J., et al. Am. J. Hum. Genet. 85(5):628-642(2009)

Kwong, F.N., et al. J. Orthop. Res. 27(6):752-757(2009)

Kwong, F.N., et al. Int Orthop 33(1):281-288(2009)