

**SMEK2 Antibody (C-term)**  
**Affinity Purified Rabbit Polyclonal Antibody (Pab)**  
**Catalog # AP16035b**

**Specification**

---

**SMEK2 Antibody (C-term) - Product Information**

Application	WB,E
Primary Accession	<a href="#">Q5MIZ7</a>
Other Accession	<a href="#">NP_065196.1</a> , <a href="#">NP_001116436.1</a>
Reactivity	Human
Host	Rabbit
Clonality	Polyclonal
Isotype	Rabbit IgG
Calculated MW	97458
Antigen Region	720-748

**SMEK2 Antibody (C-term) - Additional Information**

**Gene ID** 57223

**Other Names**

Serine/threonine-protein phosphatase 4 regulatory subunit 3B, SMEK homolog 2, SMEK2, KIAA1387, PP4R3B, PPP4R3B

**Target/Specificity**

This SMEK2 antibody is generated from rabbits immunized with a KLH conjugated synthetic peptide between 720-748 amino acids from the C-terminal region of human SMEK2.

**Dilution**

WB~~1:1000

**Format**

Purified polyclonal antibody supplied in PBS with 0.09% (W/V) sodium azide. This antibody is purified through a protein A column, followed by peptide affinity purification.

**Storage**

Maintain refrigerated at 2-8°C for up to 2 weeks. For long term storage store at -20°C in small aliquots to prevent freeze-thaw cycles.

**Precautions**

SMEK2 Antibody (C-term) is for research use only and not for use in diagnostic or therapeutic procedures.

**SMEK2 Antibody (C-term) - Protein Information**

**Name** PPP4R3B ([HGNC:29267](#))

**Function** Regulatory subunit of serine/threonine-protein phosphatase 4 (PP4). May regulate the

activity of PPP4C at centrosomal microtubule organizing centers.

#### **Cellular Location**

Cytoplasm. Cytoplasm, cytoskeleton, microtubule organizing center, centrosome. Nucleus Note=In interphase localized in the cytoplasm and (with higher levels) the nucleus. During metaphase located in pericentriolar regions

#### **Tissue Location**

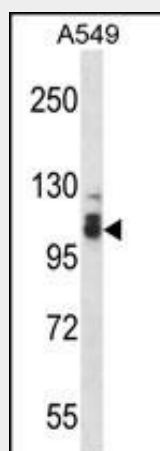
Moderately expressed in tissues and specific brain regions examined.

### **SMEK2 Antibody (C-term) - Protocols**

Provided below are standard protocols that you may find useful for product applications.

- [Western Blot](#)
- [Blocking Peptides](#)
- [Dot Blot](#)
- [Immunohistochemistry](#)
- [Immunofluorescence](#)
- [Immunoprecipitation](#)
- [Flow Cytometry](#)
- [Cell Culture](#)

### **SMEK2 Antibody (C-term) - Images**



SMEK2 Antibody (C-term) (Cat. #AP16035b) western blot analysis in A549 cell line lysates (35ug/lane). This demonstrates the SMEK2 antibody detected the SMEK2 protein (arrow).

### **SMEK2 Antibody (C-term) - Background**

Regulatory subunit of serine/threonine-protein phosphatase 4 (PP4). May regulate the activity of PPP4C at centrosomal microtubule organizing centers.

### **SMEK2 Antibody (C-term) - References**

- Chowdhury, D., et al. Mol. Cell 31(1):33-46(2008)  
Ewing, R.M., et al. Mol. Syst. Biol. 3, 89 (2007) :  
Beausoleil, S.A., et al. Nat. Biotechnol. 24(10):1285-1292(2006)  
Gingras, A.C., et al. Mol. Cell Proteomics 4(11):1725-1740(2005)  
Mendoza, M.C., et al. Mol. Cell. Biol. 25(17):7839-7853(2005)