

C4BPB Antibody (Center)
Affinity Purified Rabbit Polyclonal Antibody (Pab)
Catalog # AP16055c**Specification**

C4BPB Antibody (Center) - Product Information

Application	WB,E
Primary Accession	P20851
Other Accession	NP_001017365.1 , NP_001017367.1 , NP_000707.1
Reactivity	Human
Host	Rabbit
Clonality	Polyclonal
Isotype	Rabbit IgG
Calculated MW	28357
Antigen Region	125-153

C4BPB Antibody (Center) - Additional Information**Gene ID** 725**Other Names**

C4b-binding protein beta chain, C4BPB

Target/Specificity

This C4BPB antibody is generated from rabbits immunized with a KLH conjugated synthetic peptide between 125-153 amino acids from the Central region of human C4BPB.

Dilution

WB~~1:1000

Format

Purified polyclonal antibody supplied in PBS with 0.09% (W/V) sodium azide. This antibody is purified through a protein A column, followed by peptide affinity purification.

Storage

Maintain refrigerated at 2-8°C for up to 2 weeks. For long term storage store at -20°C in small aliquots to prevent freeze-thaw cycles.

Precautions

C4BPB Antibody (Center) is for research use only and not for use in diagnostic or therapeutic procedures.

C4BPB Antibody (Center) - Protein Information**Name** C4BPB**Function** Controls the classical pathway of complement activation. It binds as a cofactor to

C3b/C4b inactivator (C3bINA), which then hydrolyzes the complement fragment C4b. It also accelerates the degradation of the C4bC2a complex (C3 convertase) by dissociating the complement fragment C2a. It also interacts with anticoagulant protein S and with serum amyloid P component. The beta chain binds protein S.

Cellular Location

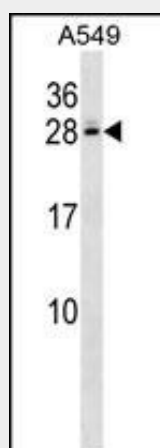
Secreted.

C4BPB Antibody (Center) - Protocols

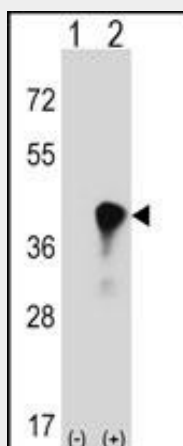
Provided below are standard protocols that you may find useful for product applications.

- [Western Blot](#)
- [Blocking Peptides](#)
- [Dot Blot](#)
- [Immunohistochemistry](#)
- [Immunofluorescence](#)
- [Immunoprecipitation](#)
- [Flow Cytometry](#)
- [Cell Culture](#)

C4BPB Antibody (Center) - Images



C4BPB Antibody (Center) (Cat. #AP16055c) western blot analysis in A549 cell line lysates (35ug/lane). This demonstrates the C4BPB antibody detected the C4BPB protein (arrow).



Western blot analysis of C4BPB (arrow) using rabbit polyclonal C4BPB Antibody (Center) (Cat. #AP16055c). 293 cell lysates (2 ug/lane) either nontransfected (Lane 1) or transiently transfected (Lane 2) with the C4BPB gene.

C4BPB Antibody (Center) - Background

This gene encodes a member of a superfamily of proteins composed predominantly of tandemly arrayed short consensus repeats of approximately 60 amino acids. A single, unique beta-chain encoded by this gene assembles with seven identical alpha-chains into the predominant isoform of C4b-binding protein, a multimeric protein that controls activation of the complement cascade through the classical pathway. C4b-binding protein has a regulatory role in the coagulation system also, mediated through the beta-chain binding of protein S, a vitamin K-dependent protein that serves as a cofactor of activated protein C. The genes encoding both alpha and beta chains are located adjacent to each other on human chromosome 1 in the regulator of complement activation gene cluster. Alternative splicing gives rise to multiple transcript variants.

C4BPB Antibody (Center) - References

Han, S., et al. Hum. Immunol. 71(7):727-730(2010)
Rose, J.E., et al. Mol. Med. 16 (7-8), 247-253 (2010) :
Buil, A., et al. Blood 115(23):4644-4650(2010)
Rajaraman, P., et al. Cancer Epidemiol. Biomarkers Prev. 19(5):1356-1361(2010)
Davila, S., et al. Genes Immun. 11(3):232-238(2010)