

**GATA3 Antibody (Center)**  
**Affinity Purified Rabbit Polyclonal Antibody (Pab)**  
**Catalog # AP16085c**

**Specification**

---

**GATA3 Antibody (Center) - Product Information**

Application	WB,E
Primary Accession	<a href="#">P23771</a>
Other Accession	<a href="#">P23772</a> , <a href="#">P23825</a> , <a href="#">NP_002042.1</a>
Reactivity	Human, Mouse
Predicted	Chicken
Host	Rabbit
Clonality	Polyclonal
Isotype	Rabbit IgG
Calculated MW	47916
Antigen Region	235-263

**GATA3 Antibody (Center) - Additional Information**

**Gene ID** 2625

**Other Names**

Trans-acting T-cell-specific transcription factor GATA-3, GATA-binding factor 3, GATA3

**Target/Specificity**

This GATA3 antibody is generated from rabbits immunized with a KLH conjugated synthetic peptide between 235-263 amino acids from the Central region of human GATA3.

**Dilution**

WB~~1:1000

**Format**

Purified polyclonal antibody supplied in PBS with 0.09% (W/V) sodium azide. This antibody is purified through a protein A column, followed by peptide affinity purification.

**Storage**

Maintain refrigerated at 2-8°C for up to 2 weeks. For long term storage store at -20°C in small aliquots to prevent freeze-thaw cycles.

**Precautions**

GATA3 Antibody (Center) is for research use only and not for use in diagnostic or therapeutic procedures.

**GATA3 Antibody (Center) - Protein Information**

**Name** GATA3

**Function** Transcriptional activator which binds to the enhancer of the T-cell receptor alpha and

delta genes. Binds to the consensus sequence 5'-AGATAG-3'. Required for the T-helper 2 (Th2) differentiation process following immune and inflammatory responses. Positively regulates ASB2 expression (By similarity). Coordinates macrophage transcriptional activation and UCP2-dependent metabolic reprogramming in response to IL33. Upon tissue injury, acts downstream of IL33 signaling to drive differentiation of inflammation-resolving alternatively activated macrophages.

**Cellular Location**

Nucleus.

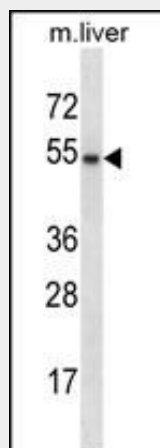
**Tissue Location**

T-cells and endothelial cells.

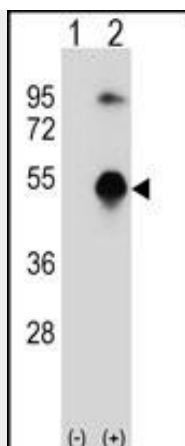
**GATA3 Antibody (Center) - Protocols**

Provided below are standard protocols that you may find useful for product applications.

- [Western Blot](#)
- [Blocking Peptides](#)
- [Dot Blot](#)
- [Immunohistochemistry](#)
- [Immunofluorescence](#)
- [Immunoprecipitation](#)
- [Flow Cytometry](#)
- [Cell Culture](#)

**GATA3 Antibody (Center) - Images**

GATA3 Antibody (Center) (Cat. #AP16085c) western blot analysis in mouse liver tissue lysates (35ug/lane). This demonstrates the GATA3 antibody detected the GATA3 protein (arrow).



Western blot analysis of GATA3 (arrow) using rabbit polyclonal GATA3 Antibody (Center) (Cat. #AP16085c). 293 cell lysates (2 ug/lane) either nontransfected (Lane 1) or transiently transfected (Lane 2) with the GATA3 gene.

### **GATA3 Antibody (Center) - Background**

This gene encodes a protein which belongs to the GATA family of transcription factors. The protein contains two GATA-type zinc fingers and is an important regulator of T-cell development and plays an important role in endothelial cell biology. Defects in this gene are the cause of hypoparathyroidism with sensorineural deafness and renal dysplasia.

### **GATA3 Antibody (Center) - References**

Cook, K.D., et al. J. Immunol. 185(6):3209-3216(2010)  
Schuurhof, A., et al. Pediatr. Pulmonol. 45(6):608-613(2010)  
Kemp, K.L., et al. J. Immunol. 184(8):4178-4184(2010)  
Davila, S., et al. Genes Immun. 11(3):232-238(2010)  
Yao, X., et al. Chin. Med. J. 123(6):739-744(2010)