

TSLP Antibody (C-term)
Affinity Purified Rabbit Polyclonal Antibody (Pab)
Catalog # AP16103b**Specification**

TSLP Antibody (C-term) - Product Information

Application	WB,E
Primary Accession	O969D9
Other Accession	NP_149024.1
Reactivity	Human
Host	Rabbit
Clonality	Polyclonal
Isotype	Rabbit IgG
Calculated MW	18141
Antigen Region	101-130

TSLP Antibody (C-term) - Additional Information**Gene ID** 85480**Other Names**

Thymic stromal lymphopoietin, TSLP

Target/Specificity

This TSLP antibody is generated from rabbits immunized with a KLH conjugated synthetic peptide between 101-130 amino acids from the C-terminal region of human TSLP.

Dilution

WB~~1:1000

Format

Purified polyclonal antibody supplied in PBS with 0.09% (W/V) sodium azide. This antibody is purified through a protein A column, followed by peptide affinity purification.

Storage

Maintain refrigerated at 2-8°C for up to 2 weeks. For long term storage store at -20°C in small aliquots to prevent freeze-thaw cycles.

Precautions

TSLP Antibody (C-term) is for research use only and not for use in diagnostic or therapeutic procedures.

TSLP Antibody (C-term) - Protein Information**Name** TSLP

Function [Isoform 1]: Cytokine that induces the release of T-cell- attracting chemokines from monocytes and, in particular, enhances the maturation of CD11c(+) dendritic cells. Can induce

allergic inflammation by directly activating mast cells.

Cellular Location

Secreted.

Tissue Location

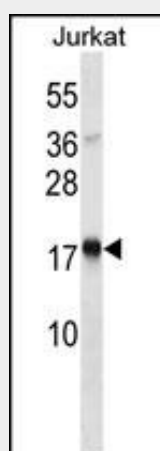
Isoform 1 is expressed in a number of tissues including heart, liver and prostate. Isoform 2 is the predominant form in keratinocytes of oral mucosa, skin and in salivary glands. It is secreted into saliva.

TSLP Antibody (C-term) - Protocols

Provided below are standard protocols that you may find useful for product applications.

- [Western Blot](#)
- [Blocking Peptides](#)
- [Dot Blot](#)
- [Immunohistochemistry](#)
- [Immunofluorescence](#)
- [Immunoprecipitation](#)
- [Flow Cytometry](#)
- [Cell Culture](#)

TSLP Antibody (C-term) - Images



TSLP Antibody (C-term) (Cat. #AP16103b) western blot analysis in Jurkat cell line lysates (35ug/lane). This demonstrates the TSLP antibody detected the TSLP protein (arrow).

TSLP Antibody (C-term) - Background

This gene encodes a hemopoietic cytokine proposed to signal through a heterodimeric receptor complex composed of the thymic stromal lymphopoietin receptor and the IL-7R alpha chain. It mainly impacts myeloid cells and induces the release of T cell-attracting chemokines from monocytes and enhances the maturation of CD11c(+) dendritic cells. Alternative splicing of this gene results in two transcript variants.

TSLP Antibody (C-term) - References

Hunninghake, G.M., et al. Allergy 65(12):1566-1575(2010)
Angelova-Fischer, I., et al. J. Invest. Dermatol. 130(10):2505-2507(2010)
Smelter, D.F., et al. J. Immunol. 185(5):3035-3040(2010)
Wu, W.H., et al. J. Allergy Clin. Immunol. 126(2):290-299(2010)
Harada, M., et al. Am. J. Respir. Cell Mol. Biol. (2010) In press :