

SGCD Antibody (C-term)
Affinity Purified Rabbit Polyclonal Antibody (Pab)
Catalog # AP16115b**Specification**

SGCD Antibody (C-term) - Product Information

Application	WB,E
Primary Accession	O92629
Other Accession	NP_001121681.1 , NP_000328.2 , NP_758447.1
Reactivity	Mouse
Host	Rabbit
Clonality	Polyclonal
Isotype	Rabbit IgG
Calculated MW	32071
Antigen Region	232-261

SGCD Antibody (C-term) - Additional Information**Gene ID** 6444**Other Names**

Delta-sarcoglycan, Delta-SG, 35 kDa dystrophin-associated glycoprotein, 35DAG, SGCD

Target/Specificity

This SGCD antibody is generated from rabbits immunized with a KLH conjugated synthetic peptide between 232-261 amino acids from the C-terminal region of human SGCD.

Dilution

WB~~1:1000

Format

Purified polyclonal antibody supplied in PBS with 0.09% (W/V) sodium azide. This antibody is purified through a protein A column, followed by peptide affinity purification.

Storage

Maintain refrigerated at 2-8°C for up to 2 weeks. For long term storage store at -20°C in small aliquots to prevent freeze-thaw cycles.

Precautions

SGCD Antibody (C-term) is for research use only and not for use in diagnostic or therapeutic procedures.

SGCD Antibody (C-term) - Protein Information**Name** SGCD

Function Component of the sarcoglycan complex, a subcomplex of the dystrophin-glycoprotein complex which forms a link between the F-actin cytoskeleton and the extracellular matrix.

Cellular Location

Cell membrane, sarcolemma; Single-pass type II membrane protein. Cytoplasm, cytoskeleton

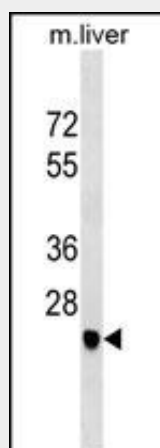
Tissue Location

Most strongly expressed in skeletal and cardiac muscle. Also detected in smooth muscle. Weak expression in brain and lung

SGCD Antibody (C-term) - Protocols

Provided below are standard protocols that you may find useful for product applications.

- [Western Blot](#)
- [Blocking Peptides](#)
- [Dot Blot](#)
- [Immunohistochemistry](#)
- [Immunofluorescence](#)
- [Immunoprecipitation](#)
- [Flow Cytometry](#)
- [Cell Culture](#)

SGCD Antibody (C-term) - Images

SGCD Antibody (C-term) (Cat. #AP16115b) western blot analysis in mouse liver tissue lysates (35ug/lane). This demonstrates the SGCD antibody detected the SGCD protein (arrow).

SGCD Antibody (C-term) - Background

The protein encoded by this gene is one of the four known components of the sarcoglycan complex, which is a subcomplex of the dystrophin-glycoprotein complex (DGC). DGC forms a link between the F-actin cytoskeleton and the extracellular matrix. This protein is expressed most abundantly in skeletal and cardiac muscle. Mutations in this gene have been associated with autosomal recessive limb-girdle muscular dystrophy and dilated cardiomyopathy. Alternatively spliced transcript variants encoding distinct isoforms have been observed for this gene.

SGCD Antibody (C-term) - References

Bailey, S.D., et al. Diabetes Care 33(10):2250-2253(2010)

Rose, J.E., et al. Mol. Med. 16 (7-8), 247-253 (2010) :
Zimmerman, R.S., et al. Genet. Med. 12(5):268-278(2010)
Ordonez-Razo, R.M., et al. Genet Test Mol Biomarkers 14(2):237-240(2010)
Lin, W.Y., et al. BMC Res Notes 3, 26 (2010) :