

NR2C1 Antibody (C-term)
Affinity Purified Rabbit Polyclonal Antibody (Pab)
Catalog # AP16146b**Specification**

NR2C1 Antibody (C-term) - Product Information

Application	WB,E
Primary Accession	P13056
Other Accession	O95K90 , A0JNE3 , NP_001027458.1 , NP_001120834.1
Reactivity	Human
Predicted	Bovine, Monkey
Host	Rabbit
Clonality	Polyclonal
Isotype	Rabbit IgG
Calculated MW	67315
Antigen Region	516-545

NR2C1 Antibody (C-term) - Additional Information**Gene ID** 7181**Other Names**

Nuclear receptor subfamily 2 group C member 1, Orphan nuclear receptor TR2, Testicular receptor 2, NR2C1, TR2

Target/Specificity

This NR2C1 antibody is generated from rabbits immunized with a KLH conjugated synthetic peptide between 516-545 amino acids from the C-terminal region of human NR2C1.

Dilution

WB~~1:1000

Format

Purified polyclonal antibody supplied in PBS with 0.09% (W/V) sodium azide. This antibody is purified through a protein A column, followed by peptide affinity purification.

Storage

Maintain refrigerated at 2-8°C for up to 2 weeks. For long term storage store at -20°C in small aliquots to prevent freeze-thaw cycles.

Precautions

NR2C1 Antibody (C-term) is for research use only and not for use in diagnostic or therapeutic procedures.

NR2C1 Antibody (C-term) - Protein Information**Name** NR2C1

Synonyms TR2

Function Orphan nuclear receptor. Binds the IR7 element in the promoter of its own gene in an autoregulatory negative feedback mechanism. Primarily repressor of a broad range of genes. Binds to hormone response elements (HREs) consisting of two 5'-AGGTCA-3' half site direct repeat consensus sequences. Together with NR2C2, forms the core of the DRED (direct repeat erythroid-definitive) complex that represses embryonic and fetal globin transcription. Also activator of OCT4 gene expression. May be involved in stem cell proliferation and differentiation. Mediator of retinoic acid-regulated preadipocyte proliferation.

Cellular Location

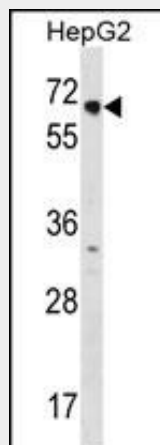
Nucleus {ECO:0000255|PROSITE-ProRule:PRU00407}. Nucleus, PML body. Note=Recruited by HDAC3, after all- trans retinoic acid stimulated MAPK1-mediated Thr-223 phosphorylation, to PML bodies for subsequent sumoylation.

NR2C1 Antibody (C-term) - Protocols

Provided below are standard protocols that you may find useful for product applications.

- [Western Blot](#)
- [Blocking Peptides](#)
- [Dot Blot](#)
- [Immunohistochemistry](#)
- [Immunofluorescence](#)
- [Immunoprecipitation](#)
- [Flow Cytometry](#)
- [Cell Culture](#)

NR2C1 Antibody (C-term) - Images



NR2C1 Antibody (C-term) (Cat. #AP16146b) western blot analysis in HepG2 cell line lysates (35ug/lane). This demonstrates the NR2C1 antibody detected the NR2C1 protein (arrow).

NR2C1 Antibody (C-term) - Background

This gene encodes a nuclear hormone receptor characterized by a highly conserved DNA binding domain (DBD), a variable hinge region, and a carboxy-terminal ligand binding domain (LBD) that is typical for all members of the steroid/thyroid hormone receptor superfamily. This protein also belongs to a large family of

ligand-inducible transcription factors that regulate gene expression by binding to specific DNA sequences within promoters of target genes. Multiple alternatively spliced transcript variants have been described, but the full-length nature of some of these variants has not been determined.

NR2C1 Antibody (C-term) - References

Rose, J.E., et al. Mol. Med. 16 (7-8), 247-253 (2010) :
Lin, Y.L., et al. Biochem. Biophys. Res. Commun. 350(2):430-436(2006)
Li, G., et al. Biochem. Biophys. Res. Commun. 310(2):384-390(2003)
Mu, X., et al. Prostate 57(2):129-133(2003)
Franco, P.J., et al. Mol. Endocrinol. 15(8):1318-1328(2001)