

**RPLP0 Antibody (N-term)**  
**Affinity Purified Rabbit Polyclonal Antibody (Pab)**  
**Catalog # AP16183a****Specification**

---

**RPLP0 Antibody (N-term) - Product Information**

Application	WB,E
Primary Accession	<a href="#">P05388</a>
Other Accession	<a href="#">P19945</a> , <a href="#">Q29214</a> , <a href="#">P14869</a> , <a href="#">Q9PV90</a> , <a href="#">Q95140</a> , <a href="#">Q8NHW5</a> , <a href="#">NP_000993.1</a> , <a href="#">NP_444505.1</a> , <a href="#">G1SPK4</a>
Reactivity	Human
Predicted	Bovine, Zebrafish, Mouse, Pig, Rabbit, Rat
Host	Rabbit
Clonality	Polyclonal
Isotype	Rabbit IgG
Calculated MW	34274
Antigen Region	1-30

**RPLP0 Antibody (N-term) - Additional Information****Gene ID** 6175**Other Names**

60S acidic ribosomal protein P0, 60S ribosomal protein L10E, RPLP0

**Target/Specificity**

This RPLP0 antibody is generated from rabbits immunized with a KLH conjugated synthetic peptide between 1-30 amino acids from the N-terminal region of human RPLP0.

**Dilution**

WB~~1:1000

**Format**

Purified polyclonal antibody supplied in PBS with 0.09% (W/V) sodium azide. This antibody is purified through a protein A column, followed by peptide affinity purification.

**Storage**

Maintain refrigerated at 2-8°C for up to 2 weeks. For long term storage store at -20°C in small aliquots to prevent freeze-thaw cycles.

**Precautions**

RPLP0 Antibody (N-term) is for research use only and not for use in diagnostic or therapeutic procedures.

**RPLP0 Antibody (N-term) - Protein Information****Name** RPLP0

**Function** Ribosomal protein P0 is the functional equivalent of E.coli protein L10.

**Cellular Location**

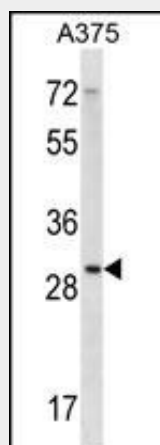
Nucleus. Cytoplasm. Note=Localized in cytoplasmic mRNP granules containing untranslated mRNAs (PubMed:19188445, PubMed:17289661).

**RPLP0 Antibody (N-term) - Protocols**

Provided below are standard protocols that you may find useful for product applications.

- [Western Blot](#)
- [Blocking Peptides](#)
- [Dot Blot](#)
- [Immunohistochemistry](#)
- [Immunofluorescence](#)
- [Immunoprecipitation](#)
- [Flow Cytometry](#)
- [Cell Culture](#)

**RPLP0 Antibody (N-term) - Images**



RPLP0 Antibody (N-term) (Cat. #AP16183a) western blot analysis in A375 cell line lysates (35ug/lane). This demonstrates the RPLP0 antibody detected the RPLP0 protein (arrow).

**RPLP0 Antibody (N-term) - Background**

Ribosomes, the organelles that catalyze protein synthesis, consist of a small 40S subunit and a large 60S subunit. Together these subunits are composed of 4 RNA species and approximately 80 structurally distinct proteins. This gene encodes a ribosomal protein that is a component of the 60S subunit. The protein, which is the functional equivalent of the E. coli L10 ribosomal protein, belongs to the L10P family of ribosomal proteins. It is a neutral phosphoprotein with a C-terminal end that is nearly identical to the C-terminal ends of the acidic ribosomal phosphoproteins P1 and P2. The P0 protein can interact with P1 and P2 to form a pentameric complex consisting of P1 and P2 dimers, and a P0 monomer. The protein is located in the cytoplasm. Transcript variants derived from alternative splicing exist; they encode the same protein. As is typical for genes encoding ribosomal proteins, there are

multiple processed pseudogenes of this gene dispersed through the genome.

#### **RPLP0 Antibody (N-term) - References**

Vascotto, C., et al. Mol. Cell. Biol. 29(7):1834-1854(2009)  
Rinne, T., et al. Hum. Mol. Genet. 17(13):1968-1977(2008)  
Chang, T.W., et al. Oncogene 27(3):332-338(2008)  
Rikova, K., et al. Cell 131(6):1190-1203(2007)  
Sugiyama, N., et al. Mol. Cell Proteomics 6(6):1103-1109(2007)