

**SLC28A2 Antibody (N-term)**  
**Affinity Purified Rabbit Polyclonal Antibody (Pab)**  
**Catalog # AP16185a****Specification**

---

**SLC28A2 Antibody (N-term) - Product Information**

Application	WB,E
Primary Accession	<a href="#">O43868</a>
Other Accession	<a href="#">NP_004203.2</a>
Reactivity	Human
Host	Rabbit
Clonality	Polyclonal
Isotype	Rabbit IgG
Calculated MW	71926
Antigen Region	14-42

**SLC28A2 Antibody (N-term) - Additional Information****Gene ID** 9153**Other Names**

Sodium/nucleoside cotransporter 2, Concentrative nucleoside transporter 2, CNT 2, hCNT2, Na(+)/nucleoside cotransporter 2, Sodium-coupled nucleoside transporter 2, Sodium/purine nucleoside co-transporter, SPNT, Solute carrier family 28 member 2, SLC28A2, CNT2

**Target/Specificity**

This SLC28A2 antibody is generated from rabbits immunized with a KLH conjugated synthetic peptide between 14-42 amino acids from the N-terminal region of human SLC28A2.

**Dilution**

WB~~1:1000

**Format**

Purified polyclonal antibody supplied in PBS with 0.09% (W/V) sodium azide. This antibody is purified through a protein A column, followed by peptide affinity purification.

**Storage**

Maintain refrigerated at 2-8°C for up to 2 weeks. For long term storage store at -20°C in small aliquots to prevent freeze-thaw cycles.

**Precautions**

SLC28A2 Antibody (N-term) is for research use only and not for use in diagnostic or therapeutic procedures.

**SLC28A2 Antibody (N-term) - Protein Information****Name** SLC28A2

## Synonyms CNT2

**Function** Sodium-dependent and purine-selective transporter (PubMed:[9435697](#), PubMed:[10087507](#)). Exhibits the transport characteristics of the nucleoside transport system cif or N1 subtype (N1/cif) (selective for purine nucleosides and uridine) (PubMed:[9435697](#), PubMed:[10087507](#), PubMed:[21795683](#)). Plays a critical role in specific uptake and salvage of purine nucleosides in kidney and other tissues (PubMed:[9435697](#)). May contribute to regulate the transport of organic compounds in testes across the blood-testis- barrier (Probable).

## Cellular Location

Membrane; Multi-pass membrane protein. Apicolateral cell membrane; Multi-pass membrane protein. Note=Localized to the apicolateral membranes of Sertoli cells and vascular endothelial cells in testis

## Tissue Location

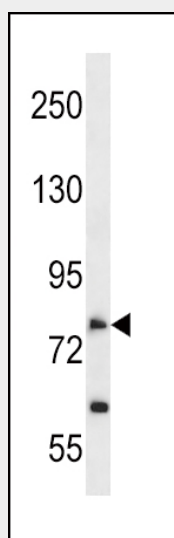
Expressed in heart and skeletal muscle followed by liver, kidney, intestine, pancreas, placenta and brain (PubMed:9435697). Weak expression in lung (PubMed:9435697). In testis, primarily localized to the apicolateral membranes of Sertoli cells and vascular endothelial cells, and weakly expressed in Leydig cells, peritubular myoid cells and germ cells (PubMed:35307651)

## SLC28A2 Antibody (N-term) - Protocols

Provided below are standard protocols that you may find useful for product applications.

- [Western Blot](#)
- [Blocking Peptides](#)
- [Dot Blot](#)
- [Immunohistochemistry](#)
- [Immunofluorescence](#)
- [Immunoprecipitation](#)
- [Flow Cytometry](#)
- [Cell Culture](#)

## SLC28A2 Antibody (N-term) - Images



SLC28A2 Antibody (N-term) (Cat. #AP16185a) western blot analysis in A549 cell line lysates (35ug/lane). This demonstrates the SLC28A2 antibody detected the SLC28A2 protein (arrow).

**SLC28A2 Antibody (N-term) - Background**

Sodium-dependent and purine-selective transporter. Exhibits the transport characteristics of the nucleoside transport system cif or N1 subtype (N1/cif) (selective for purine nucleosides and uridine). Plays a critical role in specific uptake and salvage of purine nucleosides in kidney and other tissues.