

C1RL Antibody (Center)
Affinity Purified Rabbit Polyclonal Antibody (Pab)
Catalog # AP16193c**Specification**

C1RL Antibody (Center) - Product Information

Application	WB,E
Primary Accession	O9NZP8
Other Accession	NP_057630.2
Reactivity	Human
Host	Rabbit
Clonality	Polyclonal
Isotype	Rabbit IgG
Calculated MW	53498
Antigen Region	161-190

C1RL Antibody (Center) - Additional Information**Gene ID** 51279**Other Names**

Complement C1r subcomponent-like protein, C1r-LP, C1r-like protein, 3421-, C1r-like serine protease analog protein, CLSPa, C1RL, C1RL1, C1RLP, CLSPA

Target/Specificity

This C1RL antibody is generated from rabbits immunized with a KLH conjugated synthetic peptide between 161-190 amino acids from the Central region of human C1RL.

Dilution

WB~~1:1000

Format

Purified polyclonal antibody supplied in PBS with 0.09% (W/V) sodium azide. This antibody is purified through a protein A column, followed by peptide affinity purification.

Storage

Maintain refrigerated at 2-8°C for up to 2 weeks. For long term storage store at -20°C in small aliquots to prevent freeze-thaw cycles.

Precautions

C1RL Antibody (Center) is for research use only and not for use in diagnostic or therapeutic procedures.

C1RL Antibody (Center) - Protein Information**Name** C1RL**Synonyms** C1RL1, C1RLP, CLSPA

Function Mediates the proteolytic cleavage of HP/haptoglobin in the endoplasmic reticulum.

Cellular Location

Secreted.

Tissue Location

Highly expressed in placenta, liver, kidney, pancreas, moderately in lung, spleen, prostate, ovary, colon, and PBL, and weakly in heart, skeletal muscle, thymus, testis, and small intestine.

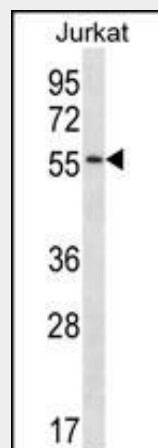
Expressed in PC-3 (prostate adenocarcinoma) and SK-OV-3 (ovary adenocarcinoma) cells, but not in LoVo and HT-29 (colon adenocarcinoma), SMMC7721 (hepatocellular carcinoma), CaoV-3 (ovary adenocarcinoma), HeLa (cervix epithelioid carcinoma), MCF-7 (breast adenocarcinoma), U-251MG (glioma) or A-549 (lung carcinoma) cells. Widely expressed in myeloid leukemia cell lines, including K-562 (chronic myelogenous leukemia), THP-1 (myelomonocytic leukemia), HL-60 and NB4 (promyelocytic leukemia), and KG-1 (acute myelogenous leukemia) cells. Expressed mainly in the liver and in serum (at protein level)

C1RL Antibody (Center) - Protocols

Provided below are standard protocols that you may find useful for product applications.

- [Western Blot](#)
- [Blocking Peptides](#)
- [Dot Blot](#)
- [Immunohistochemistry](#)
- [Immunofluorescence](#)
- [Immunoprecipitation](#)
- [Flow Cytometry](#)
- [Cell Culture](#)

C1RL Antibody (Center) - Images



C1RL Antibody (Center) (Cat. #AP16193c) western blot analysis in Jurkat cell line lysates (35ug/lane). This demonstrates the C1RL antibody detected the C1RL protein (arrow).

C1RL Antibody (Center) - Background

C1RL mediates the proteolytic cleavage of HP/haptoglobin in the endoplasmic reticulum.