

**SFRS8 Antibody (N-term)**  
**Affinity Purified Rabbit Polyclonal Antibody (Pab)**  
**Catalog # AP16220a****Specification**

---

**SFRS8 Antibody (N-term) - Product Information**

Application	WB,E
Primary Accession	<a href="#">Q12872</a>
Other Accession	<a href="#">NP_004583.2</a>
Reactivity	Human
Host	Rabbit
Clonality	Polyclonal
Isotype	Rabbit IgG
Calculated MW	104822
Antigen Region	1-30

**SFRS8 Antibody (N-term) - Additional Information****Gene ID** 6433**Other Names**

Splicing factor, suppressor of white-apricot homolog, Splicing factor, arginine/serine-rich 8, Suppressor of white apricot protein homolog, SFSWAP, SFRS8, SWAP

**Target/Specificity**

This SFRS8 antibody is generated from rabbits immunized with a KLH conjugated synthetic peptide between 1-30 amino acids from the N-terminal region of human SFRS8.

**Dilution**

WB~~1:1000

**Format**

Purified polyclonal antibody supplied in PBS with 0.09% (W/V) sodium azide. This antibody is purified through a protein A column, followed by peptide affinity purification.

**Storage**

Maintain refrigerated at 2-8°C for up to 2 weeks. For long term storage store at -20°C in small aliquots to prevent freeze-thaw cycles.

**Precautions**

SFRS8 Antibody (N-term) is for research use only and not for use in diagnostic or therapeutic procedures.

**SFRS8 Antibody (N-term) - Protein Information****Name** SFSWAP**Synonyms** SFRS8, SWAP

**Function** Plays a role as an alternative splicing regulator. Regulate its own expression at the level of RNA processing. Also regulates the splicing of fibronectin and CD45 genes. May act, at least in part, by interaction with other R/S-containing splicing factors. Represses the splicing of MAPT/Tau exon 10.

**Cellular Location**

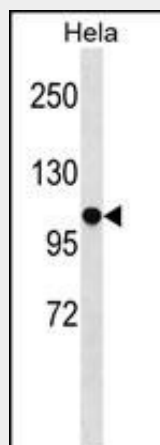
Nucleus.

**SFRS8 Antibody (N-term) - Protocols**

Provided below are standard protocols that you may find useful for product applications.

- [Western Blot](#)
- [Blocking Peptides](#)
- [Dot Blot](#)
- [Immunohistochemistry](#)
- [Immunofluorescence](#)
- [Immunoprecipitation](#)
- [Flow Cytometry](#)
- [Cell Culture](#)

**SFRS8 Antibody (N-term) - Images**



SFRS8 Antibody (N-term) (Cat. #AP16220a) western blot analysis in HeLa cell line lysates (35ug/lane). This demonstrates the SFRS8 antibody detected the SFRS8 protein (arrow).

**SFRS8 Antibody (N-term) - Background**

This gene encodes a human homolog of Drosophila splicing regulatory protein. This gene autoregulates its expression by control of splicing of its first two introns. In addition, it also regulates the splicing of fibronectin and CD45 genes.

**SFRS8 Antibody (N-term) - References**

Rose, J.E., et al. Mol. Med. 16 (7-8), 247-253 (2010) :  
Matsuoka, S., et al. Science 316(5828):1160-1166(2007)  
Ewing, R.M., et al. Mol. Syst. Biol. 3, 89 (2007) :  
Olsen, J.V., et al. Cell 127(3):635-648(2006)  
Olsen, J.V., et al. Cell 127(3):635-648(2006)