

SIGLEC5 Antibody (C-term)
Purified Rabbit Polyclonal Antibody (Pab)
Catalog # AP1623b**Specification**

SIGLEC5 Antibody (C-term) - Product Information

Application	WB,E
Primary Accession	O15389
Reactivity	Human, Mouse
Host	Rabbit
Clonality	Polyclonal
Isotype	Rabbit IgG
Calculated MW	60715
Antigen Region	482-513

SIGLEC5 Antibody (C-term) - Additional Information**Gene ID** 8778**Other Names**

Sialic acid-binding Ig-like lectin 5, Siglec-5, CD33 antigen-like 2, Obesity-binding protein 2, OB-BP2, OB-binding protein 2, CD170, SIGLEC5, CD33L2, OBBP2

Target/Specificity

This SIGLEC5 antibody is generated from rabbits immunized with a KLH conjugated synthetic peptide between 482-513 amino acids from the C-terminal region of human SIGLEC5.

Dilution

WB~~1:1000

Format

Purified polyclonal antibody supplied in PBS with 0.09% (W/V) sodium azide. This antibody is purified through a protein A column, followed by peptide affinity purification.

Storage

Maintain refrigerated at 2-8°C for up to 2 weeks. For long term storage store at -20°C in small aliquots to prevent freeze-thaw cycles.

Precautions

SIGLEC5 Antibody (C-term) is for research use only and not for use in diagnostic or therapeutic procedures.

SIGLEC5 Antibody (C-term) - Protein Information**Name** SIGLEC5**Synonyms** CD33L2, OBBP2

Function Putative adhesion molecule that mediates sialic-acid dependent binding to cells. Binds equally to alpha-2,3-linked and alpha-2,6-linked sialic acid. The sialic acid recognition site may be masked by cis interactions with sialic acids on the same cell surface.

Cellular Location

Membrane; Single-pass type I membrane protein.

Tissue Location

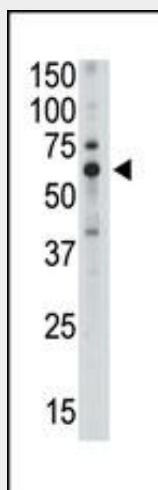
Expressed by monocytic/myeloid lineage cells. Found at high levels in peripheral blood leukocytes, spleen, bone marrow and at lower levels in lymph node, lung, appendix, placenta, pancreas and thymus. Expressed by monocytes and neutrophils but absent from leukemic cell lines representing early stages of myelomonocytic differentiation

SIGLEC5 Antibody (C-term) - Protocols

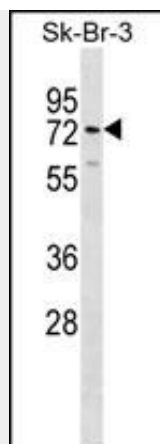
Provided below are standard protocols that you may find useful for product applications.

- [Western Blot](#)
- [Blocking Peptides](#)
- [Dot Blot](#)
- [Immunohistochemistry](#)
- [Immunofluorescence](#)
- [Immunoprecipitation](#)
- [Flow Cytometry](#)
- [Cell Culture](#)

SIGLEC5 Antibody (C-term) - Images



The anti-Siglec5 C-term Pab (Cat. #AP1623b) is used in Western blot to detect Siglec5 in mouse liver tissue lysate.



SIGLEC5 Antibody (Cat. #AP1623b) western blot analysis in SK-BR-3 cell line lysates (35ug/lane). This demonstrates the SIGLEC5 antibody detected the SIGLEC5 protein (arrow).

SIGLEC5 Antibody (C-term) - Background

SIGLECs are members of the immunoglobulin superfamily that are expressed on the cell surface. Most SIGLECs have one or more cytoplasmic immune receptor tyrosine-based inhibitory motifs (ITIM). SIGLECs are typically expressed on cells of the innate immune system, with the exception of the B-cell expressed SIGLEC6. Sequence analysis predicted that the 697-amino acid SIGLEC10 protein contains a signal peptide, an N-terminal V-set Ig-like domain and four C2-set Ig-like domains, five potential N-linked glycosylation sites, a transmembrane region, and a 126-residue cytoplasmic tail with 3 putative ITIMs. Northern blot analysis detected a major 3.0-kb SIGLEC10 transcript, with highest levels in spleen, lymph node, blood leukocytes, and appendix. Little or no expression was observed in pancreas, thyroid, and testis. Flow cytometric analysis demonstrated eosinophil-specific expression of SIGLEC10, but at a lower level than that of SIGLEC8. Expression was also detected on monocytes and a CD16-positive/CD56-negative natural killer-like lymphocyte population. After sialidase treatment, which is necessary for unmasking the sialic acid-binding site on SIGLECs interacting with cell surface sialic acids, cells expressing SIGLEC10 bound to red blood cells. Immunoprecipitation analysis indicated expression of a 100- to 120-kD monomeric protein, higher than the predicted molecular mass, suggesting that SIGLEC10 is glycosylated.

SIGLEC5 Antibody (C-term) - References

- Erickson-Miller, C.L., et al., Exp. Hematol. 31(5):382-388 (2003).
- Patel, N., et al., J. Biol. Chem. 274(32):22729-22738 (1999).
- Cornish, A.L., et al., Blood 92(6):2123-2132 (1998).
- Kim, H.S., Cytogenet. Cell Genet. 84 (1-2), 96 (1999).