

SYNGR1 Antibody (C-term)
Affinity Purified Rabbit Polyclonal Antibody (Pab)
Catalog # AP16240B**Specification**

SYNGR1 Antibody (C-term) - Product Information

Application	WB,E
Primary Accession	O43759
Other Accession	NP_663783.1 , NP_004702.2
Reactivity	Human
Host	Rabbit
Clonality	Polyclonal
Isotype	Rabbit IgG
Calculated MW	25456
Antigen Region	154-183

SYNGR1 Antibody (C-term) - Additional Information**Gene ID** 9145**Other Names**

Synaptogyrin-1, SYNGR1

Target/Specificity

This SYNGR1 antibody is generated from rabbits immunized with a KLH conjugated synthetic peptide between 154-183 amino acids from the C-terminal region of human SYNGR1.

Dilution

WB~~1:1000

Format

Purified polyclonal antibody supplied in PBS with 0.09% (W/V) sodium azide. This antibody is purified through a protein A column, followed by peptide affinity purification.

Storage

Maintain refrigerated at 2-8°C for up to 2 weeks. For long term storage store at -20°C in small aliquots to prevent freeze-thaw cycles.

Precautions

SYNGR1 Antibody (C-term) is for research use only and not for use in diagnostic or therapeutic procedures.

SYNGR1 Antibody (C-term) - Protein Information**Name** SYNGR1 ([HGNC:11498](#))

Function May play a role in regulated exocytosis. Modulates the localization of synaptophysin/SYP into synaptic-like microvesicles and may therefore play a role in synaptic-like microvesicle

formation and/or maturation (By similarity). Involved in the regulation of short- term and long-term synaptic plasticity (By similarity).

Cellular Location

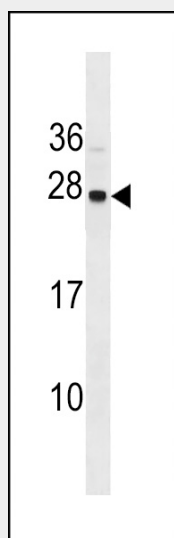
Cytoplasmic vesicle, secretory vesicle, synaptic vesicle membrane
{ECO:0000250|UniProtKB:Q62876}; Multi-pass membrane protein
{ECO:0000250|UniProtKB:Q62876}. Melanosome. Note=Identified by mass spectrometry in melanosome fractions from stage I to stage IV

SYNGR1 Antibody (C-term) - Protocols

Provided below are standard protocols that you may find useful for product applications.

- [Western Blot](#)
- [Blocking Peptides](#)
- [Dot Blot](#)
- [Immunohistochemistry](#)
- [Immunofluorescence](#)
- [Immunoprecipitation](#)
- [Flow Cytometry](#)
- [Cell Culture](#)

SYNGR1 Antibody (C-term) - Images



SYNGR1 Antibody (C-term) (Cat. #AP16240b) western blot analysis in MDA-MB453 cell line lysates (35ug/lane). This demonstrates the SYNGR1 antibody detected the SYNGR1 protein (arrow).

SYNGR1 Antibody (C-term) - Background

SYNGR1 is an integral membrane protein associated with presynaptic vesicles in neuronal cells. The exact function of this protein is unclear, but studies of a similar murine protein suggest that it functions in synaptic plasticity without being required for synaptic transmission. The gene product belongs to the synaptogyrin gene family.

SYNGR1 Antibody (C-term) - References

Iatropoulos, P., et al. Psychiatr. Genet. 19(5):237-243(2009)
Wang, Y., et al. Psychiatry Res 169(2):167-168(2009)
Cheng, M.C., et al. J Psychiatr Res 41(12):1027-1031(2007)
Chi, A., et al. J. Proteome Res. 5(11):3135-3144(2006)
Verma, R., et al. J. Hum. Genet. 50(12):635-640(2005)