

**SNTB2 Antibody (Center)**  
**Affinity Purified Rabbit Polyclonal Antibody (Pab)**  
**Catalog # AP16247C**

**Specification**

---

**SNTB2 Antibody (Center) - Product Information**

Application	WB,E
Primary Accession	<a href="#">Q13425</a>
Other Accession	<a href="#">NP_006741.1</a>
Reactivity	Human
Host	Rabbit
Clonality	Polyclonal
Isotype	Rabbit IgG
Calculated MW	57950
Antigen Region	217-245

**SNTB2 Antibody (Center) - Additional Information**

**Gene ID** 6645

**Other Names**

Beta-2-syntrophin, 59 kDa dystrophin-associated protein A1 basic component 2, Syntrophin-3, SNT3, Syntrophin-like, SNTL, SNTB2, D16S2531E, SNT2B2, SNTL

**Target/Specificity**

This SNTB2 antibody is generated from rabbits immunized with a KLH conjugated synthetic peptide between 217-245 amino acids from the Central region of human SNTB2.

**Dilution**

WB~~1:1000

**Format**

Purified polyclonal antibody supplied in PBS with 0.09% (W/V) sodium azide. This antibody is purified through a protein A column, followed by peptide affinity purification.

**Storage**

Maintain refrigerated at 2-8°C for up to 2 weeks. For long term storage store at -20°C in small aliquots to prevent freeze-thaw cycles.

**Precautions**

SNTB2 Antibody (Center) is for research use only and not for use in diagnostic or therapeutic procedures.

**SNTB2 Antibody (Center) - Protein Information**

**Name** SNTB2

**Synonyms** D16S2531E, SNT2B2, SNTL

**Function** Adapter protein that binds to and probably organizes the subcellular localization of a variety of membrane proteins. May link various receptors to the actin cytoskeleton and the dystrophin glycoprotein complex. May play a role in the regulation of secretory granules via its interaction with PTPRN.

#### **Cellular Location**

Membrane. Cytoplasmic vesicle, secretory vesicle membrane; Peripheral membrane protein. Cell junction Cytoplasm, cytoskeleton. Note=Membrane-associated. In muscle, it is exclusively localized at the neuromuscular junction (By similarity). In insulinoma cell line, it is enriched in secretory granules

#### **Tissue Location**

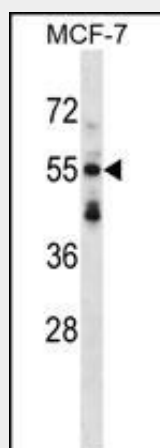
Ubiquitous. Isoform 1 is the predominant isoform. Weak level of isoform 2 is present in all tested tissues, except in liver and heart where it is highly expressed

### **SNTB2 Antibody (Center) - Protocols**

Provided below are standard protocols that you may find useful for product applications.

- [Western Blot](#)
- [Blocking Peptides](#)
- [Dot Blot](#)
- [Immunohistochemistry](#)
- [Immunofluorescence](#)
- [Immunoprecipitation](#)
- [Flow Cytometry](#)
- [Cell Culture](#)

### **SNTB2 Antibody (Center) - Images**



SNTB2 Antibody (Center) (Cat. #AP16247c) western blot analysis in MCF-7 cell line lysates (35ug/lane). This demonstrates the SNTB2 antibody detected the SNTB2 protein (arrow).

### **SNTB2 Antibody (Center) - Background**

Dystrophin is a large, rod-like cytoskeletal protein found at the inner surface of muscle fibers. Dystrophin is missing in Duchenne Muscular Dystrophy patients and is present in reduced amounts in Becker Muscular Dystrophy patients. The protein encoded by this gene is a peripheral membrane protein found associated with

dystrophin and dystrophin-related proteins. This gene is a member of the syntrophin gene family, which contains at least two other structurally-related genes.

#### **SNTB2 Antibody (Center) - References**

Costantini, J.L., et al. Blood 114(21):4703-4712(2009)  
Sugiyama, N., et al. Mol. Cell Proteomics 6(6):1103-1109(2007)  
Olsen, J.V., et al. Cell 127(3):635-648(2006)  
Olsen, J.V., et al. Cell 127(3):635-648(2006)  
Beausoleil, S.A., et al. Nat. Biotechnol. 24(10):1285-1292(2006)