

**SIGLEC8 Antibody (C-term)**  
**Purified Rabbit Polyclonal Antibody (Pab)**  
**Catalog # AP1626b****Specification**

---

**SIGLEC8 Antibody (C-term) - Product Information**

Application	WB, IHC-P,E
Primary Accession	<a href="#">Q9NYZ4</a>
Reactivity	Human, Mouse
Host	Rabbit
Clonality	Polyclonal
Isotype	Rabbit IgG
Calculated MW	54042
Antigen Region	373-406

**SIGLEC8 Antibody (C-term) - Additional Information****Gene ID** 27181**Other Names**

Sialic acid-binding Ig-like lectin 8, Siglec-8, Sialoadhesin family member 2, SAF-2, SIGLEC8, SAF2

**Target/Specificity**

This SIGLEC8 antibody is generated from rabbits immunized with a KLH conjugated synthetic peptide between 373-406 amino acids from the C-terminal region of human SIGLEC8.

**Dilution**WB~~1:1000  
IHC-P~~1:50~100**Format**

Purified polyclonal antibody supplied in PBS with 0.09% (W/V) sodium azide. This antibody is prepared by Saturated Ammonium Sulfate (SAS) precipitation followed by dialysis against PBS.

**Storage**

Maintain refrigerated at 2-8°C for up to 2 weeks. For long term storage store at -20°C in small aliquots to prevent freeze-thaw cycles.

**Precautions**

SIGLEC8 Antibody (C-term) is for research use only and not for use in diagnostic or therapeutic procedures.

**SIGLEC8 Antibody (C-term) - Protein Information****Name** SIGLEC8**Synonyms** SAF2

**Function** Putative adhesion molecule that mediates sialic-acid dependent binding to red blood cells (PubMed:[10856141](#), PubMed:[10625619](#)). Preferentially binds to alpha-2,3-linked sialic acid. Also binds to alpha-2,6-linked sialic acid. The sialic acid recognition site may be masked by cis interactions with sialic acids on the same cell surface (PubMed:[10625619](#)). Recognizes simultaneously epitopes having a terminal N-acetylneuraminic acid (sialic acid) and an underlying 6-O-sulfated galactose. Preferentially binds to Gal-6- sulfated sialyl-Lewis X glycan epitopes (PubMed:[27357658](#)).

**Cellular Location**

Membrane; Single-pass type I membrane protein.

**Tissue Location**

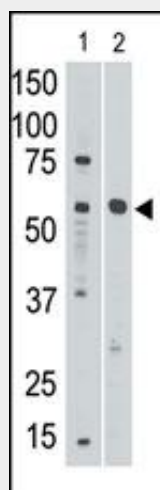
Expressed specifically on red blood cells namely basophil, mast cells and eosinophils.

**SIGLEC8 Antibody (C-term) - Protocols**

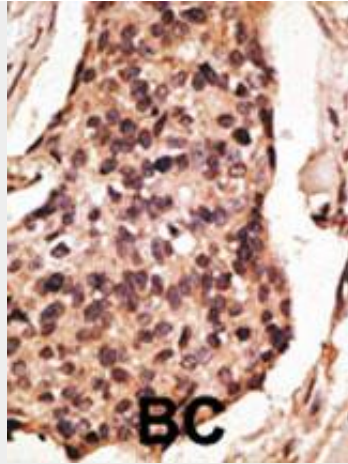
Provided below are standard protocols that you may find useful for product applications.

- [Western Blot](#)
- [Blocking Peptides](#)
- [Dot Blot](#)
- [Immunohistochemistry](#)
- [Immunofluorescence](#)
- [Immunoprecipitation](#)
- [Flow Cytometry](#)
- [Cell Culture](#)

**SIGLEC8 Antibody (C-term) - Images**



The anti-Siglec8 C-term Pab (Cat. #AP1626b) is used in Western blot to detect Siglec8 in mouse liver tissue lysate (lane 1) and in HL60 cell lysate (lane 2).



Formalin-fixed and paraffin-embedded human cancer tissue reacted with the primary antibody, which was peroxidase-conjugated to the secondary antibody, followed by DAB staining. This data demonstrates the use of this antibody for immunohistochemistry; clinical relevance has not been evaluated. BC = breast carcinoma; HC = hepatocarcinoma.

#### **SIGLEC8 Antibody (C-term) - Background**

SIGLEC8 is a putative adhesion molecule that mediates sialic-acid dependent binding to cells. It preferentially binds to alpha2,3-linked sialic acid, and also binds to alpha2,6-linked sialic acid. The sialic acid recognition site may be masked by cis interactions with sialic acids on the same cell surface. SIGLEC8 is expressed specifically on eosinophils. The protein contains 1 copy of a cytoplasmic motif that is referred to as the immunoreceptor tyrosine-based inhibitor motif (ITIM). This motif is involved in downmodulation of cellular responses. The phosphorylated ITIM motif binds to the SH2 domain of PTPN6/SHP-1. The SIGLEC8 gene belongs to the immunoglobulin superfamily.

#### **SIGLEC8 Antibody (C-term) - References**

- Foussias, G., et al., Biochem. Biophys. Res. Commun. 278(3):775-781 (2000).  
Floyd, H., et al., J. Biol. Chem. 275(2):861-866 (2000).  
Kikly, K.K., et al., J. Allergy Clin. Immunol. 105 (6 Pt 1), 1093-1100 (2000).