

**BNC1 Antibody (N-term)**  
**Affinity Purified Rabbit Polyclonal Antibody (Pab)**  
**Catalog # AP16281a****Specification**

---

**BNC1 Antibody (N-term) - Product Information**

Application	WB,E
Primary Accession	<a href="#">Q01954</a>
Other Accession	<a href="#">NP_001708.3</a>
Reactivity	Human
Host	Rabbit
Clonality	Polyclonal
Isotype	Rabbit IgG
Calculated MW	110972
Antigen Region	1-30

**BNC1 Antibody (N-term) - Additional Information****Gene ID** 646**Other Names**

Zinc finger protein basoonuclin-1, BNC1, BNC

**Target/Specificity**

This BNC1 antibody is generated from rabbits immunized with a KLH conjugated synthetic peptide between 1-30 amino acids from the N-terminal region of human BNC1.

**Dilution**

WB~~1:1000

**Format**

Purified polyclonal antibody supplied in PBS with 0.09% (W/V) sodium azide. This antibody is purified through a protein A column, followed by peptide affinity purification.

**Storage**

Maintain refrigerated at 2-8°C for up to 2 weeks. For long term storage store at -20°C in small aliquots to prevent freeze-thaw cycles.

**Precautions**

BNC1 Antibody (N-term) is for research use only and not for use in diagnostic or therapeutic procedures.

**BNC1 Antibody (N-term) - Protein Information****Name** BNC1**Synonyms** BNC

**Function** Transcriptional activator (By similarity). It is likely involved in the regulation of keratinocytes terminal differentiation in squamous epithelia and hair follicles (PubMed:[8034748](#)). Required for the maintenance of spermatogenesis (By similarity). It is involved in the positive regulation of oocyte maturation, probably acting through the control of BMP15 levels and regulation of AKT signaling cascade (PubMed:[30010909](#)). May also play a role in the early development of embryos (By similarity).

#### Cellular Location

Nucleus. Cytoplasm Nucleus, nucleoplasm. Note=Relocates to the midpiece of the flagellum during late spermiogenesis in spermatids {ECO:0000250|UniProtKB:O35914}

#### Tissue Location

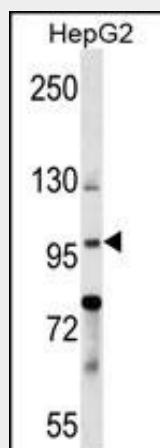
In epidermis, primarily detected in cells of the basal or immediately suprabasal layers (at protein level) (PubMed:16891417). In hair follicles, mainly expressed in the outer root sheath (at protein level) (PubMed:8034748). Expressed in epidermis, testis and foreskin, and to a lower extent in thymus, spleen, mammary glands, placenta, brain and heart (PubMed:9687312) Expressed in the ovary, notably in oocytes (PubMed:30010909)

#### BNC1 Antibody (N-term) - Protocols

Provided below are standard protocols that you may find useful for product applications.

- [Western Blot](#)
- [Blocking Peptides](#)
- [Dot Blot](#)
- [Immunohistochemistry](#)
- [Immunofluorescence](#)
- [Immunoprecipitation](#)
- [Flow Cytometry](#)
- [Cell Culture](#)

#### BNC1 Antibody (N-term) - Images



BNC1 Antibody (N-term) (Cat. #AP16281a) western blot analysis in HepG2 cell line lysates (35ug/lane). This demonstrates the BNC1 antibody detected the BNC1 protein (arrow).

#### BNC1 Antibody (N-term) - Background

The protein encoded by this gene is a zinc finger protein present in the basal cell layer of the epidermis and in hair

follicles. It is also found in abundance in the germ cells of testis and ovary. This protein is thought to play a regulatory role in keratinocyte proliferation and it may also be a regulator for rRNA transcription. This gene seems to have multiple alternatively spliced transcript variants, but their full-length nature is not known yet. There seems to be evidence of multiple polyadenylation sites for this gene.

#### **BNC1 Antibody (N-term) - References**

Vanhoutteghem, A., et al. Proc. Natl. Acad. Sci. U.S.A. 103(33):12423-12428(2006)  
Iuchi, S., et al. Exp. Dermatol. 9(3):178-184(2000)  
Tang, W., et al. Gene 237(1):35-44(1999)  
Tseng, H., et al. J. Cell. Sci. 112 PT 18, 3039-3047 (1999) :  
Iuchi, S., et al. Proc. Natl. Acad. Sci. U.S.A. 96(17):9628-9632(1999)