

PAP2D Antibody (Center)
Affinity Purified Rabbit Polyclonal Antibody (Pab)
Catalog # AP16291c

Specification

PAP2D Antibody (Center) - Product Information

Application	WB,E
Primary Accession	Q32ZL2
Other Accession	Q8BJ52 , NP_001010861.1 , NP_001032394.1
Reactivity	Human
Predicted	Mouse
Host	Rabbit
Clonality	Polyclonal
Isotype	Rabbit IgG
Calculated MW	35427
Antigen Region	78-106

PAP2D Antibody (Center) - Additional Information

Gene ID 163404

Other Names

Lipid phosphate phosphatase-related protein type 5, 313-, Phosphatidic acid phosphatase 2d, Plasticity-related gene 5 protein, PRG-5, LPPR5, PAP2D

Target/Specificity

This PAP2D antibody is generated from rabbits immunized with a KLH conjugated synthetic peptide between 78-106 amino acids from the Central region of human PAP2D.

Dilution

WB~~1:1000

Format

Purified polyclonal antibody supplied in PBS with 0.09% (W/V) sodium azide. This antibody is purified through a protein A column, followed by peptide affinity purification.

Storage

Maintain refrigerated at 2-8°C for up to 2 weeks. For long term storage store at -20°C in small aliquots to prevent freeze-thaw cycles.

Precautions

PAP2D Antibody (Center) is for research use only and not for use in diagnostic or therapeutic procedures.

PAP2D Antibody (Center) - Protein Information

Name PLPPR5 ([HGNC:31703](#))

Function Induces filopodia formation and promotes neurite growth in a CDC42-independent manner; impedes neurite growth inhibitory-mediated axonal retraction.

Cellular Location

Cell membrane {ECO:0000250|UniProtKB:Q8BJ52}; Multi-pass membrane protein

Tissue Location

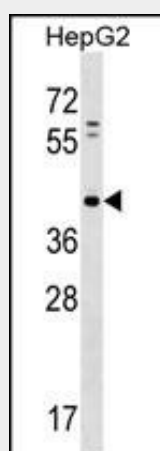
Isoform 1 is expressed in brain, lung, kidney and colon. Isoform 2 is expressed in placenta, skeletal muscle and kidney

PAP2D Antibody (Center) - Protocols

Provided below are standard protocols that you may find useful for product applications.

- [Western Blot](#)
- [Blocking Peptides](#)
- [Dot Blot](#)
- [Immunohistochemistry](#)
- [Immunofluorescence](#)
- [Immunoprecipitation](#)
- [Flow Cytometry](#)
- [Cell Culture](#)

PAP2D Antibody (Center) - Images



PAP2D Antibody (Center) (Cat. #AP16291c) western blot analysis in HepG2 cell line lysates (35ug/lane). This demonstrates the PAP2D antibody detected the PAP2D protein (arrow).

PAP2D Antibody (Center) - Background

PAP2D is a type 2 member of the phosphatidic acid phosphatase (PAP) family. All type 2 members of this protein family contain 6 transmembrane regions, and a consensus N-glycosylation site. PAPs convert phosphatidic acid to diacylglycerol, and function in de novo synthesis of glycerolipids as well as in receptor-activated signal transduction mediated by phospholipase D. Alternate transcriptional splice variants, encoding different isoforms, have been characterized. [provided by RefSeq].

PAP2D Antibody (Center) - References

Rose, J.E., et al. Mol. Med. 16 (7-8), 247-253 (2010) :
Broggini, T., et al. Mol. Biol. Cell 21(4):521-537(2010)
Sun, L., et al. Mol. Cell. Biochem. 272 (1-2), 91-96 (2005) :