

GFRA3 Antibody (Center)
Affinity Purified Rabbit Polyclonal Antibody (Pab)
Catalog # AP16331C**Specification**

GFRA3 Antibody (Center) - Product Information

Application	WB,E
Primary Accession	O60609
Other Accession	O35118 , NP_001487.2
Reactivity	Human
Predicted	Mouse
Host	Rabbit
Clonality	Polyclonal
Isotype	Rabbit IgG
Calculated MW	44511
Antigen Region	116-144

GFRA3 Antibody (Center) - Additional Information**Gene ID** 2676**Other Names**

GDNF family receptor alpha-3, GDNF receptor alpha-3, GDNFR-alpha-3, GFR-alpha-3, GFRA3

Target/Specificity

This GFRA3 antibody is generated from rabbits immunized with a KLH conjugated synthetic peptide between 116-144 amino acids from the Central region of human GFRA3.

Dilution

WB~~1:1000

Format

Purified polyclonal antibody supplied in PBS with 0.09% (W/V) sodium azide. This antibody is purified through a protein A column, followed by peptide affinity purification.

Storage

Maintain refrigerated at 2-8°C for up to 2 weeks. For long term storage store at -20°C in small aliquots to prevent freeze-thaw cycles.

Precautions

GFRA3 Antibody (Center) is for research use only and not for use in diagnostic or therapeutic procedures.

GFRA3 Antibody (Center) - Protein Information**Name** GFRA3**Function** Receptor for the glial cell line-derived neurotrophic factor, ARTN (artemin). Mediates the

artemin-induced autophosphorylation and activation of the RET receptor tyrosine kinase.

Cellular Location

Cell membrane; Lipid-anchor, GPI-anchor.

Tissue Location

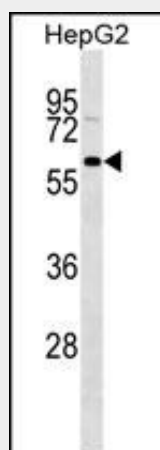
Widely expressed in adult and fetus which exhibit a similar pattern. Essentially not expressed in the central nervous system, but highly expressed in several sensory and sympathetic ganglia of the peripheral nervous system. Moderate expression in many non- neuronal tissues, particularly those of the digestive and urogenital systems, but high expression in stomach and appendix. Several types of glandular tissues show low expression. Very low or no expression detected in the hematopoietic system.

GFRA3 Antibody (Center) - Protocols

Provided below are standard protocols that you may find useful for product applications.

- [Western Blot](#)
- [Blocking Peptides](#)
- [Dot Blot](#)
- [Immunohistochemistry](#)
- [Immunofluorescence](#)
- [Immunoprecipitation](#)
- [Flow Cytometry](#)
- [Cell Culture](#)

GFRA3 Antibody (Center) - Images



GFRA3 Antibody (Center) (Cat. #AP16331c) western blot analysis in HepG2 cell line lysates (35ug/lane). This demonstrates the GFRA3 antibody detected the GFRA3 protein (arrow).

GFRA3 Antibody (Center) - Background

GFRA3 is a glycosylphosphatidylinositol(GPI)-linked cell surface receptor and a member of the GDNF receptor family. It forms a signaling receptor complex with RET tyrosine kinase receptor and binds the ligand, artemin.

GFRA3 Antibody (Center) - References

Souza, R.P., et al. J Psychiatr Res 44(11):700-706(2010)
Zhu, D.L., et al. Nan Fang Yi Ke Da Xue Xue Bao 29(3):428-432(2009)
Wang, X., et al. Structure 14(6):1083-1092(2006)
Yang, C., et al. J. Mol. Histol. 37 (1-2), 69-77 (2006) :
Zhang, Z., et al. Protein Sci. 13(10):2819-2824(2004)