

SIGLEC12 Antibody (C-term)
Purified Rabbit Polyclonal Antibody (Pab)
Catalog # AP1634b**Specification**

SIGLEC12 Antibody (C-term) - Product Information

Application	WB, IHC-P,E
Primary Accession	Q96PQ1
Reactivity	Human, Mouse
Host	Rabbit
Clonality	Polyclonal
Isotype	Rabbit IgG
Calculated MW	64984
Antigen Region	565-595

SIGLEC12 Antibody (C-term) - Additional Information**Gene ID** 89858**Other Names**

Sialic acid-binding Ig-like lectin 12, Siglec-12, Sialic acid-binding Ig-like lectin-like 1, Siglec-L1, SIGLEC12, SIGLECL1, SLG

Target/Specificity

This SIGLEC12 antibody is generated from rabbits immunized with a KLH conjugated synthetic peptide between 565-595 amino acids from the C-terminal region of human SIGLEC12.

Dilution

WB~~1:1000

IHC-P~~1:50~100

Format

Purified polyclonal antibody supplied in PBS with 0.09% (W/V) sodium azide. This antibody is prepared by Saturated Ammonium Sulfate (SAS) precipitation followed by dialysis against PBS.

Storage

Maintain refrigerated at 2-8°C for up to 2 weeks. For long term storage store at -20°C in small aliquots to prevent freeze-thaw cycles.

Precautions

SIGLEC12 Antibody (C-term) is for research use only and not for use in diagnostic or therapeutic procedures.

SIGLEC12 Antibody (C-term) - Protein Information**Name** SIGLEC12**Synonyms** SIGLECL1, SLG

Function Putative adhesion molecule that mediates sialic-acid dependent binding to cells. The sialic acid recognition site may be masked by cis interactions with sialic acids on the same cell surface.

Cellular Location

Membrane; Single-pass type I membrane protein.

Tissue Location

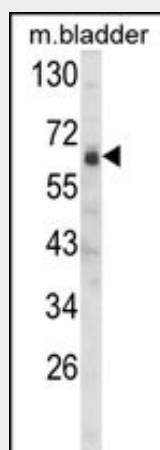
Isoform Short is highly expressed in spleen, small intestine and adrenal gland; it is lower expressed in thyroid, placenta, brain, stomach, bone marrow, spinal cord and breast. Isoform Long is highly expressed in spleen, small intestine and bone marrow; it is lower expressed in thyroid, placenta, thymus, trachea, stomach, lung, adrenal gland, fetal brain and testis

SIGLEC12 Antibody (C-term) - Protocols

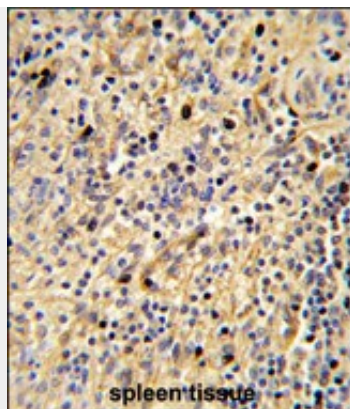
Provided below are standard protocols that you may find useful for product applications.

- [Western Blot](#)
- [Blocking Peptides](#)
- [Dot Blot](#)
- [Immunohistochemistry](#)
- [Immunofluorescence](#)
- [Immunoprecipitation](#)
- [Flow Cytometry](#)
- [Cell Culture](#)

SIGLEC12 Antibody (C-term) - Images



Western blot analysis of SIGLEC12 Antibody (C-term) (Cat. #AP1634b) in mouse bladder tissue lysates (35ug/lane). SIGLEC12 (arrow) was detected using the purified Pab.



Formalin-fixed and paraffin-embedded human spleen tissue reacted with SIGLEC12 Antibody (C-term) (Cat. #AP1634b), which was peroxidase-conjugated to the secondary antibody, followed by DAB staining. This data demonstrates the use of this antibody for immunohistochemistry; clinical relevance has not been evaluated.

SIGLEC12 Antibody (C-term) - Background

Sialic acid-binding immunoglobulin-like lectins (SIGLECs) are a family of cell surface proteins belonging to the immunoglobulin superfamily. They mediate protein-carbohydrate interactions by selectively binding to different sialic acid moieties present on glycolipids and glycoproteins. SIGLEC12 is a member of the SIGLEC3-like subfamily of SIGLECs. Members of this subfamily are characterized by an extracellular V-set immunoglobulin-like domain followed by two C2-set immunoglobulin-like domains, and the cytoplasmic tyrosine-based motifs ITIM and SLAM-like. This protein, upon tyrosine phosphorylation, has been shown to recruit the Src homology 2 domain-containing protein-tyrosine phosphatases SHP1 and SHP2. It has been suggested that the protein is involved in the negative regulation of macrophage signaling by functioning as an inhibitory receptor.

SIGLEC12 Antibody (C-term) - References

- Angata,T., J. Biol. Chem. 276 (43), 40282-40287 (2001)
Yu,Z., J. Biol. Chem. 276 (26), 23816-23824 (2001)
Foussias,G., Biochem. Biophys. Res. Commun. 284 (4), 887-899 (2001)