

**TP53BP2 Antibody (N-term)**  
**Affinity Purified Rabbit Polyclonal Antibody (Pab)**  
**Catalog # AP16353a****Specification**

---

**TP53BP2 Antibody (N-term) - Product Information**

Application	WB,E
Primary Accession	<a href="#">Q13625</a>
Other Accession	<a href="#">NP_001026855.2</a> , <a href="#">NP_005417.1</a>
Reactivity	Human
Host	Rabbit
Clonality	Polyclonal
Isotype	Rabbit IgG
Calculated MW	125616
Antigen Region	93-122

**TP53BP2 Antibody (N-term) - Additional Information****Gene ID** 7159**Other Names**

Apoptosis-stimulating of p53 protein 2, Bcl2-binding protein, Bbp, Renal carcinoma antigen NY-REN-51, Tumor suppressor p53-binding protein 2, 53BP2, p53-binding protein 2, p53BP2, TP53BP2, ASPP2, BBP

**Target/Specificity**

This TP53BP2 antibody is generated from rabbits immunized with a KLH conjugated synthetic peptide between 93-122 amino acids from the N-terminal region of human TP53BP2.

**Dilution**

WB~~1:1000

**Format**

Purified polyclonal antibody supplied in PBS with 0.09% (W/V) sodium azide. This antibody is purified through a protein A column, followed by peptide affinity purification.

**Storage**

Maintain refrigerated at 2-8°C for up to 2 weeks. For long term storage store at -20°C in small aliquots to prevent freeze-thaw cycles.

**Precautions**

TP53BP2 Antibody (N-term) is for research use only and not for use in diagnostic or therapeutic procedures.

**TP53BP2 Antibody (N-term) - Protein Information****Name** TP53BP2

**Synonyms** ASPP2, BBP

**Function** Regulator that plays a central role in regulation of apoptosis and cell growth via its interactions with proteins such as TP53 (PubMed:[12524540](#)). Regulates TP53 by enhancing the DNA binding and transactivation function of TP53 on the promoters of proapoptotic genes in vivo. Inhibits the ability of NAE1 to conjugate NEDD8 to CUL1, and thereby decreases NAE1 ability to induce apoptosis. Impedes cell cycle progression at G2/M. Its apoptosis-stimulating activity is inhibited by its interaction with DDX42.

**Cellular Location**

Cytoplasm, perinuclear region. Nucleus. Note=Predominantly found in the perinuclear region. Some small fraction is nuclear. Sequester in the cytoplasm on overexpression of DDX42

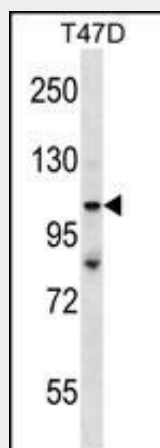
**Tissue Location**

Widely expressed. Expressed in spleen, thymus, prostate, testis, ovary, small intestine, colon and peripheral blood leukocyte. Reduced expression in breast carcinomas expressing a wild- type TP53 protein. Overexpressed in lung cancer cell lines

**TP53BP2 Antibody (N-term) - Protocols**

Provided below are standard protocols that you may find useful for product applications.

- [Western Blot](#)
- [Blocking Peptides](#)
- [Dot Blot](#)
- [Immunohistochemistry](#)
- [Immunofluorescence](#)
- [Immunoprecipitation](#)
- [Flow Cytometry](#)
- [Cell Culture](#)

**TP53BP2 Antibody (N-term) - Images**

TP53BP2 Antibody (N-term) (Cat. #AP16353a) western blot analysis in T47D cell line lysates (35ug/lane). This demonstrates the TP53BP2 antibody detected the TP53BP2 protein (arrow).

**TP53BP2 Antibody (N-term) - Background**

TP53BP2 is a member of the ASPP (apoptosis-stimulating protein of p53) family of p53 interacting

proteins. The protein contains four ankyrin repeats and an SH3 domain involved in protein-protein interactions. It is localized to the perinuclear region of the cytoplasm, and regulates apoptosis and cell growth through interactions with other regulatory molecules including members of the p53 family. Multiple transcript variants encoding different isoforms have been found for this gene.

#### **TP53BP2 Antibody (N-term) - References**

Rose, J. Phd, et al. Mol. Med. (2010) In press :  
Zhao, J., et al. Hepatology 51(1):142-153(2010)  
Hirata, H., et al. J. Urol. 182(2):721-727(2009)  
Kweekel, D.M., et al. Br. J. Cancer 101(2):357-362(2009)  
Sugiyama, N., et al. Mol. Cell Proteomics 6(6):1103-1109(2007)