

**CD226 Antibody (C-term)**  
**Affinity Purified Rabbit Polyclonal Antibody (Pab)**  
**Catalog # AP16399B****Specification**

---

**CD226 Antibody (C-term) - Product Information**

Application	WB,E
Primary Accession	<a href="#">Q15762</a>
Other Accession	<a href="#">NP_006557.2</a>
Reactivity	Human
Host	Rabbit
Clonality	Polyclonal
Isotype	Rabbit IgG
Calculated MW	38614
Antigen Region	307-335

**CD226 Antibody (C-term) - Additional Information****Gene ID** 10666**Other Names**

CD226 antigen, DNAX accessory molecule 1, DNAM-1, CD226, CD226, DNAM1

**Target/Specificity**

This CD226 antibody is generated from rabbits immunized with a KLH conjugated synthetic peptide between 307-335 amino acids from the C-terminal region of human CD226.

**Dilution**

WB~~1:1000

**Format**

Purified polyclonal antibody supplied in PBS with 0.09% (W/V) sodium azide. This antibody is purified through a protein A column, followed by peptide affinity purification.

**Storage**

Maintain refrigerated at 2-8°C for up to 2 weeks. For long term storage store at -20°C in small aliquots to prevent freeze-thaw cycles.

**Precautions**

CD226 Antibody (C-term) is for research use only and not for use in diagnostic or therapeutic procedures.

**CD226 Antibody (C-term) - Protein Information****Name** CD226**Synonyms** DNAM1

**Function** Involved in intercellular adhesion, lymphocyte signaling, cytotoxicity and lymphokine secretion mediated by cytotoxic T- lymphocyte (CTL) and NK cell (PubMed:[8673704](#)). Cell surface receptor for NECTIN2. Upon ligand binding, stimulates T-cell proliferation and cytokine production, including that of IL2, IL5, IL10, IL13, and IFNG. Competes with PVRIG for NECTIN2-binding (PubMed:[26755705](#)).

**Cellular Location**

Cell membrane; Single-pass type I membrane protein

**Tissue Location**

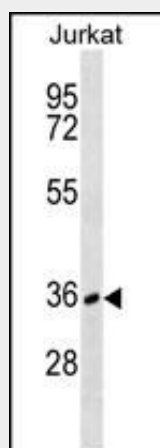
Expressed by peripheral blood T-lymphocytes.

**CD226 Antibody (C-term) - Protocols**

Provided below are standard protocols that you may find useful for product applications.

- [Western Blot](#)
- [Blocking Peptides](#)
- [Dot Blot](#)
- [Immunohistochemistry](#)
- [Immunofluorescence](#)
- [Immunoprecipitation](#)
- [Flow Cytometry](#)
- [Cell Culture](#)

**CD226 Antibody (C-term) - Images**



CD226 Antibody (C-term) (Cat. #AP16399b) western blot analysis in Jurkat cell line lysates (35ug/lane). This demonstrates the CD226 antibody detected the CD226 protein (arrow).

**CD226 Antibody (C-term) - Background**

CD226 is a glycoprotein expressed on the surface of NK cells, platelets, monocytes and a subset of T cells. It is a member of the Ig-superfamily containing 2 Ig-like domains of the V-set. The protein mediates cellular adhesion of platelets and megakaryocytic cells to vascular endothelial cells. The protein also plays a role in megakaryocytic cell maturation. [provided by RefSeq].

**CD226 Antibody (C-term) - References**

Lofgren, S.E., et al. Arthritis Rheum. 62(11):3404-3414(2010)  
Carlsten, M., et al. Leukemia 24(9):1607-1616(2010)  
Plant, D., et al. Ann. Rheum. Dis. 69(8):1548-1553(2010)  
Alcina, A., et al. Genes Immun. 11(5):439-445(2010)  
Jian, J.L., et al. J. Biol. Chem. 281(39):28731-28736(2006)