

**RPL9 Antibody (C-term)**  
**Affinity Purified Rabbit Polyclonal Antibody (Pab)**  
**Catalog # AP16409b****Specification**

---

**RPL9 Antibody (C-term) - Product Information**

Application	WB,E
Primary Accession	<a href="#">P32969</a>
Other Accession	<a href="#">P17077</a> , <a href="#">P51410</a> , <a href="#">Q5IFJ7</a> , <a href="#">Q3SYR7</a> , <a href="#">NP_000652.2</a> , <a href="#">NP_001020092.1</a> , <a href="#">G1SWI6</a>
Reactivity	Human
Predicted	Bovine, Monkey, Mouse, Rabbit, Rat
Host	Rabbit
Clonality	Polyclonal
Isotype	Rabbit IgG
Calculated MW	21863
Antigen Region	149-177

**RPL9 Antibody (C-term) - Additional Information****Gene ID** 6133**Other Names**

60S ribosomal protein L9, RPL9

**Target/Specificity**

This RPL9 antibody is generated from rabbits immunized with a KLH conjugated synthetic peptide between 149-177 amino acids from the C-terminal region of human RPL9.

**Dilution**

WB~~1:1000

**Format**

Purified polyclonal antibody supplied in PBS with 0.09% (W/V) sodium azide. This antibody is purified through a protein A column, followed by peptide affinity purification.

**Storage**

Maintain refrigerated at 2-8°C for up to 2 weeks. For long term storage store at -20°C in small aliquots to prevent freeze-thaw cycles.

**Precautions**

RPL9 Antibody (C-term) is for research use only and not for use in diagnostic or therapeutic procedures.

**RPL9 Antibody (C-term) - Protein Information****Name** RPL9

**Function** Component of the large ribosomal subunit (PubMed:[23636399](#), PubMed:[32669547](#)). The ribosome is a large ribonucleoprotein complex responsible for the synthesis of proteins in the cell (PubMed:[23636399](#), PubMed:[32669547](#)).

**Cellular Location**

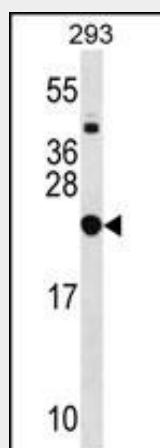
Cytoplasm.

**RPL9 Antibody (C-term) - Protocols**

Provided below are standard protocols that you may find useful for product applications.

- [Western Blot](#)
- [Blocking Peptides](#)
- [Dot Blot](#)
- [Immunohistochemistry](#)
- [Immunofluorescence](#)
- [Immunoprecipitation](#)
- [Flow Cytometry](#)
- [Cell Culture](#)

**RPL9 Antibody (C-term) - Images**



RPL9 Antibody (C-term) (Cat. #AP16409b) western blot analysis in 293 cell line lysates (35ug/lane). This demonstrates the RPL9 antibody detected the RPL9 protein (arrow).

**RPL9 Antibody (C-term) - Background**

Ribosomes, the organelles that catalyze protein synthesis, consist of a small 40S subunit and a large 60S subunit. Together these subunits are composed of 4 RNA species and approximately 80 structurally distinct proteins. This gene encodes a ribosomal protein that is a component of the 60S subunit. The protein belongs to the L6P family of ribosomal proteins. It is located in the cytoplasm. As is typical for genes encoding ribosomal proteins, there are multiple processed pseudogenes of this gene dispersed through the genome. Two alternatively spliced transcript variants encoding the same protein have been found for this gene. [provided by RefSeq].

**RPL9 Antibody (C-term) - References**

Oh, J.H., et al. Mamm. Genome 16(12):942-954(2005)  
Andersen, J.S., et al. Nature 433(7021):77-83(2005)  
Kapp, L.D., et al. Annu. Rev. Biochem. 73, 657-704 (2004) :  
Mazumder, B., et al. Cell 115(2):187-198(2003)  
Andersen, J.S., et al. Curr. Biol. 12(1):1-11(2002)